

TRUSTED SINCE 1926

BONIDE[®]



LAWNWEED BREW

Kills weeds, not lawns

**5-in-1! Controls Weeds, Disease,
Moss, Algae, & Lichens in Turf**

Works in cool weather (down to 50°F)

Provides fast green-up of turf

Ready to  spray

ACTIVE INGREDIENT:

Iron HEDTA (FeHEDTA) 26.52%

OTHER INGREDIENTS: 73.48%

TOTAL: 100.00%

EPA Est. No. 4-NY-1 EPA Reg. No. 67702-26-4

**People & Pets can
enter treated area
when spray dries**

**See results
in hours**

Keep Out Of Reach Of Children

CAUTION

(See Back Panel for Additional
Precautionary Statements)

Derived from iron (Fe)



LAWNWEED BREW Ready to Spray

- ✓ Cure your weed, moss and disease* problems fast
- ✓ Pre*- and Post-emergent activity of broadleaf weeds in one application
- ✓ See results in hours
- ✓ Rainfast in 3 hours
- ✓ Can re-seed lawn 1 day after applying
- ✓ Promotes healthy, weed- and disease*-free lawns

*** Not for use in California**

Manufactured under a license of W. Neudorff GmnHKG, Germany

EPA Reg. No. 67702-26-4 EPA Est. No. 4-NY-1

Buyers Guarantee Limited to Label Claims.

©Bonide Products, LLC All Rights Reserved

Distributed by: Bonide Products, LLC

6301 Sutliff Road, Oriskany, NY 13424



BN

DIRECTIONS FOR USE

It is a violation of Federal law to use this product in a manner inconsistent with its labeling.

Use Sites: Use to selectively control/suppress broadleaf weeds, moss, algae*, lichens*, liverworts* and diseases* growing in lawns.

*Not for use in California

Pests:

Controls or suppresses weeds such as but not limited to:

- | | |
|---|--|
| • Black medic (<i>Medicago lupulina</i>) § | • ivy (<i>Glechoma hederacea</i>)* |
| • Broadleaf plantain (<i>Plantago major</i>)* | • Dandelion (<i>Taraxicum officinale</i>) |
| • Bull thistle (<i>Cirsium vulgare</i>) | • Dovefoot geranium (<i>Geranium molle</i>)* |
| • Canada thistle (<i>Cirsium arvense</i>)* | • English daisy (<i>Bellis perennis</i>)§ |
| • Common chickweed (<i>Stellaria media</i>)§ ‡ | • False dandelion (<i>Hypochoeris radicata</i>)* |
| • Creeping buttercup (<i>Ranunculus repens</i>) | • Healall (<i>Prunella vulgaris</i>)* |
| • Creeping Charlie/Ground | • Lawn burweed (<i>Soliva ptero-sperma</i>)* |

<ul style="list-style-type: none"> • Narrow-leaved plantain (<i>Plantago lanceolata</i>)* • Oxalis (<i>Oxalis</i> spp.)* • Prostrate knotweed (<i>Polygonum aviculare</i>)* • Shepherd's-purse (<i>Capsella bursa-pastoris</i>)* • Silverweed cinquefoil (<i>Potentilla anserina</i>)* • Speedwell spp.(including Persian Speedwell (<i>Veronica persica</i>) and 	<ul style="list-style-type: none"> Slender speedwell(<i>Veronica filiformis</i>)* • White clover (<i>Trifolium repens</i>) • Wild chamomile (<i>Matricaria chamomilla</i>)* • Wild geranium (<i>Geranium robertianum</i>)* • moss, algae*, lichens*, liverworts*
---	---

Controls or suppresses diseases such as but not limited to:

- | | |
|---|--|
| <ul style="list-style-type: none"> • Dollar Spot* • Rust* | <ul style="list-style-type: none"> • Snow Mold* |
|---|--|

*Not for use in California

§ Only approved for suppression in California

‡Minimum application rate in California is 11.5 fl.oz./yd² or 9.8 ga/1000 sq.ft.

APPLICATION DIRECTIONS

Apply this 32 oz. container to 625 to 2500[†] square feet. Apply it to 1250 ft² for standard application; apply it to 625 ft² to control tough perennial weeds, such as common chickweed §, buttercup and broad-leaved plantain*. This container may be applied to up to 2500 ft^{2†} to control moss, slender speedwell*, wild geranium*, lawn diseases* (such as dollar spot, rust, and snow mold), and on weed seedlings of false dandelion*, English daisy*, dandelion* or white clover.

* Not for use in California

† Lower application rate not for use in California. Minimum application rate in California is to apply this container to 1250 ft²

§ only approved for suppression in California

Uniform coverage is important. Rinse treated areas 24 hours after application. Repeat treatment in 3 to 4 weeks for best results.

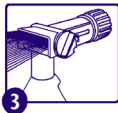
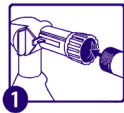
To get the most complete kill of moss, or when moss is very thick, rake out as much moss as you can using a thatching rake or lawn rake before using this product.

To improve the appearance of lawn or turf, rake out dead moss a few days after treatment.

* Not for use in California

For Pre-emergent control* of broadleaf weeds and crabgrass: Begin application when soil temperatures reach 50° to 55° F. Reapply 3 to 6 weeks later for best results.

SPRAYER DIRECTIONS



1. Attach garden hose to spray nozzle. Turn on water supply.
2. Bend safety tab down and turn control to “water”.
3. Point nozzle toward plants and turn water control knob to “On”. Product will automatically mix with water. Spray weeds thoroughly.

To Stop Spraying:

1. When you are finished spraying or if you have to stop spraying at any time, turn the knob back to the OFF position.
2. Turn off the water from the faucet.
3. Turn the knob to H₂O then OFF, to drain the water from the hose.
4. Unscrew spray nozzle from hose. Remove hose end from container.
5. Reseal the container with the child-resistant closure. Rinse the hose-end applicator

WHAT WILL I SEE?

Works quickly; dying weeds will be seen within hours of application. Treated weeds, moss, or algae* will turn brown or black. Occasionally a darkening of the grass leaf blades can occur after treatment; however, the grass will recover within a few days to weeks. May stain thatch (dead grass under lawn); this does not affect the health of the grass.

*Not for use in California

USE PRECAUTIONS

Do not apply to drought stressed grass; ensure lawn is well watered prior to application. Do not apply when the daytime temperature will exceed 85°F. Do not apply to bentgrass. If unsure of grass sensitivity, test spray a small area of your lawn. Do not apply to newly seeded areas prior to grass seed germination. Avoid spraying desirable plants. Any desirable plants or structures accidentally contacted should be rinsed with water. To avoid staining, wait until treated area dries before re-entry. Do not apply if rainfall is expected within 3 hours of application. Do not irrigate within 3 hours of application. Do not apply to the same area more than 2 time a year.

STORAGE and DISPOSAL

PESTICIDE STORAGE: Store this product in its original container and keep in a secure storage area out of reach of children and domestic animals. Store unused material, tightly closed, in original container only, away from open flame.

PESTICIDE DISPOSAL AND CONTAINER HANDLING: Non-refillable container. Do not reuse or refill this container.

If empty: Place in trash or offer for recycling if available.

If partly filled: Call your local solid waste agency for disposal instructions. Never place unused product down any indoor or outdoor drain.

FIRST AID

IF IN EYES:

- Hold eye open and rinse slowly and gently with water for 15-20 minutes.
- Remove contact lenses, if present, after the first 5 minutes then continue rinsing eye.
- Call a poison control center or doctor for treatment advice.

Have the product container or label with you when calling a poison control center or doctor, or going for treatment. Call the poison control center at 1-800-222-1222.

PRECAUTIONARY STATEMENTS
HAZARDS TO HUMANS AND DOMESTIC ANIMALS

CAUTION: Causes slight eye irritation. Avoid contact with eyes or clothing. Wash thoroughly with soap and water after handling and before eating, drinking, chewing gum, using tobacco, or using the toilet. Prolonged or frequently repeated skin contact may cause allergic reactions in some individuals.

ENVIRONMENTAL HAZARDS

To protect the environment, do not allow pesticide to enter or run off into storm drains, drainage ditches, gutters or surface waters. Applying this product in calm weather when rain is not predicted for the next 24 hours will help to ensure that wind or rain does not blow or wash pesticide off the treatment area. Rinsing application equipment over the treated area will help avoid run off to water bodies or drainage systems.

LIMITED WARRANTY AND DISCLAIMER

Seller warrants that this product conforms to the chemical description on this label and is reasonably fit for the purpose stated in the Direction for Use, subject to the inherent risks described above, when used in accordance with the Directions for Use under normal conditions. To the extent consistent with applicable law, this warranty does not extend to use of this product contrary to label directions, or under abnormal use conditions, or under conditions not reasonably foreseeable to Seller. To the extent consistent with applicable law, the Seller shall not be liable for any such use. To the extent consistent with applicable law, the Seller makes no other warranties, either expressed or implied.