



PRODUCT CATALOG PERFORMANCE COATINGS



DRIVEWAY

REFLECTIVE ROOF

ROOF & FOUNDATION

CONCRETE

BARN & FENCE PAINT

VOL. 17



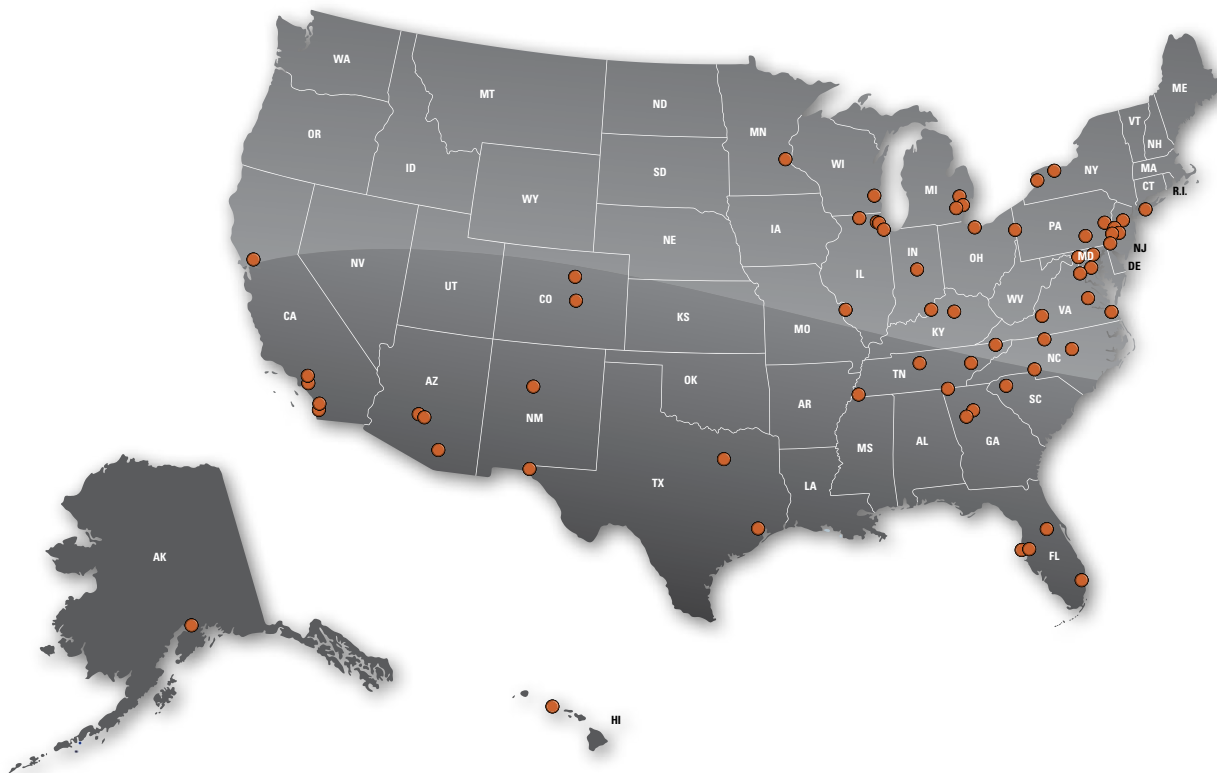
A GLOBAL LEADER...

SealBest is owned by ThorWorks Industries, an industry leader in specialty coatings and equipment.

We are the world's largest producer of pavement sealers with over 700 million gallons applied world-wide.

Our manufacturing and distribution network includes:

- 26 Manufacturing Facilities in the United States including Alaska & Hawaii.
- 36 Distribution Centers in the United States
- Over a thousand bulk distribution sites throughout the United States.
- Manufacturing facilities in Canada, Australia, Mexico & China.
- Product Distribution in over 22 countries.





We are an industry leading producer of Driveway, Roof and Foundation coatings for the DIY retail market.

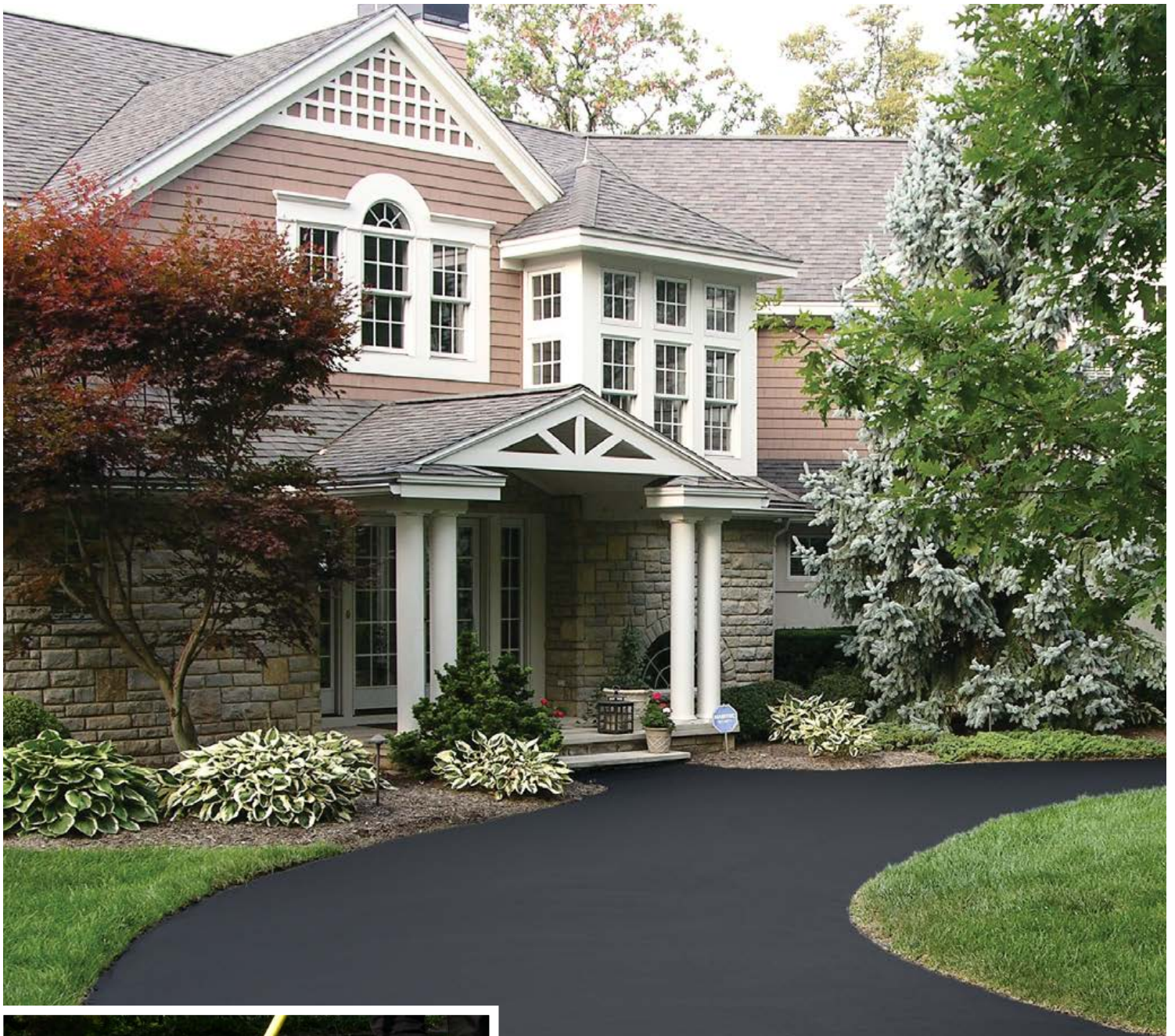
Superior product quality, award winning packaging, and unparalleled customer service have made us one of the most successful suppliers to the Home Improvement Industry.

Popular brands such as SealBest, Dry Seal, Fun Sand, Liquid Driveway, Shingle Saver, and Gray Shield are product names that are highly recognized by consumers.

With **more manufacturing locations than all competing brands combined**, along with **unmatched production capacity and logistical capabilities**, our consumer brands are poised for continued and unlimited growth in the retail sector.



SEALBEST IS THE TRUSTED NAME



DRIVEWAY COATING & REPAIR PRODUCTS





SealBest 1000

10x Heavy-Duty Advanced Acrylic Driveway Sealer & Filler

A heavy-duty advanced acrylic, fast drying asphalt emulsion based pavement sealer. Fortified with sand for added filling, durability, and traction. The E-Z Stir Gel Formula allows for easy mixing and application.

Beautifies and protects asphalt pavement surfaces including driveways, walkways & more.

Features

- 10-Year Warranty
- Beautifies & Protects Asphalt Driveways
- Dries to a Deep, Rich Black Color
- Advanced, E-Z Stir Gel Formulation for Easy Mixing & Application
- Acrylic Modified for Superior Strength & Flexibility
- Fortified with Sand for Traction & Durability
- Superior Protection from Salt & Chemicals
- The Highest Solids for Maximum Durability
- Fastest Drying - Foot Traffic in One Hour
- Dries Black

Size	Item #	Pack	Weight
4.75 Gal. Pail	H5411	1	58 lbs.

Coverage

One 4.75 gallon pail will cover approximately 250-350 square feet for one coat. A second coat may be applied for added durability. Coverage will ultimately be dependent upon pavement porosity. Extremely porous pavement may significantly reduce product coverage.



SealBest 800

8x Acrylic Polymer Modified Driveway Sealer & Filler

SealBest 800 Driveway Sealer & Filler is a high quality acrylic polymer modified, asphalt emulsion based pavement sealer. SealBest 800 is fortified with sand for added filling, durability, and traction. SealBest 800's Advanced Gel Formula allows for ease of application.

Beautifies and protects asphalt pavement surfaces including driveways, walkways & more.

Features

- 8-Year Warranty
- Beautifies & Protects Asphalt Driveways
- Dries to a Deep, Rich Black Color
- Advanced, E-Z Stir Gel Formulation for Easy Mixing & Application
- Acrylic Modified for Added Strength & Flexibility
- Fortified with Sand for Traction & Durability
- Superior Protection from Salt & Chemicals
- High Solids for Maximum Durability
- Dries Black

Size	Item #	Pack	Weight
4.75 Gal. Pail	H5065	1	57.5 lbs.



SealBest 600

Professional Grade Driveway Sealer & Filler

SealBest 600 is a Professional Grade, Polymer Modified Driveway Sealer & Filler fortified with sand for traction and durability. SealBest 600's E-Z Stir Gel Formula allows for ease of mixing and application.

Beautifies and protects asphalt pavement surfaces including driveways, walkways & more.

Features

- 6-Year Warranty
- Beautifies & Protects Asphalt Driveways
- Polymer Modified for Added Strength & Flexibility
- Fortified With Sand for Traction & Durability
- E-Z Stir Gel Formula for Easy Mixing & Application
- 6x Polymer Modification
- Dries Black

Size	Item #	Pack	Weight
4.75 Gal. Pail	H5100	1	57.5 lbs.



SealBest 400

4x Polymer Modified Driveway Sealer & Filler

SealBest 400 is a Polymer Modified Driveway Sealer & Filler fortified with sand for traction and durability. SealBest 400's E-Z Stir Formula allows for ease of mixing and application.

Beautifies and protects asphalt pavement surfaces including driveways, walkways and more.

Features

- 4-Year Warranty
- Beautifies & Protects Asphalt Driveways
- Dries to a Deep, Rich Black Color
- E-Z Stir Formula for Easy Mixing & Application
- Polymer Modified for Added Strength & Flexibility
- Fortified with Sand for Traction & Durability
- Dries Black

Size	Item #	Pack	Weight
4.75 Gal. Pail	H5200	1	55.95 lbs.



SealBest 200

2x Driveway Sealer & Filler

SealBest 200 is a Polymer Modified Driveway Sealer & Filler fortified with sand for traction and durability. SealBest 200 is ready to use and easy to apply.

Beautifies and protects asphalt pavement surfaces including driveways, walkways & more.

Features

- 2-Year Warranty
- Beautifies & Protects Asphalt Driveways
- Polymer Modified for Added Strength & Flexibility
- Ready to Use - Easy to Apply
- Fortified With Sand for Traction & Durability
- 2x Polymer Modification
- Dries Black

Size	Item #	Pack	Weight
4.75 Gal. Pail	H5300	1	55.4 lbs.



SealBest 100

Driveway Sealer

SealBest 100 Driveway Sealer contains sand for slip resistance. SealBest 100 is ready to use and easy to apply.

Beautifies and protects asphalt pavement surfaces including driveways, walkways & more.

Features

- 1-Year Warranty
- Beautifies & Protects Asphalt Driveways
- Fortified with Sand for Traction & Durability
- Dries Black

Size	Item #	Pack	Weight
4.75 Gal. Pail	H5350	1	54.6 lbs.

Coverage

One 4.75 gallon pail will cover approximately 250-350 square feet for one coat. A second coat may be applied for added durability. Coverage will ultimately be dependent upon pavement porosity. Extremely porous pavement may significantly reduce product coverage.



Professional Grade Elastomeric Pourable Crack Filler

SealBest Elastomeric Pourable Crack Filler is a professional grade flexible asphalt emulsion crack filler designed for sealing cracks up to 1/2" wide in asphalt pavement surfaces. Dries black.

Fills & Seals Cracks up to 1/2" Wide.

Features

- Fills & Seals Cracks in Asphalt Driveways
- Polymer Modified for Added Flexibility
- Seals Out Moisture
- High Solids Formula for Lasting Repair
- Dries Black

Coverage

One .9 gallon jug of SealBest Elastomeric Pourable Crack Filler will fill approximately 75-150 feet of cracks. Ultimate coverage will be dependent upon depth and width of cracks.

Size	Item #	Pack	Weight
.9 Gal. Jug	H5660	6	10.3 lbs.



Acrylic-Modified Pourable Crack Filler

SealBest Acrylic-Modified Pourable Crack Filler is an asphalt emulsion crack filler designed for sealing cracks up to 1/2" wide in asphalt pavement surfaces.

Fills & Seals Cracks Up To 1/2" Wide.

Features

- Fills & Seals Cracks in Asphalt Driveways
- Seals Out Moisture
- High Solids Formula for Lasting Repair
- Easy to Apply
- Dries Black

Coverage

One .9 gallon jug of SealBest Pourable Crack Filler will fill approximately 75-150 feet of cracks. Ultimate coverage will be dependent upon depth and width of cracks.

Size	Item #	Pack	Weight
.9 Gal. Jug	H5500	6	10.3 lbs.



Professional Grade Rubberized Trowel Grade Crack Filler

SealBest Trowel Grade Crack Filler is a professional grade quality heavy-bodied trowel grade emulsion crack filler designed for filling cracks up to 1" wide in asphalt pavement surfaces. Trowel Grade Crack Filler can also be used to fill shallow ruts and depressions in pavement surfaces. Dries Black.

Fills Cracks Up To 1" Wide.

Features

- Fills Cracks In Asphalt Driveways
- Heavy-Bodied Trowel Grade Formula
- Seals Out Moisture
- High Solids Formula For Lasting Repair
- Easy To Apply
- Dries Black

Coverage

One .9 gallon of SealBest Trowel Grade Crack Filler will fill approximately 75-150 feet of cracks. Ultimate coverage will depend upon width and depth of crack.

Size	Item #	Pack	Weight
.9 Gal. Pail	H5700	6	12.97 lbs.



Professional Grade Elastomeric Blacktop Crack Filler

A professional grade flexible asphalt emulsion crack filler designed for filling cracks up to 1" wide in asphalt (blacktop) driveways, pavements, expansion joints and foundations. Dries Black.

Asphalt (blacktop) Driveways, Expansion Joints, Below Grade Foundations.

Features

- Rubberized for added flexibility
- Fills cracks up to 1" wide in Asphalt Pavement
- Seals & Protects
- Dries Black

Coverage

Dependent upon depth and width of crack.

Size	Item #	Pack	Weight
10 Oz. Tube	H5650	12	.80 lbs.



Acrylic-Modified Blacktop Crack Filler

Asphalt emulsion crack filler designed for filling cracks in asphalt pavement. Dries Black.

Asphalt (blacktop) Driveways & Walkways.

Features

- Asphalt Emulsion Formula
- Fills & Seals Cracks in Asphalt Pavement
- Seals Out Moisture
- Dries Black

Coverage

Dependent upon depth and width of crack.

Size	Item #	Pack	Weight
10 Oz. Tube	H5550	12	.80 lbs.



Professional Grade Oil Spot Primer

SealBest Oil Spot Primer is a polymer latex emulsion designed to seal oil and gasoline stains prior to applying SealBest Driveway Sealer. Improves adhesion of driveway sealer to stained areas. Reduces the occurrence of oil bleeding through freshly applied sealer.

Seals & Primes Oil & Grease Spots on Asphalt Driveways.

Features

- Seals & Primes Oil & Grease Spots on Asphalt Driveways
- Improves Adhesion of Driveway Sealer
- Reduces Oil Spot Bleed-Through
- Latex Based Formulation
- Easy to Apply

Coverage

One .9 quart bottle will cover approximately 30-50 square feet (one coat).

Size	Item #	Pack	Weight
.9 Qt. Bottle	H5900	12	2.33 lbs.



High Performance Fast-Drying Driveway Patch

SealBest High Performance Driveway Patch is a heavy-bodied fast-drying asphalt emulsion fortified with mineral aggregate. It is designed for filling large cracks and small holes in asphalt pavement. Dries Black.

Fills and Repairs Large Cracks & Small Holes in Asphalt Pavement.

Features

- Fills And Repairs Large Cracks & Small Holes In Asphalt Pavement
- Heavy-Bodied Trowel Grade Formula
- Fast-Drying High Solids Formula
- Dries Black

Coverage

Ultimate coverage will be determined by depth and width of repair.

Size	Item #	Pack	Weight
3.5 Gal. Pail	H5810	1	53 lbs.



Pothole Patch Easy-to-apply

SealBest Pothole Patch is an All-Weather Pothole Patch designed for filling potholes and depressions in driveways, parking lots, roads, and other pavement surfaces. It can be used in both wet and dry conditions.

For Driveways, Parking Lots, Roads, & other Pavement Surfaces.

Features

- Works in Wet or Dry Conditions
- Works in Any Temperature
- Instantly Ready for Traffic
- Easy to Apply- Just Pour & Tamp
- DOT Approved

Coverage

5 sq. ft. at 1" Thickness per 50 lb. bag.

Size	Item #	Pack	Weight
50 lb. Bag	H5450	1	50 lbs.



BullCrete Premium Tire Rubber - Modified Pothole Patch

A unique blend of polymers makes BullCrete tougher, stronger and more flexible than blacktop. BullCrete Premium Pothole Patch is an all-weather, high performance pothole patch that forms a permanent repair for potholes, large cracks, utility cuts and more. It can be used in both wet and dry conditions, and its rapid-setting formula makes it ready for traffic instantly.

For Driveways, Parking Lots, Roads, & other Pavement Surfaces.

Features

- Better than blacktop
- Contains recycled ground tire rubber for superior performance
- Meets DOT requirements for "Green" recycled tire rubber technology
- All-weather application
- Ready for traffic instantly

Coverage

5 sq. ft. at 1" Thickness per 50 lb. bag.

Size	Item #	Pack	Weight
50 lb. Bag	H2704	1	50 lbs.



CONCRETE SEALER & REPAIR PRODUCTS





Professional Grade Concrete Sealer

SealBest Concrete Sealer is a professional grade 100% Acrylic water-based clear drying emulsion. It is designed to seal and protect both interior and exterior concrete surfaces.

Driveways, patios, sidewalks, pool decks, floors, quarry tiles, paver bricks, brick surfaces, masonry and more. For interior and exterior use.

Features

- Seals & Protects
- Weatherproofs
- Dustproofs
- Water-Based
- Clear Finish
- Cures Concrete
- Salt & Chemical Resistant

Coverage

200 square feet per gallon.

Size	Item #	Pack	Weight
4.75 Gal. Pail	H4000	1	45 lbs.
.9 Gal. Jug	H4100	6	8.85 lbs.



Professional Grade Ultra Gloss Sealer

SealBest Ultra Gloss Sealer is a 100% Water-Based Acrylic Clear Sealer that provides a high gloss protective and durable finish to paving stone and exposed aggregate surfaces.

Paving Stone, Decorative Stone and Exposed Aggregate Concrete.

Features

- Dries to a Clear Glossy Finish
- 100% Acrylic Formula
- Fast-Drying
- Durable Lasting Finish

Coverage

130 to 170 square feet per gallon per coat.

Size	Item #	Pack	Weight
4.75 Gal. Pail	H4110	1	52 lbs.
.9 Gal. Jug	H4111	6	10 lbs.



Professional Grade Concrete Patch

SealBest Concrete Patch is a 100% acrylic heavy-bodied trowel grade crack filler designed for filling larger cracks up to 1" wide in concrete surfaces. Concrete Patch can also be used to fill and repair damaged and spalled areas in concrete up to 1/4" deep.

Use to repair concrete driveways, floors, patios, sidewalks, pool decks and more.

Features

- Dries Neutral (Sand)
- 100% Acrylic Formulation
- Fills Cracks up to 1" Wide
- Heavy-Bodied Trowel Grade Formula
- Repairs Damaged & Spalled Areas up to 1/4" Deep

Coverage

Dependent upon depth and width of repair.

Size	Item #	Pack	Weight
.9 Gal. Pail	H4200	1	16.4 lbs.



Professional Grade Pourable Concrete Crack Sealant

Concrete Crack Sealant is a 100% acrylic elastomeric sealant designed for filling cracks up to 1/2" wide in concrete pavement surfaces.

All types of concrete surfaces.

Features

- Dries Neutral (Sand)
- Seals Out Moisture
- Fills Cracks up to 1/2" Wide
- High Solids Formulation for Lasting Repair

Coverage

Coverage is dependent upon depth and width of cracks. Typically, one quart of Concrete Crack Sealant will fill approximately 20-35 feet of cracks.

Size	Item #	Pack	Weight
.9 Gal. Jug	H4500	6	12.75 lbs.
.9 Qt. Bottle	H4400	12	3.2 lbs.



Professional Grade Concrete Fortifier & Bonding Agent

A specially formulated Acrylic Additive designed to dramatically increase the strength of concrete, mortar, stucco and other cement containing materials.

Concrete, mortar, stucco and other cement containing materials.

Features

- Increases UV, Chemical & Water Resistance
- Strengthens Concrete Repairs & Overlays
- Adheres New Concrete to Old
- Increases Flexibility

Size	Item #	Pack	Weight
.9 Qt. Bottle	H4600	12	-



Professional Grade Concentrated Concrete Cleaner

SealBest Concentrated Concrete Cleaner is an environmentally friendly, water based formula designed to clean all types of concrete and brick surfaces.

Concrete surfaces, driveways, patios, paver bricks, exposed aggregate and more.

Features

- Superior Cleaning Strength
- Environmentally Friendly
- Non-Toxic
- Water Based

Coverage

Dependent upon dilution rate with water.

Size	Item #	Pack	Weight
4.75 Gal. Pail	H4700	1	-



REFLECTIVE ROOF COATINGS



Premium White Elastomeric Roof Coating 15 Year Protection

SealBest Premium Professional Grade White Elastomeric Roof Coating is a superior performing product featuring unmatched adhesion, low temperature flexibility and durability. This product exceeds the stringent performance specifications required by ASTM-D6083. Forms a tough, durable rubber membrane over a variety of roof surfaces.

For EDPM rubber roofs, polyurethane foam, APP and SBS modified bitumen, asphalt, mobile homes and RV's, concrete wood and more.

Features

- Forms a Durable Rubber Membrane
- Meets ASTM D6083
- Superior Quality Industrial Formula Featuring The Highest Solids for Maximum Film Build
- Mildew Resistant
- Dries Bright White

Coverage

One gallon will coat approximately 50-70 square feet of roof surface.

Size	Item #	Pack	Weight
4.75 Gal. Pail	H3250	1	55 lbs.
.9 Gal. Pail	H3275	6	11.3 lbs.



White Elastomeric Roof Coating 10 Year Protection

White Elastomeric Roof Coating is a 100% acrylic elastomeric rubber-like material designed to protect a variety of roof surfaces. The outstanding reflectivity will lower interior home and building temperature providing energy savings up to 35%.

Cools & protects a variety of roof surfaces including aged aluminum roof coatings, metal, mobile homes, concrete, campers/RV's.

Features

- Outstanding Reflectivity & Flexibility
- Lowers Roof Temperature
- Protects Against Moisture
- Mildew Resistant
- Dries White

Coverage

One gallon will coat approximately 50-100 square feet of roof surface.

Size	Item #	Pack	Weight
4.75 Gal. Pail	H3100	1	55 lbs.
.9 Gal. Pail	H3000	6	11.3 lbs.



White Elastomeric Roof Patch

White Elastomeric Roof Patch is a 100% acrylic elastomeric emulsion patch material designed for a variety of roof repairs including cracks, seams, skylights, vents and metal joints.

For Patching Cracks, Filling Holes, and Repairing Flashings, Vents, Gutters, Seams and more.

Features

- Outstanding Flexibility
- Easy to Apply
- Dries White

Coverage

Dependent upon depth and width of areas to be repaired.

Size	Item #	Pack	Weight
.9 Gal. Pail	H3200	1	11.6 lbs.

REFLECTIVE ROOF COATINGS



100% Silicone White Roof Coating 50 Year Protection

A high solids 100% Silicone, moisture cure Elastomeric White Roof Coating designed to water proof and protect many types of roof surfaces.

Use on smooth surface BUR, modified Bitumen (MB), granulated cap sheet, well-adhered acrylic coating, concrete, metal, sprayed-in-place polyurethane foam, TPO, EPDM, PVC, Hypalon and various single-ply membrane roofing and flat roof applications.

Features

- Superior UV Resistance and Weathering Characteristics
- Fast Setting Moisture-Cure 100% Silicone Waterproofing Technology
- Lowers Roof Temperatures by Reflecting the Sun's Rays
- Forms a Tough, Durable Rubber Membrane
- 50 year warranty

Coverage

One gallon will cover approximately 50 square foot of roof surface depending on surface porosity.

Size	Item #	Pack	Weight
4.75 Gal. Pail	H3855	1	- lbs.
.9 Gal. Pail	H3851	6	- lbs.



100% Silicone White Roof Sealant

100% Silicone high solids sealant designed for a variety of roofing repair applications. Forms a tough, durable water proof and UV resistant rubber sealant.

Ideal for use Built-Up Roofing, Modified Bitumen, Single Ply Rubber Roofs, Polyurethane Foam, Metal, Concrete, Wood, Skylights, Flashings & more.

Features

- 100% Silicone Rubber Sealant
- Exceptional Adhesion & Flexibility
- Designed for Roofing & Joint Applications
- UV Resistant & Waterproof
- 50 Year Warranty

Coverage

Approximately 50 linear feet per 3/16" bead.

Size	Item #	Pack	Weight
10 Oz. Tube	H3858	12	- lbs.



Professional Grade Fibred Aluminum Roof Coating

SealBest Fibred Aluminum Roof Coating is a premium blend of select waterproofing asphalts and high quality leafing aluminum pigments. It reflects up to 90% of the sun's rays and reduces roof temperature by 15-20°F, increasing roof life and lowering energy costs.

For Metal, Concrete, Built-Up Roofs, MOD. Bitumen SBS/APP, Weathered Asphalt Coatings, Metal Buildings/Grain Bins, Mobile Homes, and more.

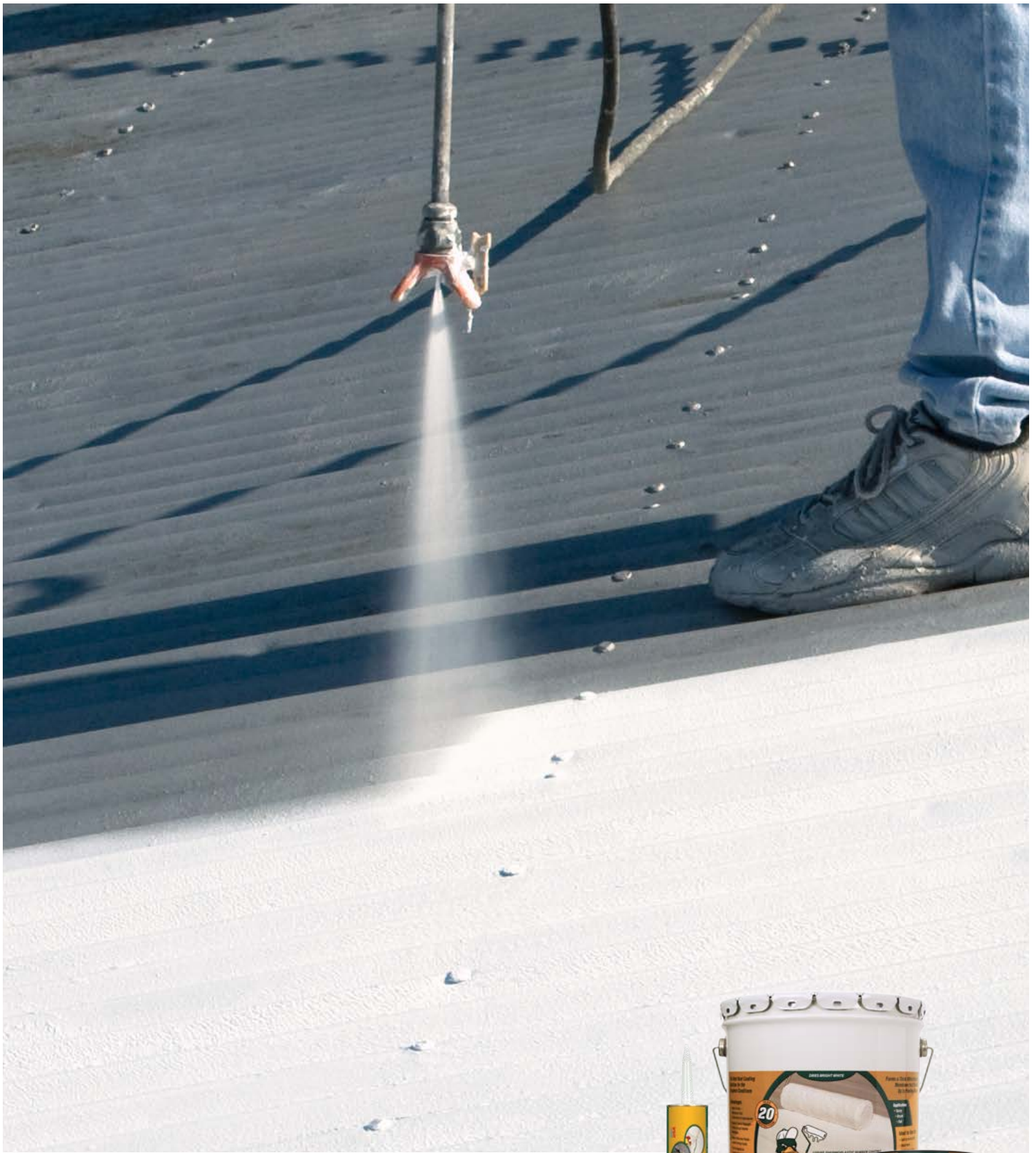
Features

- Highly Reflective
- Helps Reduce Cooling Costs
- Protects Roof Surfaces
- Dries Bright Silver

Coverage

Metal Roofs:
75-100 sq. ft. per gallon
Composition Roofs:
50-75 sq. ft. per gallon

Size	Item #	Pack	Weight
4.75 Gal. Pail	H9015	1	52 lbs.



DUCK COAT REFLECTIVE ROOF COATINGS



DUCK COAT REFLECTIVE ROOF COATINGS



Duck Coat

Liquid Thermoplastic Rubber Coating

Duck Coat is a white, highly elastomeric, rubber roof coating that provides a waterproof sealant over flat roofs. Duck Coat is formulated to hold up to ponding water conditions on flat roofs.

Can be installed on most roofing substrates including built up roofing (BUR) metal, concrete, EPDM Rubber, TPO, APP, modified bitumen, polyurethane foam, PVC, asphalt, wood and more.

Features

- Highly elastic and withstands roof contractions and expansions
- Superior tensile strength forms a tough rubber membrane
- Highly reflective finish lowers energy costs
- Can be applied in cooler temperatures as low as 35° F
- Freshly applied coating unaffected by rain or dew and will not wash off
- Creates a thermoplastic barrier
- Helps extend the life of the roof
- 20 year warranty

Coverage

Covers approximately 70 sq. ft. per gallon

Size	Item #	Pack	Weight
4.75 Gal. Pail	H2995	1	49.5 lbs.
.9 Gal. Pail	H2991	6	9.6 lbs.



Duck Patch

Liquid Thermoplastic Rubber Patch

Duck Patch professional grade Liquid Thermoplastic Rubber roof patch cures to a long lasting rubber-like film that remains flexible through extreme temperature ranges.

Ideal for repair of flashings, metal joints, seams, coping, vent pipes and more. Also ideal for repairing and sealing cracks, holes, and tears in built-up roofs and modified bitumen roofing materials. NOT RECOMMENDED FOR USE ON RUBBER ROOF MEMBRANES.

Features

- Stops roof leaks instantly
- Provides long lasting protection
- Use on wet or dry surfaces
- Dries white
- 20 Year Warranty

Coverage

Coverage will vary with thickness of application but will approximately fill 30 lineal feet per cartridge (1/4" thick.)

Size	Item #	Pack	Weight
10 Oz. Tube	H2989	12	.80 lbs.



ROOF & FOUNDATION



Professional Grade Asphalt Fibered Roof Coating

A mixture of liquid asphalt and fibers which forms a tough, adhesive bond with most roof surfaces. Highly resistant to water and other types of weather damage. Seals small cracks, joints, seams and nail holes. Dries Black.

Can be used on metal, built-up, concrete and wood roofs. Roof felts, concrete foundations and more.

Features

- Protects built-up composition, metal, gravel and concrete roofs and foundations
- Use for coating entire surface area, above or below grade
- Dries Black

Coverage

- Metal Roofing: 60-70 sq. ft. per gallon
- Felt or Composition: 50-60 sq. ft. per gallon
- Concrete or Masonry Surfaces: 25-50 sq. ft. per gallon
- Strip Composition or Dried Out Roofing: 25-50 sq. ft. per gallon

Size	Item #	Pack	Weight
4.75 Gal. Pail	H9005	1	52 lbs.
.9 Gal. Pail	H9000	6	9.2 lbs.



Professional Grade Cold Process Blind Nail & Lap Adhesive

A special blend of adhesive asphalts, fibers, special resins and other ingredients that assure its rapid fusion to the to the base surface. Intended primarily as a blind nailing cement for use with roll roofing. It creates a tight bond and prevents buckling and curling of edges. Roof adhesive is also suitable for application to older roofs to seal cracks and pinholes. Dries Black.

Adhesive for Rolled Roofing.

Features

- A Waterproof Adhesive for Use in the Application of Roll Roofing
- Bonds Layers of Roll Roofing
- Provides a Moisture Barrier
- Dries Black

Coverage

Approximately 50 square feet Per gallon, 150-175 linear feet per 4 inch lap.

Size	Item #	Pack	Weight
4.75 Gal. Pail	H9025	1	51 lbs.
.9 Gal. Pail	H9020	6	9.2 lbs.



Professional Grade All-Weather Roof Cement

When emergency repairs are required, All-Weather Roof Cement is the choice for professional satisfaction. This special blend of refined asphalts and adhesion promoters is designed to bond rapidly to moist, damp, wet or dry surfaces. Also can be used as a blind nailing cement for use with roll roofing, creating a tight bond and prevents buckling and curling of edges. It provides water repellency when conventional cements just wont stick.

Can be used on flashings, vents, skylights, metal joints, seams, coping, chimneys, and rolled roofing.

Features

- Stops Roof Leaks Instantly
- Provides Long Lasting Protection
- Use On Wet or Dry Surfaces
- Can be Used as Adhesive for Rolled Roofing
- Dries Black

Coverage

Roof Cement - Approximately 12 sq. ft. at 1/8 inch thick per gallon.

Roll Roofing - Approximately 50 square feet per gallon, 150-175 Linear foot/4 inch Lap.

Size	Item #	Pack	Weight
4.75 Gal. Pail	H9050	1	52 lbs.
.9 Gal. Pail	H9045	6	9.2 lbs.
10 Oz. Tube	H9030	12	.75 lbs.
29 Oz. Tube	H9035	12	2.2 lbs.



Acrylic Clear Drying Roof Patch

100% acrylic elastomeric water-based clear-drying roof patch.

Adhering shingles, repairing cracks and seams, flashings, vents, gutters, skylights and air conditioners.

Features

- Paintable Formula
- Water-Based
- Remains Flexible
- Easy To Apply
- Sag-Resistant Trowel Grade Formula
- Dries Clear

Coverage

Dependent upon depth and width of areas to be repaired.

Size	Item #	Pack	Weight
.9 Qt. Can	H3685	12	2.33 lbs.
10 oz. Tube	H3688	12	.8 lbs.



Ultra Concentrated Sprayable Roof Cleaner

SealBest "Ultra Concentrated" Sprayable Roof Cleaner is an environmentally friendly water based cleaner featuring superior cleaning action.

For cleaning asphalt and cedar shingles, EPDM, SBS and APP modified bitumen, mobile homes, campers and RV's. Also ideal for use on wood decks, composite decks, vinyl and aluminium siding.

Features

- Superior Cleaning Action
- Ideal for Cleaning Stains, Dirt, Algae, Mildew, Moss, & other Organic Fungus
- Won't Harm Plants or Painted Surfaces
- Environmentally Friendly Formula

Coverage

One gallon of concentrated roof cleaner makes enough solution to clean up to 2,250 sq. ft. of surface area. One 32 ounce bottle of concentrated roof cleaner cleans up to 550 s. ft. of surface area.

Size	Item #	Pack	Weight
.9 Gal. Pail	H3695	6	8.8 lbs.
32 oz. Bottle	H3693	12	2.38 lbs.



Shingle Saver Clear Roof Coating

Shingle Saver is a clear drying 100% Acrylic Elastomeric Roof Coating designed to renew and protect asphalt, fiberglass and Slate Shingles.

Roof surfaces including asphalt, fiberglass, and slate shingles. Wall surfaces including concrete, brick, stucco, exposed aggregate, decorative stone and wood.

Features

- Provides a "Like-New" Appearance
- Protects Against Shingle Deterioration
- Protects Against Sun, Rain, Ice and Snow
- Easy to Apply with Brush, Roller or Spray

Coverage

Approximately 100-200 square feet per gallon depending on surface porosity.

Size	Item #	Pack	Weight
.9 Gal. Pail	H3600	6	9.6 lbs.



Non-Fibered Foundation Coating

A professional grade sealer and waterproofer for all types of surfaces. Ideal for coating foundations, above or below grade. It will also add years of service as it rustproofs metal, preserves wood, waterproofs stone or brick and rejuvenates composition roof surfaces. Also may be used as a primer/tack coat and as a coating for fences and barns. Dries Black.

Concrete foundations (above and below grade), most roof surfaces, wood fences and barns.

Features

- Penetrates, Preserves and Protects Roofs, Foundations, Wood Fences, Barns and Most Other Surfaces
- Use for Coating Entire Surface Area, Above or Below Grade

Coverage

- Metal Surfaces: 90-100 sq. ft. per gallon
- Concrete and Masonry Surfaces: 75-100 sq. ft. per gallon
- Wood or Composition: 65-90 sq. ft. per gallon
- Worn Roofing: 50-80 sq. ft. per gallon

Size	Item #	Pack	Weight
4.75 Gal. Pail	H9060	1	51 lbs.



GrayShield Premium Acrylic Foundation Coating

Gray Shield Foundation coating is an Acrylic Elastomeric emulsion fortified with water resistant polymers. Gray Shield forms a liquid rubber membrane that seals and waterproofs a variety of surfaces. Gray Shield's UV resistance, water resistance and natural gray color allows for use below grade as well as above grade on surfaces that are exposed to weather.

Exterior concrete basement walls (above and below grade), polystyrene Styrofoam insulation board, poured concrete walls, foam, wood and more.

Features

- UV Resistant
- Waterproofs
- 100% Acrylic Elastomeric Formula
- Natural Gray Color
- Allows for Use Both Above & Below Grade for Complete Coverage & Protection

Coverage

Approximately 30 square feet per gallon.

Size	Item #	Pack	Weight
4.75 Gal. Pail	H3500	1	55 lbs.
.9 Gal. Pail	H3400	6	11.3 lbs.



DrySeal Premium Rubberized Foundation Coating

An elastomeric polymer modified asphalt emulsion designed for coating concrete foundations. Protects concrete foundations from moisture and water intrusion. Dries black.

Waterproofing exterior concrete basement walls, poured concrete walls, polystyrene/styrofoam insulation board, wood, foam and more.

Features

- Seals Out Water & Moisture
- Advanced Elastomeric Formula Bridges Hairline Cracks in Concrete
- Easy to Apply
- Soap & Water Cleanup
- Zero Voc Water-Based Formula

Coverage

Approximately 150 square feet per 4.75 Gallon Pail at 60 MIL thickness. Approximately 31 square feet Per .9 Gallon Pail at 60 MIL thickness.

Size	Item #	Pack	Weight
4.75 Gal. Pail	H3405	1	46 lbs.
.9 Gal. Pail	H3401	6	9.1 lbs.



SBS

Adhesive Mastic

A polymer-modified asphalt adhesive designed for use with rolled materials as well as patching and repair. Dries Black.

Various Roof Repairs Including Vent Pipes, Skylights, Chimneys, Roof Vents, BUR and SBS Membrane Systems

Features

- Repair Mastic and Adhesive
- For Below Grade Use in Heavy-Duty Foundation Water-Proofing and Damp-Proofing Applications
- Dries Black

Coverage

87 lineal feet of 1/4" x 1/4" bead per tube.

Size	Item #	Pack	Weight
29 Oz. Tube	H9100	12	2.2 lbs.



Professional Grade Neoprene Roof Cement

SealBest Neoprene Flashing Cement is a high performance, professional grade elastomeric flashing and repair product that cures to a long lasting rubber-like film. This product remains flexible through extreme temperature ranges. Its non-sag property and exceptional adhesion makes this an ideal cement for the construction and repair of all flashings, metal joints, seams, coping, vent pipes, skylights and chimneys. This product is ideally suited for sealing cracks, holes and tears in built-up roofs and modified bitumen single plys. Dries Black.

Vent pipes, sky lights, chimneys, roof vents.

Features

- High Performance Rubberized Elastomeric Cement
- Remains Flexible and Watertight
- Use in Wet or Dry Conditions
- 20 Year Protection
- Dries Black

Coverage

30 lineal feet of 1/4" x 1/4" bead per tube.

Size	Item #	Pack	Weight
12 Oz. Tube	H9065	12	.75 lbs.



Asphalt Coated Reinforcing Fabric

Ideal for use with roof cement to strengthen repairs on cracks, gutters, flashings, seams and more.

Use with roof cement to strengthen repairs on cracks, gutters, blisters, flashing, seams, and more.

Features

- Reinforces and strengthens patchwork for lasting repairs
- Asphalt coated for superior cohesion with patching materials

Size	Item #	Pack	Weight
6" X 50' Roll	H9070	6	.5 lbs.



Acrylic One-Step Roof Coating

One-Step Roof Coating is a 100% Acrylic Coating designed to form a tough, durable rubber membrane over a variety of roof surfaces. Ideal for commercial and industrial applications as well as residential use. This product meets the low temperature requirements of ASTM D6083 (Remains flexible down to -15 °F).

A variety of roof surfaces including Asphalt, Concrete, Wood, EPDM, APP, SBS, Mobile Homes, RV's, Polyurethane Foam and more.

Features

- 100% Acrylic Elastomeric UV Resistant Coating - Stays Flexible for Years
- Forms a Rubber Membrane that Flexes With Roof Movement in All Temperatures
- Easy to Apply - No Priming Required - Simply Apply By Brush or Roller
- Stays Flexible Down to -15°F
- Dries Black

Coverage

One gallon will coat approximately 50 square feet of roof surface per coat. Two coats are recommended for optimum performance and warranty purposes.

Size	Item #	Pack	Weight
4.75 Gal. Pail	H3680	1	60 lbs.
.9 Gal. Pail	H3670	6	12.1 lbs.



Acrylic One-Step Fiber Mesh Reinforced Roof Patch

One-Step Roof Patch is an acrylic fiber mesh reinforced patching material that exhibits outstanding strength and flexibility. One-Step eliminates the need for the use of fabric. One-Step's unique fiber mesh modification provides superior reinforcement and strength as compared to roof patches utilizing standard fabric.

One-Step is ideal for repairing cracks, seams, flashings, vent pipes, chimneys, skylights, and more.

Features

- Eliminates the Need for Fabric
- Ideal for All Roof Surfaces
- One Easy Step
- Dries Black

Coverage

One-gallon pail will cover approximately 9 square feet of roof surface when applied at 3/16" thick.

Size	Item #	Pack	Weight
4.75 Gal. Pail	H3651	1	60 lbs.
.9 Gal. Pail	H3650	6	12.1 lbs.



PRODUCT CATALOG
PERFORMANCE
COATINGS

2520 South Campbell Street
Sandusky, Ohio 44870

419-626-4375
Fax: 419-626-5477