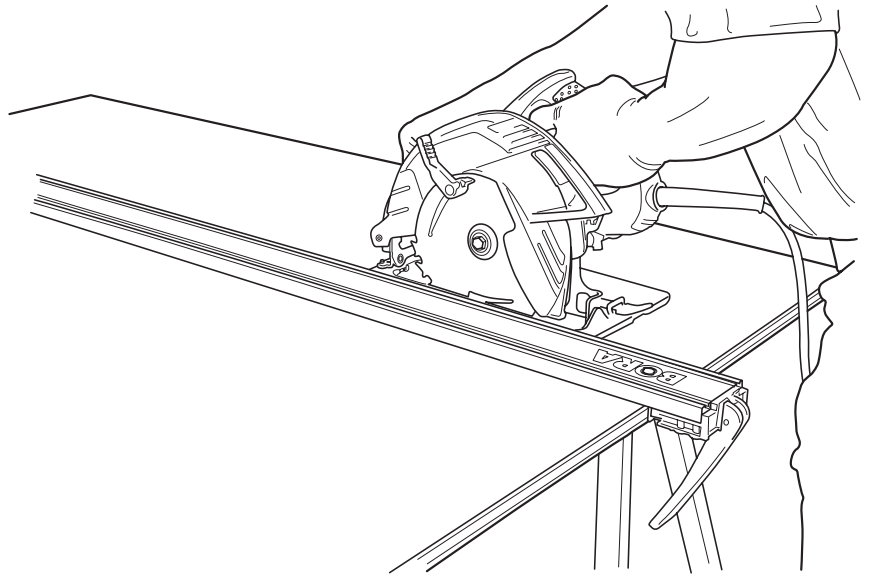


BORA[®]

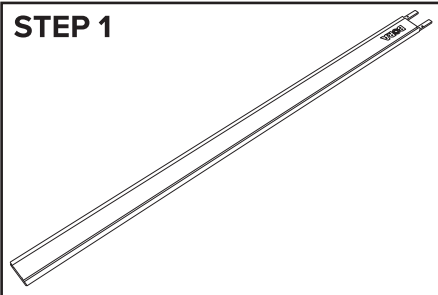
PORTAMATE

WTX CLAMP EDGE[™]



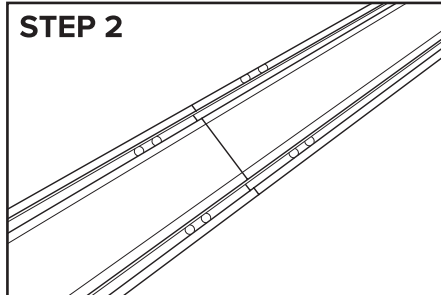
Instructions

STEP 1



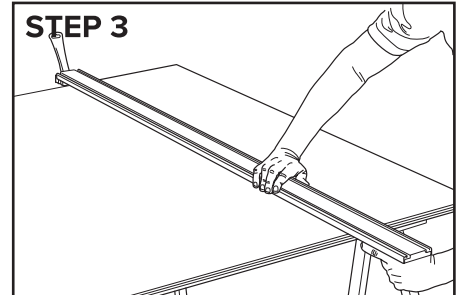
Remove the saw guide and extension from the pack and find a table or workbench to place them.

STEP 2



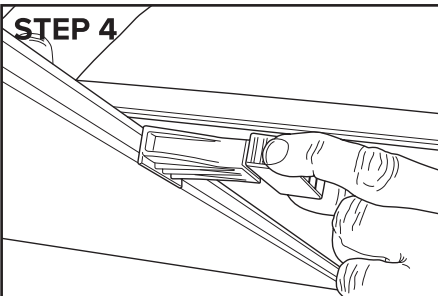
Connect the guide and the extension with the connectors supplied and tighten hardware.

STEP 3



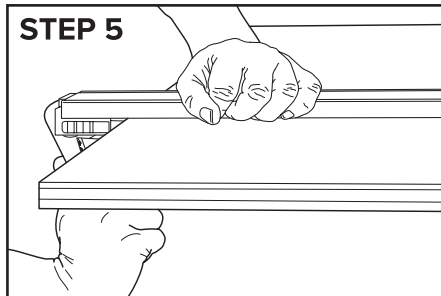
Move your guide to your work piece and pull the end clamp head so that it is 1" (25mm) wider than your material.

STEP 4



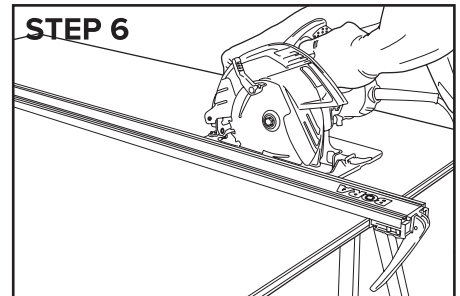
Now hold the clamp head between thumb and index finger as shown and push toward the material. Once this is in place you are ready to clamp.

STEP 5



With both guide heads in place, push the clamp handle down. This will push the clamp head closest to you toward the head you placed in Step 4.

STEP 6



Check that the clamp is in the correct place and secure to do work. If adjustments need to be made repeat steps 3 to 5. Only cut when you are satisfied the clamp is in the correct position and you are ready to work.

Questions?



Wait! Don't return product to store.

Give us a call first. 866-588-0395

or email us at info@affinitytool.com

Visit
www.boratool.com/service-support/warranty-registration

or scan the code with your smart phone's QR Code reader:



Follow ALL Power Tool Safety Regulations Before Performing Cutting Operations.

WWW.BORATOOL.COM

©2018

Instructions for Saw Plate/Clamp Edge

Thank you for purchasing the BORA Saw Plate. We've designed our WTX Accessory System to be easy to use, and produce the precise results you expect.

Every make and model of saw is different, with varying features and configurations. We have designed the saw plate to fit the great majority of them, and it will work with both right hand and left handed saws. If you find yourself having trouble installing the plate to your saw, check our website at www.boratool.com for answers, or call us at 866-588-0395.

Note: Steps 1 and 2 are for using the saw plate and a clamp edge together as a track piece. If you are not going to run the saw plate on a clamp edge, you may skip to step 3.

1. Loosen the top rail locking bolts (A) and adjust the saw plate's underbody rail to the width of your clamp edge. We have included a measurement arrow that shows the width of your clamp edge, but we recommend using the actual clamp edge for this step.
(Please note that the WTX Clamp Edge Saw Guide is not self-squaring and a square should be used to ensure it is clamped straight).
2. Once your clamp edge is snug yet slides freely, tighten the bolts. You can now remove the clamp edge.
3. Install the saw plate clamp as shown. For right hand saws, install on the left side, and vice-versa for left hand saws. Do not fully tighten the wingnut, as you will want to move/swing this out of the way for now.
4. Position your saw's base plate on the BORA saw plate. The majority of the plate will be on the motor side of your saw. Loosen the plunge mechanism for the blade and lift the saw motor. Butt the front of your saw's plate to the front of the BORA plate, and ensure your saw is square on both the front and the side. Tighten the two front clamps, ideally as far apart as possible.
5. Position the shorter end of the spring clamp bracket over your saw's plate as shown, and tighten the wingnut. If you raised your saw's motor, you can now lower and lock it as per your saw's instructions. Ensure your saw's blade cover moves freely.
6. Your saw plate is now ready to use. We recommend making a test cut on a scrap piece of wood twice the length of the Bora plate, and slightly backing it out until you can see the cut. Make a final "left/right" adjustment to the blade guide to this cut (note: The blade guide can be adjusted to your taste - some people like to use the center as a guide, others like the left or right pointer as the blade guide. (Neither is wrong.)

