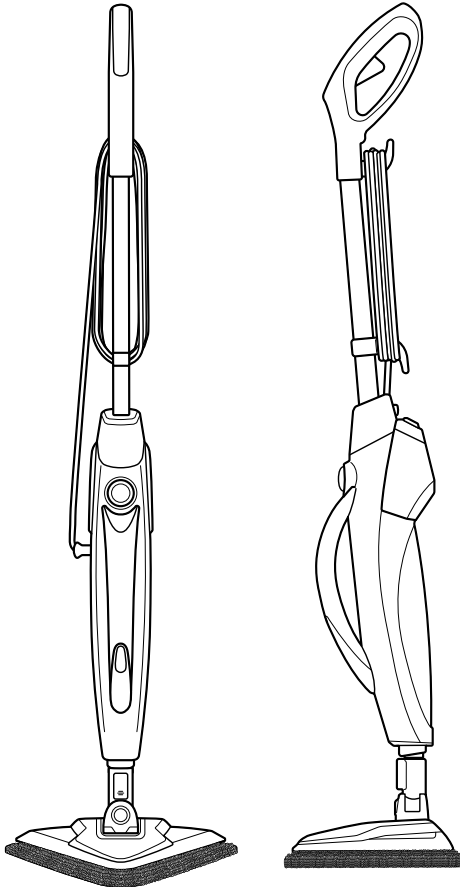


# POWEREDGE™ STEAM MOP

---

USER GUIDE  
2078 SERIES



# IMPORTANT SAFETY INSTRUCTIONS

## READ ALL INSTRUCTIONS BEFORE USING YOUR STEAM MOP.

When using an electrical appliance, basic precautions should be observed, including the following:

Always connect to a polarized outlet (left slot is wider than right). Unplug from outlet when not in use and before conducting maintenance.

## **WARNING** TO REDUCE THE RISK OF FIRE, ELECTRIC SHOCK, OR INJURY:

- » This appliance can be used by children 8 years old and above, and persons with reduced physical, sensory and mental capabilities or lack of experience and knowledge if they have been given supervision or instruction concerning use of the appliance in a safe way and understand the hazards involved. Cleaning and user maintenance shall not be made by children without supervision.
- » Children should be supervised to ensure that they do not play with the appliance.
- » If the cord is damaged, it must be replaced by the manufacturer, its service agent or similarly qualified persons in order to avoid a hazard.
- » Use extra care when cleaning on stairs.
- » Do not use with damaged cord or plug.
- » Do not use outdoors.
- » Always turn off this appliance before connecting or disconnecting the nozzle. Do not direct steam at people, animals, or at electrical outlets.
- » Do not expose to rain.

- » Store indoors.
- » Unplug from outlet when not in use and before conducting maintenance or troubleshooting.
- » Do not leave steam cleaner unattended.
- » Do not expose hair, loose clothing, fingers or body parts to openings or moving parts.
- » Do not service steam cleaner when it is plugged in.
- » Do not handle steam cleaner with wet hands.
- » Do not use steam cleaner if it has been dropped, damaged, left outdoors or dropped into water; return it to a service center.
- » Do not pull or carry by cord, use cord as a handle, close door on cord, pull cord around sharp corners or edges, or expose cord to heated surfaces.
- » Do not unplug by pulling on cord.
- » Do not use appliance in an enclosed space filled with vapor given off by oil-base paint, paint thinner, some moth proofing substances, flammable dust, or other explosive or toxic vapors.
- » Do not allow to be used as a toy.
- » Do not use on leather, wax polished furniture or floors, synthetic fabrics, velvet or other delicate, steam-sensitive materials.
- » Do not immerse in water or liquid.
- » Not for space heating purposes.
- » Do not use for any purpose other than described in this User's Guide.
- » Use only manufacturer's recommended attachments - use of attachments not provided or sold by BISSELL may cause fire, electric shock or injury.
- » Never put descaling, aromatic, alcoholic, detergent or vinegar products into the steam cleaner, as this may damage it or make it unsafe for use.
- » Unplug by grasping the plug, not the cord.
- » Close attention is necessary when used by or near children.

## SAVE THESE INSTRUCTIONS FOR FUTURE USE

This model is for household use only. Commercial use of this unit voids the manufacturer's warranty.

## THIS APPLIANCE HAS A POLARIZED PLUG

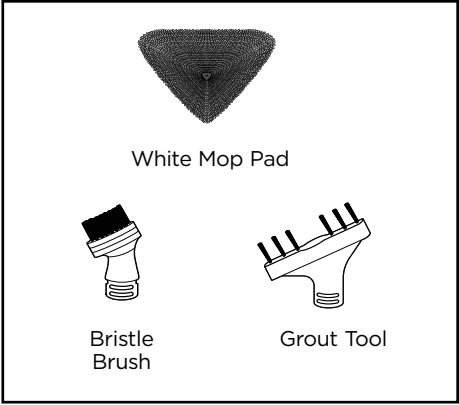
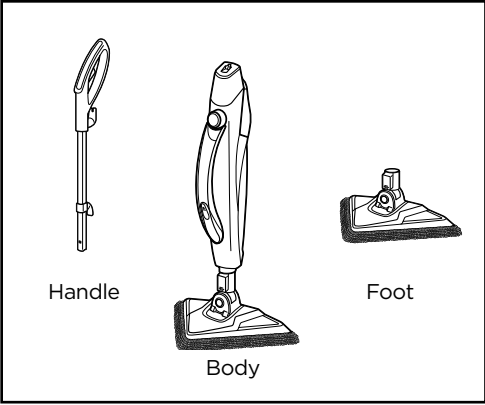
To reduce the risk of electric shock, this appliance has a polarized plug (one blade is wider than the other). This plug will fit in a polarized outlet only one way. If the plug does not fit fully in the outlet, reverse the plug. If it still does not fit, contact a qualified electrician to install a proper outlet. Do not change the plug in any way.

# Thanks for buying a BISSELL PowerEdge™ Steam Mop

We love to clean and we're excited to share one of our innovative products with you. We want to make sure your steam mop works as well in two years as it does today, so this guide has tips on how to use (pages 5-8), maintain (page 9), and if there is a problem, troubleshoot (page 10).

Your steam mop needs a little assembly before you can put it to work, so flip to page 5 and let's get started!

## What's In The Box?



**NOTE:** Standard accessories may vary by model. To identify what should be included with your purchase, please refer to the "Carton Contents" list located on the carton top flap.

Safety Instructions.....2

Product View.....4

Assembly .....5

Operations .....5-8

Maintenance & Care .....9

Troubleshooting .....10

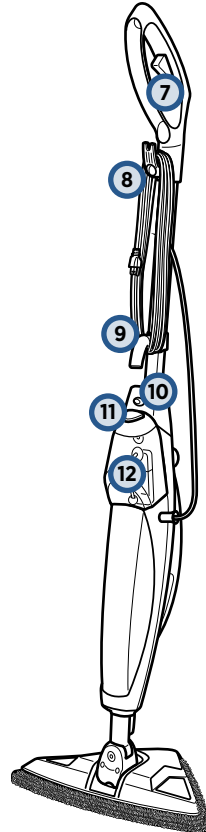
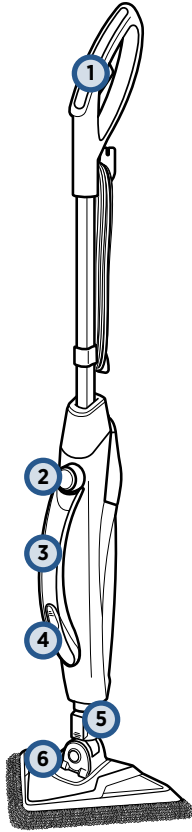
Warranty .....11

Service.....11

Product Registration..... 12

Consumer Care..... 12

# Getting to Know Your PowerEdge™



- 1 Handle
- 2 Ready Light
- 3 Pod Handle
- 4 Handheld Steam Trigger
- 5 Handheld Steamer Release Button
- 6 Triangle Mop Foot

- 7 Steam Trigger
- 8 Upper Cord Wrap
- 9 Lower Cord Wrap
- 10 Button to Remove Handle
- 11 Water Tank Release Button
- 12 Easy Fill Water Tank

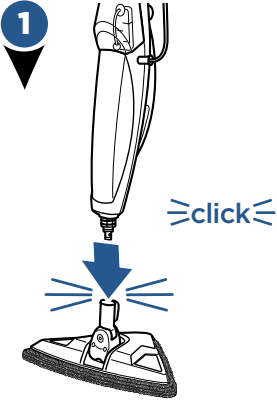
# Assembly

## WARNING

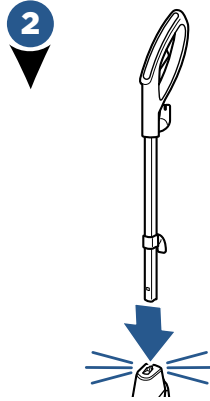
Do not plug in your PowerEdge™ Steam Mop until you are familiar with all instructions and operating procedures.

Your BISSELL PowerEdge™ Steam Mop comes in three easy to assemble components and does not require any tools to assemble:

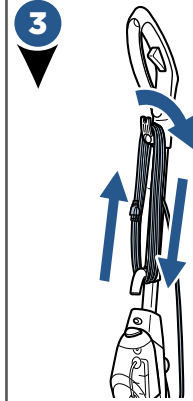
- Handle
- Body
- Triangle Mop Foot



Attach lower body to mop pad foot by snapping it into place.



Then, insert handle into body of unit until you hear a click.

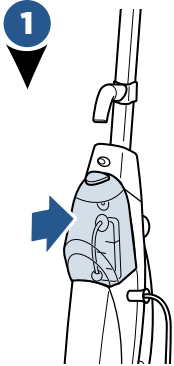


Wrap the cord around the Upper and Lower Cord Wrap.

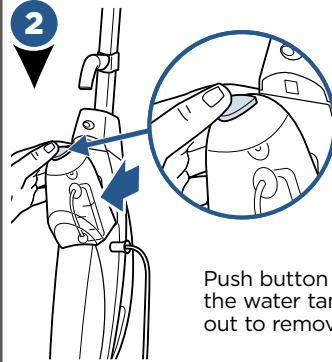
# Filling Your Water Tank

## WARNING

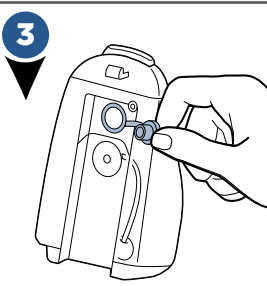
Never put descaling, alcoholic, vinegar, or detergent products into the steam cleaner, as this may damage it or make it unsafe for use.



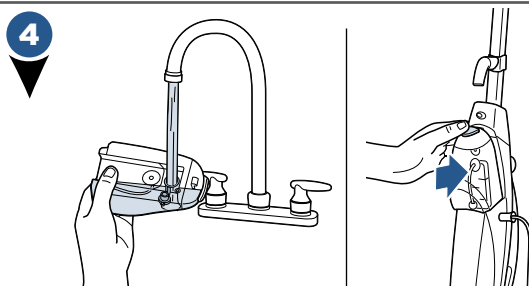
1  
The Easy Fill Water Tank is located on the back of the machine.



2  
Push button on top of the water tank and lift out to remove.



3  
To fill the water tank, remove grey rubber nozzle on the back of the water tank.



4  
Fill water tank with distilled or demineralized water, recommended in place of tap water. Place the nozzle back into the water tank after filling and return tank to machine.

### A few notes about filling the Water Tank:

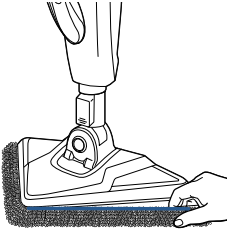
- The Water Tank's capacity is 300 mL (10 oz). **DO NOT USE CHEMICALS IN THE WATER TANK OF YOUR POWEREDGE™ STEAM MOP.**

**TIP:** Use of distilled water or demineralized water is recommended to prolong the life of your hard floor cleaner.

# Cleaning Your Hard Floors

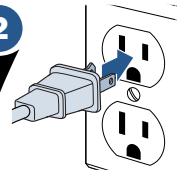
**NOTE:** Before you clean, thoroughly sweep or vacuum floor prior to cleaning with your PowerEdge™ Steam Mop. Your hard floor cleaner is designed to clean hard flooring, such as ceramic tile, marble, stone and sealed hard wood floors. Use on waxed or some unwaxed floors may result in a diminished glossiness. The hard floor cleaner is not for use on unsealed wood floors. For best results, test in an inconspicuous area and check the care instructions from your flooring manufacturer.

1



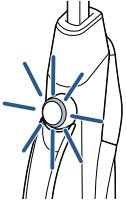
Attach mop pad by wrapping around bottom of foot, making sure gray stitching is located on the front of foot and the Quick Grip Release Tab is located on the back.

2



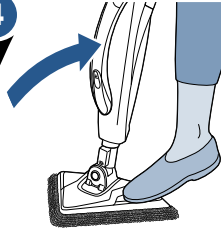
Plug machine into an outlet.

3



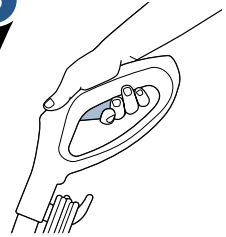
When the machine is plugged in, the READY light will start to blink. The READY light will turn to a solid light when the machine is ready to use.

4



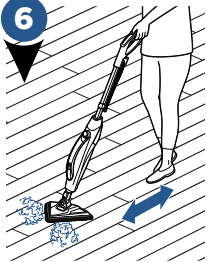
Step on the back of the foot to recline the body of machine to begin cleaning.

5



Push the trigger on the handle to release steam.

6



To be sure to sanitize an area of your floor, use the microfiber cloth pad and slowly and evenly stroke your steam mop back and forth at least three times over the area using continuous steam. For best results, remove the pad and wash after use.

7



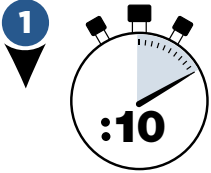
For optimum corner cleaning, perform two cleaning strokes along each wall towards the corner to be cleaned. When done cleaning, unplug the machine.

**NOTE:** Upon the first use of your steam mop or first use after refilling the water tank, the pump may make a “knocking” sound. This is normal and will diminish after a few seconds.

**NOTE:** The steam mop generates hot steam, so move the unit continuously when depressing the trigger as damage to flooring can occur. The trigger does not need to be depressed at all times.

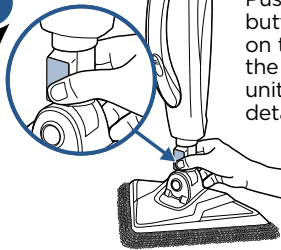
# Using the Handheld Steamer

**CAUTION:** Before connecting or disconnecting a tool from the steam cleaner, make certain that steam is no longer coming from the nozzle. Rotate the unit slowly upward to a vertical position to allow any excess steam to release prior to attaching a tool.

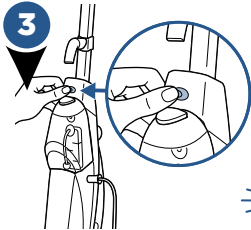
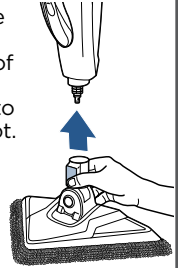


When changing from mopping to the handheld feature, wait 10 seconds for steam to cool down.

2

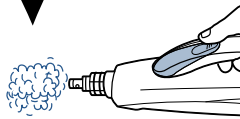


Push the release button located on the bottom of the body of the unit and lift up to detach from foot.



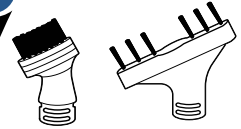
To remove the handle from the machine, push the button located above the clean water tank and lift up the handle.

4



Push the trigger on the handheld steamer to release steam.

5

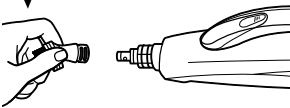


Bristle Brush

Grout Tool

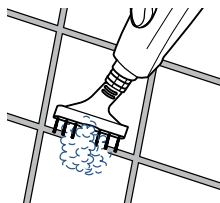
Your PowerEdge™ Steam Mop may have come with tools to attach to the pod.

6

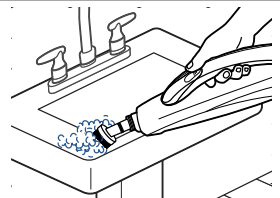


Connect desired tool to end of the pod based on your cleaning needs.

7

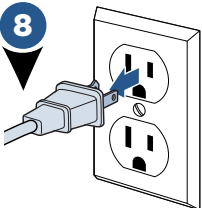


Use the **Grout Tool** to clean flooring that has visible grout you would like to remove.



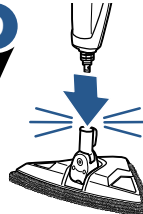
Use the **Bristle Brush** to clean around your sinks, countertops, showers, etc.

8



When done cleaning, unplug the machine.

9



Insert foot back into body of the machine until it snaps in place. If you removed the handle, insert handle back into body of machine until it snaps into place.

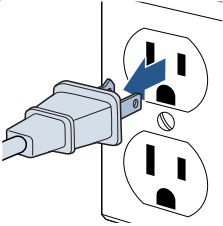


# Maintenance: Cleaning Your Steam Mop

## **⚠️ WARNING**

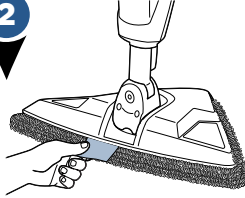
To reduce the risk of fire, electric shock or injury, disconnect plug from electrical outlet before performing maintenance or troubleshooting.

1



Unplug the machine from the outlet.

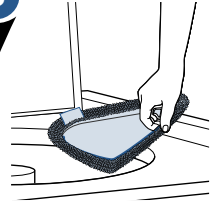
2



Carefully remove mop pad using the Quick Grip Release Tab from the mop head.

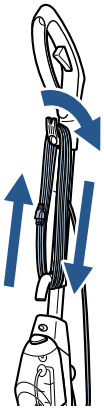
**NOTE:** Mop pad and lower assembly may be hot.

3



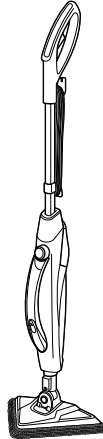
Mop pads can be machine washed in warm water. Use only liquid detergents. Do not use fabric softeners or bleach. For best results, air dry.

4



Wrap cord around Upper and Lower Cord Wrap on the back of the steam mop and wipe all surfaces of the machine with a soft cloth.

5



Store upright in a protected, dry area. Store with dry pads as wet mop pads may damage wood and other delicate hard floors.

**NOTICE:** Since this product uses water, it must not be stored where there is danger of freezing. Freezing will damage internal components and may void the warranty.

# Troubleshooting

## **WARNING**

To reduce the risk of electric shock, disconnect plug from electrical outlet before performing maintenance or troubleshooting checks.

<b>Problem</b>	<b>Possible causes</b>	<b>Remedies</b>
<b>Reduced steam OR no steam</b>	Water tank empty	Refill tank
	Handle not installed properly	Push the handle all the way into the unit until you hear a click
	Foot not installed properly	Insert the body of the machine into the steam mop foot until you hear a click
<b>Streaking</b>	Dirty mop pad	Remove and wash pad per instructions before further use
	Use on waxed or oiled floor	If you have used floor polishes or wax on your floors, steam products may decrease glossiness. Refer to the wax or polish manufacturer. If you don't wax or polish your floors, check the floor care instructions from your flooring manufacturer.
<b>Leaking</b>	Mop pad is too wet	Remove and replace with dry mop pad
<b>Knocking Noise</b>	First use or water tank is empty	Fill water tank and knocking will diminish after a few seconds

# Warranty

This warranty gives you specific legal rights, and you may also have other rights which may vary from state to state. If you need additional instruction regarding this warranty or have questions regarding what it may cover, please contact BISSELL Consumer Care by E-mail, telephone, or regular mail as described below.

## Limited One-Year Warranty

Subject to the \*EXCEPTIONS AND EXCLUSIONS identified below, upon receipt of the product BISSELL will repair or replace (with new or remanufactured components or products), at BISSELL's option, free of charge from the date of purchase by the original purchaser, for one year any defective or malfunctioning part.

See information below on "If your BISSELL product should require service".

This warranty applies to product used for personal, and not commercial or rental service. This warranty does not apply to fans or routine maintenance components such as filters, belts, or brushes. Damage or malfunction caused by negligence, abuse, neglect, unauthorized repair, or any other use not in accordance with the User's Guide is not covered.

BISSELL IS NOT LIABLE FOR INCIDENTAL OR CONSEQUENTIAL DAMAGES OF ANY NATURE ASSOCIATED WITH THE USE OF THIS PRODUCT. BISSELL'S LIABILITY WILL NOT EXCEED THE PURCHASE PRICE OF THE PRODUCT.

**Some states do not allow the exclusion or limitation of incidental or consequential damages, so the above limitation or exclusion may not apply to you.**

## \*EXCEPTIONS AND EXCLUSIONS FROM THE TERMS OF THE LIMITED WARRANTY

THIS WARRANTY IS EXCLUSIVE AND IN LIEU OF ANY OTHER WARRANTIES EITHER ORAL OR WRITTEN. ANY IMPLIED WARRANTIES WHICH MAY ARISE BY OPERATION OF LAW, INCLUDING THE IMPLIED WARRANTIES OF MERCHANTABILITY AND FITNESS FOR A PARTICULAR PURPOSE, ARE LIMITED TO THE ONE YEAR DURATION FROM THE DATE OF PURCHASE AS DESCRIBED ABOVE.

Some states do not allow limitations on how long an implied warranty lasts so the above limitation may not apply to you.

**NOTE:** Please keep your original sales receipt. It provides proof of date of purchase in the event of a warranty claim.

# Service

## If your BISSELL product should require service:

Contact BISSELL Consumer Care to locate a BISSELL Authorized Service Center in your area.

If you need information about repairs or replacement parts, or if you have questions about your warranty, contact BISSELL Consumer Care.

### Website:

[www.BISSELL.com/service-centers](http://www.BISSELL.com/service-centers)

### E-mail:

[www.BISSELL.com/email-us](mailto:www.BISSELL.com/email-us)

### Call:

BISSELL Consumer Care  
1-800-237-7691  
Monday - Friday 8am - 10pm ET  
Saturday 9am - 8pm ET  
Sunday 10am - 7pm ET

## Please do not return this product to the store.

Other maintenance or service not included in the manual should be performed by an authorized service representative.

For any questions or concerns, BISSELL is happy to be of service. Contact us directly at 1-800-237-7691.

# Register your product today!

Registering is quick, easy and offers you benefits over the lifetime of your product.

## You'll receive:

### **BISSELL Rewards Points**

Automatically earn points for discounts and free shipping on future purchases.

### **Faster Service**

Supplying your information now saves you time should you need to contact us with questions regarding your product.

### **Product Support Reminders and Alerts**

We'll contact you with any important product maintenance reminders and alerts.

### **Special Promotions**

Optional: Register your email to receive notice of offers, contests, cleaning tips and more!

Visit [www.BISSELL.com/registration!](http://www.BISSELL.com/registration!)

## Visit us online at: **BISSELL.com**

When contacting BISSELL, have model number of cleaner available.

Please record your

Model Number: \_\_\_\_\_

Please record your

Purchase Date: \_\_\_\_\_

**NOTE: Please keep your original sales receipt. It provides proof of purchase date in the event of a warranty claim. See Warranty on page 11 for details.**

*We can't wait to hear from you!*

We really do read your comments, tweets, and posts.

**Rate this product on BISSELL.com**

or any of our retailer sites and let us (and millions of your closest friends) know what you think!

## Parts & Supplies

For Parts and Supplies, go to **BISSELL.com** and enter your model number in the search field.

For cleaning tips and more visit [www.BISSELL.com](http://www.BISSELL.com) or find us at:



BISSELL



BISSELLClean



BISSELLClean



BISSELL



BISSELL



©2017 BISSELL Homecare, Inc  
Grand Rapids, Michigan  
All rights reserved. Printed in China  
Part Number 161-1610 03/17 RevB  
Visit our website at: [www.BISSELL.com](http://www.BISSELL.com)