



VINYL COMPOSITION TILE

STANDARD EXCELON®

Imperial® Texture

PREMIUM EXCELON®

Crown Texture™ | Stonetex® | Feature™ Tile & Strips
Raffia® Stream™ with Diamond 10® Technology

A Classic, Economical Value.

Armstrong Flooring creates products that push the limits of color, pattern, performance, and sustainability to meet the multiple demands of modern interiors. Developed through our Continuum Solutions™, Excelon® VCT harmonizes with other products across the entire Armstrong Flooring portfolio to help you execute your design intent.

The durable construction ensures lasting beauty in high-traffic areas, while flowing linear patterns, organic looks, and densely patterned earth tones effectively mask scuffs and soil in busy spaces. Colors range from vivid hues to quiet neutrals with a large selection of light-reflective colors that can have a big impact on energy reduction strategies and savings.

With Excelon® VCT having one of the lowest carbon footprints among all our resilient flooring products, it is an ideal choice for hallways, classrooms and cafeterias, mass market retailers and grocery stores, restaurants, and a wide range of public environments. It's versatile, durable, and easy to maintain using standard maintenance protocols.

Premium Excelon® Raffia® Stream™ is available with Diamond 10® Technology. Keep tile floors looking newer longer, and with lower maintenance costs.



Trusted Long Term Performance.

- Decades of proven performance and durability
- Leader in the industry for over 50 years
- High quality with a reliable limited warranty

Healthy Environments.

- Free of Ortho-Phthalates* and Heavy Metals
- Low VOC Emissions and FloorScore® certified
- Composed of 85% North American limestone
- Recyclable through the On&On® Recycling Program
- Third-party certified Environment Product Declaration (EPD)
- Health Product Declaration (HPD)
- Helps conserve energy when high light-reflective colors are selected

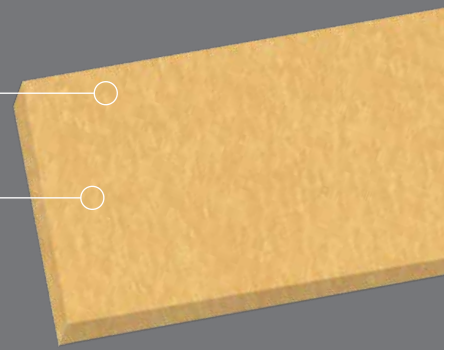
** Select product lines are ortho-phthalate free, with the exception of recycled content.*

Exclusive Fast Start® Factory Finish

- Protective layer during installation
- Makes initial maintenance quick and easy

Through-Color/Pattern Wear Layer

- Pattern/color wear performance:
 - High durability
 - Gouge resistance
 - Rolling load impact resistance
 - Appearance retention

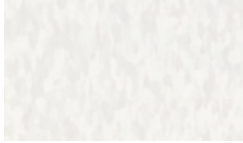


Standard Excelon® Imperial® Texture
51938 willow green; 57537 alligator; 57539 shoreline;
57542 tropical green; 57546 lime zest; 57547 eucalyptus

VINYL COMPOSITION TILE

Standard Excelon® Imperial® Texture

57518
white out



12 in. x 12 in.

51933
blue cloud



12 in. x 12 in.

52514
jubilee white



12 in. x 12 in.

51941
polar white



12 in. x 12 in.

51929
sandy beach



12 in. x 12 in.

52513
cirque white



12 in. x 12 in.

52500
carnival white



12 in. x 12 in.

52505
harlequin white



12 in. x 12 in.

51899
cool white



12 in. x 12 in.

51911
classic white



12 in. x 12 in.

59234
silk



12 in. x 12 in.

51836
shelter white



12 in. x 12 in.

59237
tracery



12 in. x 12 in.

51839
fortress white



12 in. x 12 in.

52520
faire white



12 in. x 12 in.

51876
mint cream



12 in. x 12 in.

51810
washed linen



12 in. x 12 in.

51811
antique white



12 in. x 12 in.

51858
sandrifft white



12 in. x 12 in.

51809
desert beige



12 in. x 12 in.

51873
brushed sand



12 in. x 12 in.

51908
pewter



12 in. x 12 in.

51877
earth green



12 in. x 12 in.

51883
dusty miller



12 in. x 12 in.

59236
linseed



12 in. x 12 in.

51805
camel beige



12 in. x 12 in.

57501
nougat



12 in. x 12 in.

51801
doeskin peach



12 in. x 12 in.

51905
hazelnut



12 in. x 12 in.

57502
café latte



12 in. x 12 in.

51830
cottage tan

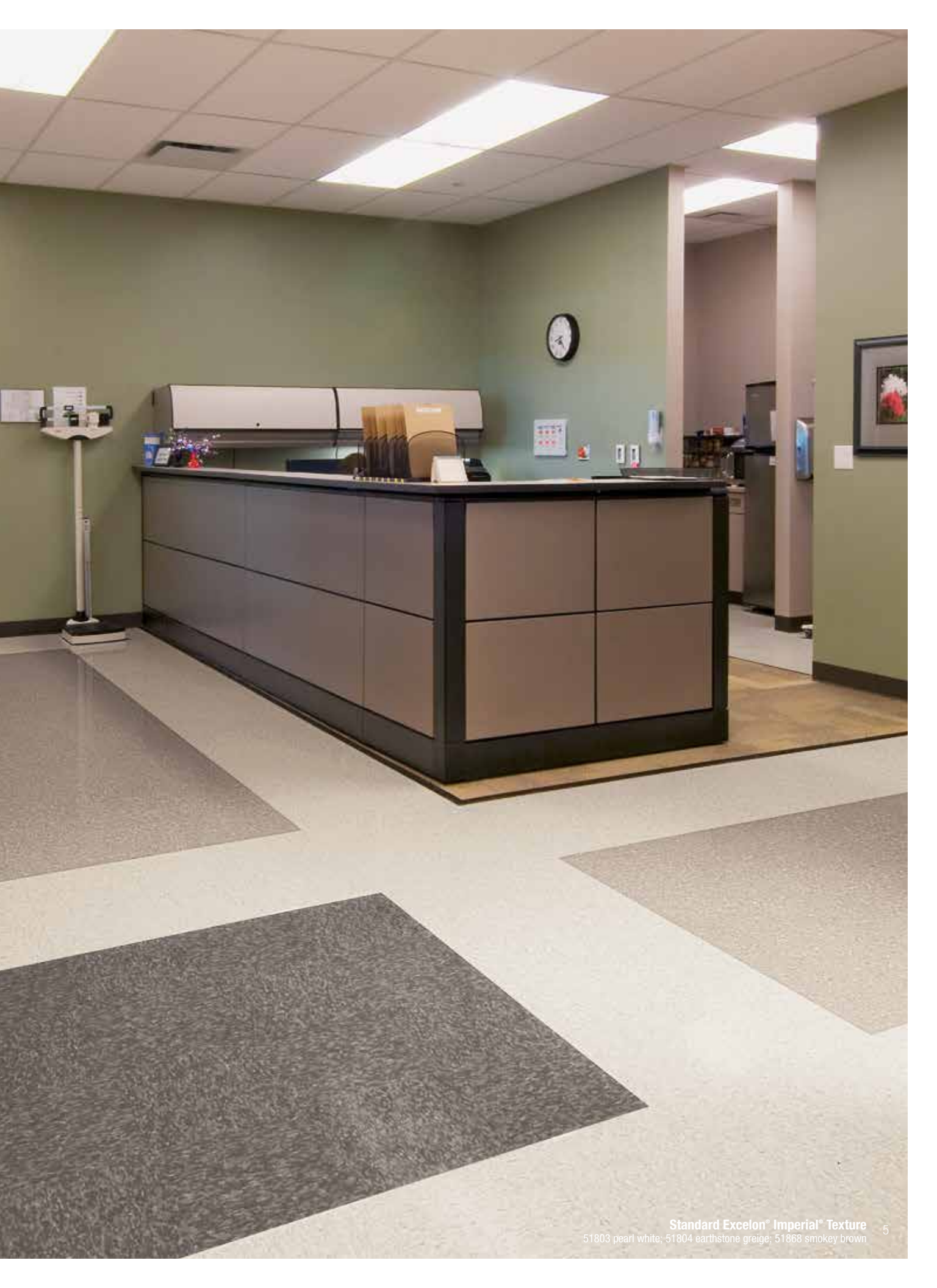


12 in. x 12 in.

51928
pebble tan



12 in. x 12 in.



VINYL COMPOSITION TILE

Standard Excelon® Imperial® Texture

51804
earthstone greige



12 in. x 12 in.

51901
taupe



12 in. x 12 in.

51803
pearl white



12 in. x 12 in.

57504
chocolate



12 in. x 12 in.

59243
tannin



12 in. x 12 in.

51868
smokey brown



12 in. x 12 in.

59240
peat



12 in. x 12 in.

51927
field gray



12 in. x 12 in.

51904
sterling



12 in. x 12 in.

51915
charcoal



12 in. x 12 in.

51861
soft warm gray



12 in. x 12 in.

51860
soft cool gray



12 in. x 12 in.

51807
shadow blue



12 in. x 12 in.

51903
blue/gray



12 in. x 12 in.

51932
lunar blue



12 in. x 12 in.

51916
dutch delft



12 in. x 12 in.

51820
marina blue



12 in. x 12 in.

51946
genetian blue



12 in. x 12 in.

51910
classic black



12 in. x 12 in.

57531
go blue



12 in. x 12 in.

57535
blue moon



12 in. x 12 in.

51821
caribbean blue



12 in. x 12 in.

57541
bay blue



12 in. x 12 in.

57539
shoreline



12 in. x 12 in.

51824
sea green



12 in. x 12 in.

57542
tropical green



12 in. x 12 in.

57537
alligator



12 in. x 12 in.

57546
lime zest



12 in. x 12 in.

57510
kickin' kiwi



12 in. x 12 in.

51812
lemon yellow



12 in. x 12 in.

57509
lemon lick



12 in. x 12 in.

57536
sun gold



12 in. x 12 in.



Standard Excelon® Imperial® Texture
51929 sandy beach; 57517 bodacious blue
57531 go blue; 57535 blue moon

VINYL COMPOSITION TILE

Standard Excelon® Imperial® Texture

57516
screamin' pumpkin



12 in. x 12 in.

57538
heat wave



12 in. x 12 in.

57534
ruby red



12 in. x 12 in.

51880
maraschino



12 in. x 12 in.

51816
cherry red



12 in. x 12 in.

51814
pomegranate red



12 in. x 12 in.

57514
shocking



12 in. x 12 in.

57545
wineberry



12 in. x 12 in.

57530
crimson



12 in. x 12 in.

57544
adobe



12 in. x 12 in.

57533
tiger eyes



12 in. x 12 in.

51800
buttercream yellow



12 in. x 12 in.

51878
golden



12 in. x 12 in.

59241
honey



12 in. x 12 in.

51869
humus



12 in. x 12 in.

59244
patina



12 in. x 12 in.

51942
curried caramel



12 in. x 12 in.

59235
impasto



12 in. x 12 in.

51866
little green apple



12 in. x 12 in.

51885
granny smith



12 in. x 12 in.

51881
blueberry



12 in. x 12 in.

51874
grayed blue



12 in. x 12 in.

57506
colorado stone



12 in. x 12 in.

57548
cypress



12 in. x 12 in.

51938
willow green



12 in. x 12 in.

51872
tea garden green



12 in. x 12 in.

51906
teal



12 in. x 12 in.

51802
silver green



12 in. x 12 in.

51875
mid grayed blue



12 in. x 12 in.

57547
eucalyptus



12 in. x 12 in.

51947
basil green



12 in. x 12 in.

57532
grayson



12 in. x 12 in.

VINYL COMPOSITION TILE

Standard Excelon® Imperial® Texture

51882
serene blue



12 in. x 12 in.

57508
blue dreams



12 in. x 12 in.

57517
bodacious blue



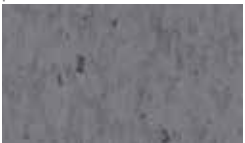
12 in. x 12 in.

59230
victoria blue



12 in. x 12 in.

57551
perfect storm



12 in. x 12 in.

57543
lavender fields



12 in. x 12 in.



Standard Excelon® Imperial® Texture

51810 washed linen; 51814 pomegranate red; 57514 sheeking
57536 sun gold; 57544 adobe ; 59236 linseed

VINYL COMPOSITION TILE

Premium Excelon® Crown Texture™

5C234
silk



12 in. x 12 in.

5C811
antique white



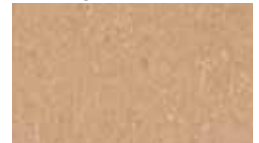
12 in. x 12 in.

5C858
sandrift white



12 in. x 12 in.

5C805
camel beige



12 in. x 12 in.

5C899
cool white



12 in. x 12 in.

5C803
pearl white



12 in. x 12 in.

5C236
linseed



12 in. x 12 in.

5C904
sterling



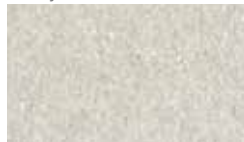
12 in. x 12 in.

5C861
soft warm gray



12 in. x 12 in.

5C237
tracery



12 in. x 12 in.

5C908
pewter



12 in. x 12 in.

5C240
peat



12 in. x 12 in.

5C901
taupe



12 in. x 12 in.

5C868
smokey brown



12 in. x 12 in.

5C915
charcoal



12 in. x 12 in.

5C910
classic black



12 in. x 12 in.

5C878
golden



12 in. x 12 in.

5C866
lille green apple



12 in. x 12 in.

5C875
mid grayed blue



12 in. x 12 in.

5C230
victoria blue



12 in. x 12 in.

5C880
maraschino



12 in. x 12 in.



VINYL COMPOSITION TILE

Premium Excelon® Stonetex®

52140
chalk white



12 in. x 12 in.

52126
gravel blue



12 in. x 12 in.

52160
hematite



12 in. x 12 in.

52139
limestone beige



12 in. x 12 in.

52125
granite gray



12 in. x 12 in.

52161
charcoal



12 in. x 12 in.

52144
coal black



12 in. x 12 in.

52127
stone white



12 in. x 12 in.

52122
pebble gray



12 in. x 12 in.

52147
pumice stone



12 in. x 12 in.

52128
desert dust



12 in. x 12 in.

52143
sandstone tan



12 in. x 12 in.

52149
cocoa brown



12 in. x 12 in.

52166
mochaccino



12 in. x 12 in.

52155
forest moss

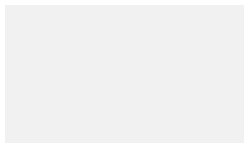


12 in. x 12 in.

VINYL COMPOSITION TILE

Premium Excelon® Feature™ Tile & Strips

chalk II



56830 12 in. x 12 in.
50830 2, 4, 6 in. x 24 in.

yellow II



56823 12 in. x 12 in.
50823 2, 4, 6 in. x 24 in.

blue II



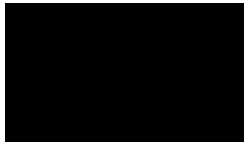
56812 12 in. x 12 in.
50812 2, 4, 6 in. x 24 in.

red II

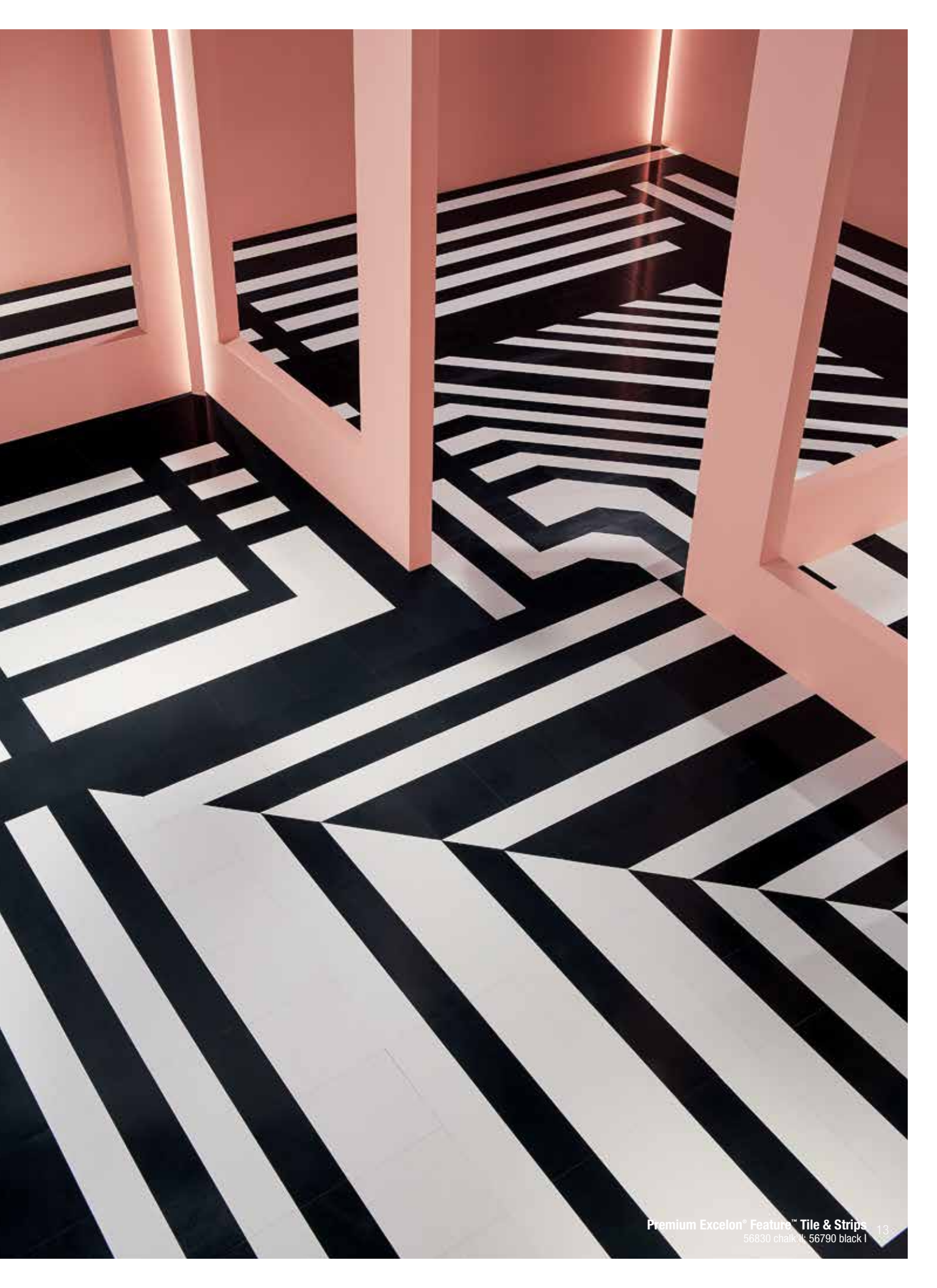


56806 12 in. x 12 in.
50806 2, 4, 6 in. x 24 in.

black I



56790 12 in. x 12 in.
50790 2, 4, 6 in. x 24 in.





Premium Flooring. Reduced Cost of Ownership.

Premium Excelon® Raffia® Stream™ with Diamond 10® Technology keeps your floors looking newer longer at a lower maintenance cost than traditional VCT.

Patented Diamond 10® Technology provides a protective coating, requiring fewer coats of floor polish to maintain your floor, reducing the cost of ownership significantly over the life of your floor.

Look Down for Savings.

Premium Excelon® Raffia® Stream™ with Diamond 10® Technology reduces the cost of ownership by:

- Reducing the initial application of polish by 50%
- Eliminating or reducing restorative stripping
- Maximizing gloss level with three coats of high-quality commercial floor polish

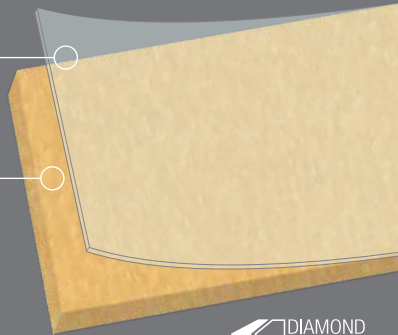
Premium Excelon® Raffia® Stream™

Diamond 10® Technology— cultured diamond-infused coating

- Provides a protective coating to reduce cost of ownership

Through-Color/Pattern Wear Layer

- Pattern/color wear performance:
 - High durability
 - Gouge resistance
 - Rolling load impact resistance
 - Appearance retention



Premium Excelon® Raffia® Stream™
with Diamond 10® Technology
Z5900 avalanche; Z5923 dark sky



VINYL COMPOSITION TILE

Premium Excelon® Raffia® Stream™



Z5900
avalanche



12 in. x 24 in.

Z5929
blizzard



12 in. x 24 in.

Z5930
opal



12 in. x 24 in.

Z5927
dust



12 in. x 24 in.

Z5924
equinox



12 in. x 24 in.

Z5940
horizon



12 in. x 24 in.

Z5926
earth



12 in. x 24 in.

Z5901
rain



12 in. x 24 in.

Z5935
jade



12 in. x 24 in.

Z5934
moonlight



12 in. x 24 in.

Z5922
thunderstorm



12 in. x 24 in.

Z5923
dark sky



12 in. x 24 in.

Z5921
shamrock



12 in. x 24 in.

Z5937
electricity



12 in. x 24 in.

Z5933
grey cloud



12 in. x 24 in.

Z5928
winter solstice



12 in. x 24 in.

Z5920
solar



12 in. x 24 in.

Z5938
flame



12 in. x 24 in.

Completing Your Specification

Armstrong Flooring has a solution for all your commercial spaces beyond flooring — with finishing touches to complete your job — like Adhesives, Wall Base, Stair Treads, Transition Strips and Maintenance products. Go to ArmstrongFlooring.com to view our complete line.

Limited Warranty

FAST START® FACTORY FINISH - 5 YEAR

Commercial Warranty when installed in strict accordance with the recommended Armstrong® Flooring adhesive and detailed instructions at ArmstrongFlooring.com. **Plus, 10 Additional Years** of overall warranty coverage by using any Strong System™ subfloor preparation product.

DIAMOND 10® TECHNOLOGY - 10 YEAR

Commercial Warranty when installed in strict accordance with the recommended Armstrong® Flooring adhesive and detailed instructions at ArmstrongFlooring.com. **Plus, 10 Additional Years** of overall warranty coverage by using any Strong System™ subfloor preparation product.

ArmstrongFlooring.com/commercial | 1 888 276 7876



Made in USA with global and domestic content.



*Exception Recycled Content



Get Inspired.



FP7440F8684-720

© 2020 AFI Licensing LLC

Armstrong® and Armstrong Logo are trademarks of AWI Licensing LLC. FloorScore® is a registered trademark of the Resilient Floor Covering Institute. All other marks are trademarks of Armstrong Flooring, Inc., or its subsidiaries.

Colors pictured in this brochure are as accurate as possible but may not be identical to the actual product due to the printing process. For true color representation, order product samples before specifying.

Standard Excelon®
Imperial® Texture
51910 classic black; 57518 white out;
57532 grayson; 57538 heat wave;
57541 hay blue; 57548 cypress