



LED DOWNLIGHT WITH JUNCTION BOX

► **DESIGN** - LED DOWNLIGHT WITH JUNCTION BOX has a classic, low-profile design with a baffle trim that allows you to have a stylish look with efficient lighting. The integrated J-box and spring-loaded clips make your installation process quick and easy. The acrylic lens with a 110° beam angle and CRI90+ grants you even light. It is designed to operate on 120V circuits.

► **COLOR SELECTABLE** - You can choose either a 2,700K soft white, 3,000K warm white, 3,500K neutral white, 4,000K cool white, or 5,000K daylight color temperature.

► **DIMMING** - Smooth triac dimming capabilities ranging from 10% to 100% with modern LED dimmers allow you to control the look and feel of your space.

► **INSTALLATION** - This fixture is IC rated so there is no can or any other housing required. It is also Wet Locations rated, making it perfect for kitchen, bathroom or any other common areas.

► **ADVANTAGES** - With a lifespan of 54,000 hours, these fixtures are made to last decades under normal operation! ASD provides a 5-year limited warranty along with UL and Energy Star certifications to guarantee top quality products and safety!

Catalog number	
Notes	
Type	



Model	Size	Watts	Voltage	Dimmable	Lumens	CCT	Finish	Dimensions (LxH)	Type
LDLOBR ROUND									
ASD-LDLOBR-4D10AC-WH	4 inch	10W	120 V	TRIAC	650/701/704/709/695 lm	5CCT (2,700/3,000/3,500/4,000/5,000 K)	White	5-1/16" x 3-1/8"	Round
ASD-LDLOBR-4D10AC-WH-6PACK	4 inch	10W	120 V	TRIAC	650/701/704/709/695 lm	5CCT (2,700/3,000/3,500/4,000/5,000 K)	White	5-1/16" x 3-1/8"	Round
ASD-LDLOBR-6D15AC-WH	6 inch	15W	120 V	TRIAC	1,000/1,048/1,053/1,067/1,028 lm	5CCT (2,700/3,000/3,500/4,000/5,000 K)	White	7-5/16" x 3-1/4"	Round
ASD-LDLOBR-6D15AC-WH-6PACK	6 inch	15W	120 V	TRIAC	1,000/1,048/1,053/1,067/1,028 lm	5CCT (2,700/3,000/3,500/4,000/5,000 K)	White	7-5/16" x 3-1/8"	Round
LDLOBS SQUARE									
ASD-LDLOBS-4D10AC-WH	4 inch	10W	120 V	TRIAC	650/688/688/699/722 lm	5CCT (2,700/3,000/3,500/4,000/5,000 K)	White	5" x 3-1/8"	Square
ASD-LDLOBS-4D10AC-WH-6PACK	4 inch	10W	120 V	TRIAC	650/688/688/699/722 lm	5CCT (2,700/3,000/3,500/4,000/5,000 K)	White	5" x 3-1/8"	Square
ASD-LDLOBS-6D15AC-WH	6 inch	15W	120 V	TRIAC	1,000/1,024/1,061/1,072/1,085 lm	5CCT (2,700/3,000/3,500/4,000/5,000 K)	White	7-5/16" x 3-3/8"	Square
ASD-LDLOBS-6D15AC-WH-6PACK	6 inch	15W	120 V	TRIAC	1,000/1,024/1,061/1,072/1,085 lm	5CCT (2,700/3,000/3,500/4,000/5,000 K)	White	7-5/16" x 3-3/8"	Square

ORDERING INFORMATION

Model	UPC	Pcs. per carton	Carton size	Carton weight	GTIN 14
LDLOBR ROUND					
ASD-LDLOBR-4D10AC-WH	810050736657	12	11.2" x 10.4" x 11.2"	5.5 lb	10810050736654
ASD-LDLOBR-4D10AC-WH-6PACK	810050738644	2	11.6" x 11.2" x 13.8"	7.7 lb	10810050738641
ASD-LDLOBR-6D15AC-WH	810050736664	12	15.7" x 10.8" x 15.7"	8.8 lb	10810050736661
ASD-LDLOBR-6D15AC-WH-6PACK	810050738651	2	16.5" x 15.6" x 8"	9.7 lb	10810050738658
LDLOBS SQUARE					
ASD-LDLOBS-4D10AC-WH	810050736671	12	11.8" x 10.6" x 11"	8.2 lb	10810050736678
ASD-LDLOBS-4D10AC-WH-6PACK	810050738668	2	12.4" x 11.2" x 13.4"	9.5 lb	10810050738665
ASD-LDLOBS-6D15AC-WH	810050736688	12	16.3" x 11" x 15.9"	11.5 lb	10810050736685
ASD-LDLOBS-6D15AC-WH-6PACK	810050738675	2	16.5" x 15.6" x 8"	13.2 lb	10810050738672

For most up-to-date spec sheets please refer to asd-lighting.com

ASD LIGHTING CORP

E-mail: orders@asd-lighting.com | Web site: www.asd-lighting.com





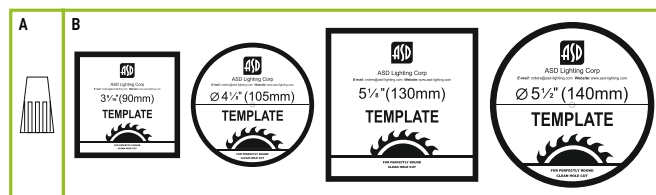
LED DOWNLIGHT WITH JUNCTION BOX

PRODUCT SPECIFICATIONS:

Construction & Materials				
Housing	Aluminum			
Lens	PC			
Finish	White			
Weight	ASD-LDLOBR-4D10AC-WH	0.3 lb (0.1 kg)	ASD-LDLOBS-4D10AC-WH	0.5 lb (0.2 kg)
	ASD-LDLOBR-4D10AC-WH-6PACK	2.6 lb (1.2 kg)	ASD-LDLOBS-4D10AC-WH-6PACK	3.5 lb (1.6 kg)
	ASD-LDLOBR-6D15AC-WH	0.5 lb (0.2 kg)	ASD-LDLOBS-6D15AC-WH	0.7 lb (0.3 kg)
	ASD-LDLOBR-6D15AC-WH-6PACK	4 lb (1.8 kg)	ASD-LDLOBS-6D15AC-WH-6PACK	5.1 lb (2.3 kg)
Environmental system				
Work environment	Suitable for Wet Locations			
Operating temperature	-4°F to 104°F (-20°C to 40°C)			
L-70 Life	> 54,000 hrs			
Optical system				
Luminous flux	ASD-LDLOBR-4D10AC-WH	650/701/704/709/695 lm	ASD-LDLOBS-4D10AC-WH	650/688/688/699/722 lm
	ASD-LDLOBR-4D10AC-WH-6PACK		ASD-LDLOBS-4D10AC-WH-6PACK	
	ASD-LDLOBR-6D15AC-WH	1,000/1,048/1,053/1,067/1,028 lm	ASD-LDLOBS-6D15AC-WH	1,000/1,024/1,061/1,072/1,085 lm
	ASD-LDLOBR-6D15AC-WH-6PACK		ASD-LDLOBS-6D15AC-WH-6PACK	
Color temperature	5CCT (2,700/3,000/3,500/4,000/5,000 K)			
CRI	> 90			
Electrical system				
Input voltage	120 V			
Max input current	ASD-LDLOBR-4D10AC-WH	0.1 A	ASD-LDLOBS-4D10AC-WH	0.1 A
	ASD-LDLOBR-4D10AC-WH-6PACK		ASD-LDLOBS-4D10AC-WH-6PACK	
	ASD-LDLOBR-6D15AC-WH	0.125 A	ASD-LDLOBS-6D15AC-WH	0.125 A
	ASD-LDLOBR-6D15AC-WH-6PACK		ASD-LDLOBS-6D15AC-WH-6PACK	
Inrush current (Action time)	40 A (0.2 S)			
Off state power	0W			
Power consumption	ASD-LDLOBR-4D10AC-WH	10W	ASD-LDLOBS-4D10AC-WH	10W
	ASD-LDLOBR-4D10AC-WH-6PACK		ASD-LDLOBS-4D10AC-WH-6PACK	
	ASD-LDLOBR-6D15AC-WH	15W	ASD-LDLOBS-6D15AC-WH	15W
	ASD-LDLOBR-6D15AC-WH-6PACK		ASD-LDLOBS-6D15AC-WH-6PACK	
Power factor	> 0.9			
Output voltage	ASD-LDLOBR-4D10AC-WH	135 V	ASD-LDLOBS-4D10AC-WH	135 V
	ASD-LDLOBR-4D10AC-WH-6PACK		ASD-LDLOBS-4D10AC-WH-6PACK	
	ASD-LDLOBR-6D15AC-WH	120 V	ASD-LDLOBS-6D15AC-WH	120 V
	ASD-LDLOBR-6D15AC-WH-6PACK		ASD-LDLOBS-6D15AC-WH-6PACK	
Max output current	ASD-LDLOBR-4D10AC-WH	0.065 A	ASD-LDLOBS-4D10AC-WH	0.065 A
	ASD-LDLOBR-4D10AC-WH-6PACK		ASD-LDLOBS-4D10AC-WH-6PACK	
	ASD-LDLOBR-6D15AC-WH	0.115 A	ASD-LDLOBS-6D15AC-WH	0.115 A
	ASD-LDLOBR-6D15AC-WH-6PACK		ASD-LDLOBS-6D15AC-WH-6PACK	
Surge protection DM/CM	2.5 kV / 2.5 kV			
Dimming range				
10-100%				
Dimming compatible controls				
Brand	Lutron		Leviton	
Models	DVWL-153PH-LA	CT-600PR-WH	DSL06-1TW	
	DVW-603PGH-WH	CT-103PR-WH	DB33K1	
	CTCL-153PDH-WH	SLV-600P-WH	1A2305	
	MACL-153MR-WH	DVLV-603P-IV	6633-P	
	CTCL-153PDH-LA	DV-600P	IPL06	
	CTCL-153PR-WH	NT-1000	6683	
	MACL-153M-WH	S-603P	6674	
	DVCL-153P-WH	S-600P	6672	
	SCL-153PR-WH	4X603	6631	
	CTCL-150H-WH			
Regular and voluntary certifications				
5-year limited warranty				
Energy Star listed				
UL certified E473854				

PACKAGE CONTENTS:

Description	Q-ty
LED Downlight with junction box	1 (6 for 6 pack)
Wire nut (A)	3
Template for 4 inch or 6 inch (B)	1
Box	1



For most up-to-date spec sheets please refer to asd-lighting.com



LED DOWNLIGHT WITH JUNCTION BOX

INSTALLATION GUIDE

IMPORTANT SAFETY INFORMATION:

Please read all the instructions below before installation.

- ▶ Make sure that the supply voltage corresponds to the rated product voltage.
- ▶ The product must be installed by a qualified electrician in accordance with the National Electrical Code and corresponding local codes.
- ▶ If the product is damaged, do not use it.

⚠ WARNING

RISK OF PERSONAL INJURY – READ and follow all WARNINGS and installation instructions. Keep or give to the owner for future reference.

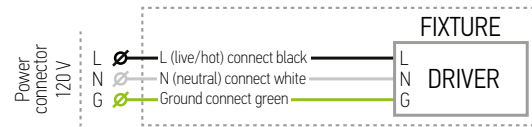
Risk of cuts: Wear gloves to prevent cuts or abrasions when removing from carton, handling, installing, and maintaining this product.

Risk of electric shock: This product must be installed in accordance with the applicable installation code by a person familiar with the construction and operation of the product and the hazards involved.

Risk of Fire: Minimum 194°F supply conductors. Consult a qualified electrician to ensure correct branch circuit conductor.

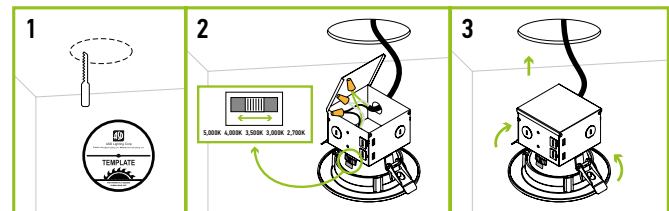
ASD® assumes no responsibility for claims arising out of improper or careless installation or handling of this product.

ELECTRICAL SCHEMATIC DIAGRAM:



INSTALLATION STEPS:

1. Use template to cut an appropriate sized hole.
2. Choose preferred color temperature by adjusting the switch. Open the junction box. Connect the wires: Black to Black, White to White, Green to Green. Secure the connection with wire nuts. Tuck all the wires back into junction box and close it.
3. Push the spring loaded clips upwards and insert the fixture base into the mounting hole. Release the clips and the fixture will be "pulled" into place against the ceiling. Once assembly is complete, turn the power on to ensure the fixture is operating properly.



For most up-to-date spec sheets please refer to asd-lighting.com