

PLEWSTM LubriMatic

Lubricants & Lubrication Equipment



- Greases & Oils
- Grease Guns & Pumps
- Filter Wrenches
- Funnels & Measures
- Fittings & Accessories
- Oilers

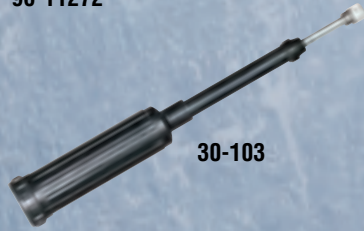
Merchandisers / Grease Guns



96-11272



30-100



30-103



30-132
30-132CC
30-132-07



30-191



30-190



30-192

Table of Contents

Merchandisers	2
Grease Guns	3-4
Grease Gun Accessories	5-7
Pumps	7-10
Oilers	11
Adhesive Guns	12
Filter Wrenches	12-14
Funnels	14-16
Measures	16
Containers	17
Lift Drains	18
Fillers	19
Grease Fitting Tools	20
Grease Fittings	20-21
Greases	22-25
Oils	26-33
Reference Guides	34

Merchandisers

Gravity Feed Grease Cartridge Dispenser

Made to peg hook or set on shelf or counter. Will hold up to 20 14 oz. cartridges of grease (not included).

96-11272 1 per master.

Mini / Midget Grease Guns

Economy Mini Grease Gun

Small, versatile grease gun allows for front or top pipe placement. Barrel takes 3 oz. grease cartridge or can be suction loaded. Includes 5-1/2" straight pipe and standard duty coupler.

30-100 Individually clamshelled. 5 per case cut carton.

Disposable Grease Gun

Just right for the small jobs. Unit is pre-filled with 65 grams of Multi-Purpose Lithium grease and is refillable. Easy, convenient one-hand operation. A simple push delivers the grease. Long narrow tip gets into tight areas conventional grease guns can't. Equipped with centering tip to keep the gun on the fitting, preventing slippage.

30-103 Individually carded. 5 per case cut carton.

General Purpose Mini Grease Gun Kits

A compact, "tool box" size grease gun perfect for hard-to-reach jobs. Ideal for do-it-yourself automotive, industrial, farm, RV and marine applications. Includes zinc die-cast head cap and pistol grip for easy one hand operation and 3 oz. cartridge of LubriMatic® grease. Develops up to 3,600 psi.

30-132 With 3-1/2" pipe and coupler and LubriMatic Multi-Purpose Grease. 10 per master.

30-132CC Case-cut box. 5 per master.

30-132-07 Gun only. Bulk packaged. 20 per master.

30-191 With 3-1/2" pipe and coupler and LubriMatic Marine Corrosion Control and Trailer Wheel Bearing Grease. 10 per master.

Mini / Midget Grease Guns

Heavy Duty Midget Grease Gun Kits

Small, versatile gun allows for front or top pipe placement. Barrel takes 3 oz. grease cartridge or can be suction loaded. Includes push lock plunger, die cast T-handle that locks in place for loading, 5-1/2" straight grease pipe, standard-duty coupler and 3 oz. cartridge of LubriMatic grease. Develops up to 4,500 psi.

30-190 With LubriMatic Marine Corrosion Control and Trailer Wheel Bearing Grease. 10 per master. (shown on pg. 2)

30-192 With LubriMatic Multi-Purpose Lithium Grease. 10 per master. (shown on pg. 2)

30-193 Gun only. Bulk packaged. 25 per master.

Lever Grease Guns

Standard Duty Grease Gun

Ideal for household and do-it-yourself automotive use. Uses standard 14 oz. cartridge. Develops up to 6,000 psi. Delivers 1 oz. of grease/40 strokes.

30-200 Individually boxed. 5 per master.

30-449 Polybagged. 10 per master.

Industrial Grease Gun

Made for the punishing day-in and day-out service required by industrial customers. Variable/short stroke for easy use in confined areas. Rugged fully zinc-plated finish. Dual port head cap with bulk loader fitting for 3-way loading: 14 oz. cartridge, bulk or suction. 5-3/8" pipe and coupler. Plated lever with comfortable oversized grip. Develops up to 10,000 psi. Delivers 1.8 oz./40 strokes.

30-465 Individually boxed. 5 per master.

Professional Grease Gun

Our heavy-duty grease gun for automotive professionals. Variable/short stroke for easy use in confined areas. Air bleeder and bulk loader fitting for 3-way loading: 14 oz. cartridge, bulk or suction. 5-3/8" pipe and coupler. Plated lever with comfortable oversized grip. Develops up to 10,000 psi and delivers 1.8 oz./40 strokes.

30-475 Individually boxed. 5 per master.

The Ultimate® Grease Gun

Equipped with 10" grease pipe, HD coupler, longer lever, barrel and lever comfort grips, air bleeder valve, bulk loader fitting, variable stroke and 3-way loading: 14 oz. cartridge, bulk or suction. Develops up to 10,000 psi, delivers 3.33 oz./40 strokes. Built to take extreme punishment.

30-480 Individually boxed. 5 per master.

Pistol Grease Guns

Standard Duty Pistol Grease Gun

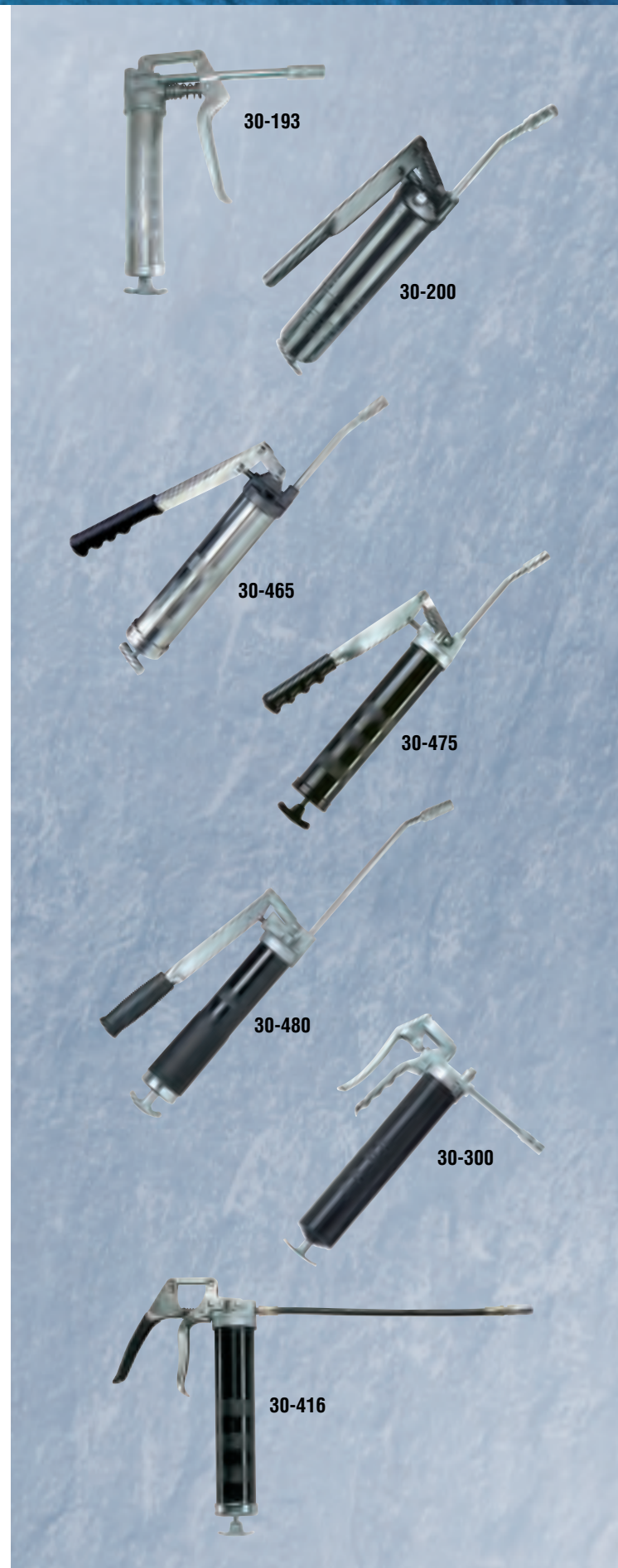
Easy one-hand operation. 2-way loading: 14 oz. cartridge or bulk load. Head cap port for adding air bleeder or bulk loader fitting. Delivers up to 5,000 PSI. Equipped with 3-1/2" grease pipe and coupler.

30-300 Individually boxed. 5 per carton.

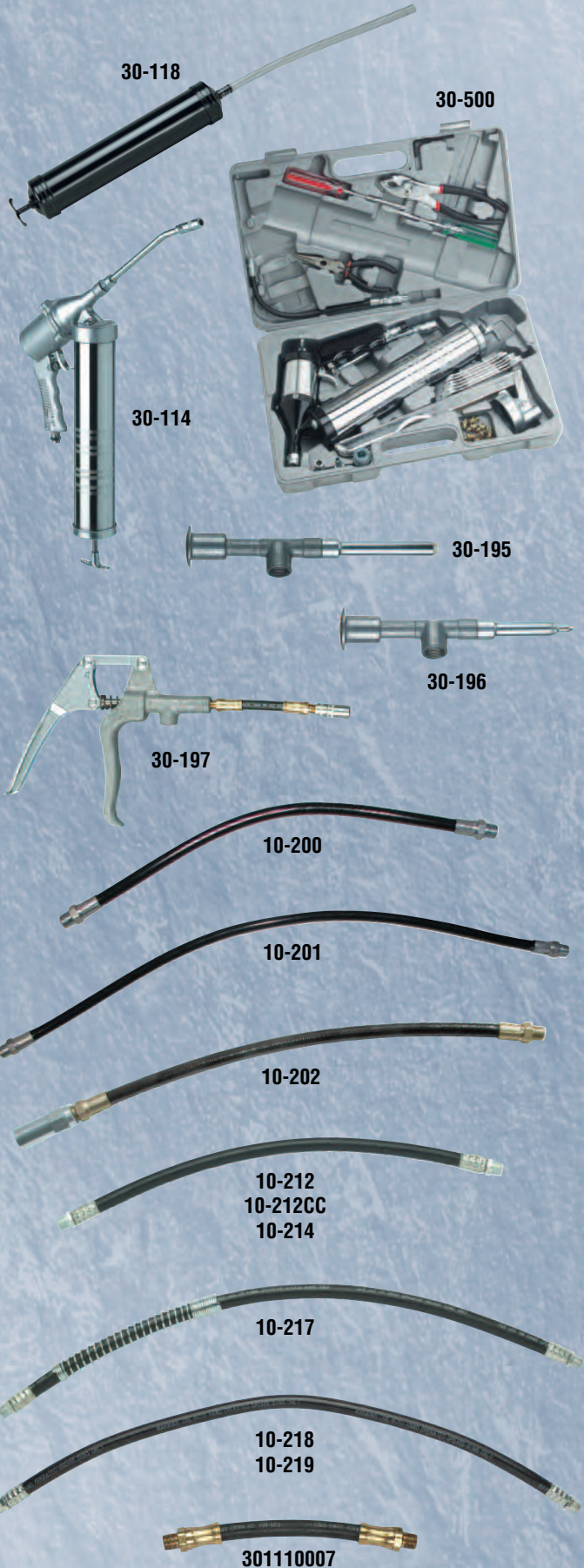
Professional Pistol Grease Guns

Features variable stroke for use in tight places. 3-way loading: 14 oz. cartridge, bulk or suction. Includes air bleeder valve and bulk loader fitting. Develops up to 7,000 psi. Delivers 1 oz./40 strokes.

30-416 Includes 18" flex hose and vinyl handle grip. 5 per master.



Grease Guns / Grease Hoses



Suction Grease Gun

Suction Gun

Designed for draining and filling non-corrosive liquids. Barrel holds approximately one pint with 9" stroke. Features 12" plastic hose and durable corrosion resistant finish.

30-118 10 per master.

Air Operated Grease Guns

Continuous Flow Air Operated Grease Gun

Continuously pumps grease while trigger is depressed. Delivers up to 6,000 psi. Head cap port for adding air bleeder valve or bulk loader fitting. Capable of 3-way loading: 14 oz. cartridge, bulk or suction. Recommended inlet pressure – 90 psi.

30-114 10 per master.

Air Operated Grease Gun Combo Kit

Everything you need in one kit! Features continuous flow air operated grease gun with special "butterfly-lock" screw that enables grip handle to rotate 360° for working in confined areas. 3-Way loading: 14 oz. cartridge, bulk or suction. Delivers up to 6,000 psi. Recommended inlet pressure – 90 psi. Also includes lever gun head cap for converting to manual operation. Kit includes 28 items in all pliers, screwdrivers, wrenches and more. Ideal for the shop, farm and work site.

30-500 Complete with carrying case. 1 per master.

Miscellaneous Grease Guns

Jiffy Luber® Handi Gun

Designed for quick grease jobs. Squeeze tubes (not included) fit into zinc die cast body for easy dispensing. Includes 2-11/16" pipe.

30-195 With plastic push-type adapter. Bulk packaged. 10 per master.

30-196 With needle tip. Bulk packaged. 10 per master.

Handi-Grip Pistol Luber®

All-purpose gun attaches to handy squeeze tubes of grease (not included). Includes spring-returned plated steel lever, zinc die cast body, riveted plated steel link and standard duty coupler.

30-197 With 5-1/2" flex hose. 10 per master.

Flexible Grease Hoses

Economy Flexible Grease Hoses

For use on hand operated grease guns only. 1/8" NPT male fittings on each end. Recommended working pressure is 3,000 PSI.

10-200 12" length. Carded. 10 per master.

10-201 18" length. Carded. 10 per master.

10-202 Same as 10-200 with standard coupler.

Standard Duty Flexible Grease Hoses

For use on hand operated grease guns only. Steel 1/8" NPT male fittings on each end. Recommended working pressure is 5,000 psi.

10-212 12" length. Carded. 10 per master.

10-212CC Same as 10-212. Case-cut box. 10 per master.

10-214 12" length. Bulk packaged. 10 per master.

10-217 18" length with Spring. Carded. 10 per master.

10-218 18" length. Bulk packaged. 10 per master.

10-219 18" length. Carded. 10 per master.

301110007 6" length with Heavy Duty brass end fittings. Bulk packaged. 200 per master.

Flexible Grease Hoses (cont'd)

Flexible Grease Hoses for Air Operated Equipment

Heavy duty, double steel braided, high quality rubber grease hose with bend restrictor for air operated systems. 1/8" NPT male fittings on each end. Recommended working pressure is 8,000 psi.

10-513 12" length. Carded. 10 per master.

10-514 18" length. Carded. 10 per master.

10-536 (not shown) 36" length. Bulk packaged. 12 per master.

Grease Pipes

5-3/8" Curved Grease Pipe

Standard length pipe with 1/8" pipe thread on each end. 30° angle.

05-061 Carded. 10 per master.

10" Curved Grease Pipe

Extra long pipe with 1/8" pipe thread on each end. 30° angle.

05-063 Carded. 10 per master.

5-1/2" Straight Grease Pipe

Standard length straight pipe with 1/8" pipe thread on each end.

05-066 Carded. 10 per master.

Couplers (for hand operated grease guns only)

Standard Coupler

Standard jaw-type coupler features spring loaded ball check valve. Fits all 1/8" NPT threads. For hand operated lube equipment only. Recommended working pressure is 4,500 psi.

05-031 Carded. 10 per master.

05-031C Same as 05-031 in case-cut box. 6 per master.

05-028 Same as 05-031. Bulk packaged. 10 per master.

05-030 Same as 05-031. Bulk packaged. 100 per master.

Heavy Duty Coupler

For hand operated grease guns only. Recommended working pressure is 6,000 psi. All steel construction. Fits all 1/8" NPT threads.

05-035 Carded. 10 per master.

05-034 Bulk packaged. 10 per master.

90° Grease Coupler Adapter

For hard to reach grease fittings on cars, trucks and equipment. Ideal for lubrication of late model front wheel drive vehicles. Complete with both small and large sleeves to fit all standard couplers. For hand operated grease guns only. Recommended working pressure is 4,500 psi.

05-059 Carded. 5 per master.

180° Swivel Coupler

Designed to lock at any angle up to 180°. Spring loaded sleeve locks coupler in place for straight applications or slides back for angular application. Has 8" overall length and corrosion-resistant finish. For hand operated grease guns only. Recommended working pressure is 3,000 psi.

05-050 Carded. 10 per master.

360° Swivel Fitting

Swivels in a full 360° circle and locks in place. 45° angle gives easy access to most grease fittings. Comes with 05-028 standard grease coupler and 1/8" female inlet for extension pipe. For hand operated grease guns only. Recommended working pressure is 4,500 psi.

05-057 Carded. 5 per master.



Grease Gun Accessories



05-036
05-038



05-052



05-048



05-049



05-037
05-037CC



05-042



05-041



05-045



05-019



05-025

Couplers (for air operated equipment)

Heavy Duty Coupler

Designed for use with air powered equipment as well as hand guns. Heavy-duty construction withstands higher pressures. Three hardened jaws reverse for longer coupler life. 2" long coupler with 11/16" diameter is tapped for 1/8" pipe threads. Recommended working pressure is 8,000 psi.

05-036 Carded. 10 per master.

05-038 Bulk packaged. 25 per master.

360° Heavy-Duty Swivel Coupler

Swivels in full 360° circle and locks in place. 45° angle gives easy access to most grease fittings. 1/8" NPT female inlet. For use with air operated equipment. Recommended working pressure is 6,000 psi.

05-052 Carded. 5 per master.

Button Head Fitting Coupler

Specially designed for button head grease fittings. 1/8" NPT female inlet. Zinc-plated steel.

05-048 For 5/8" button head fittings. Carded. 5 per master.

05-049 For 7/8" button head fittings. Carded. 5 per master.

Adapters, Needles & Dispensers

Grease Injector Needle

Lubricates in very tight places such as universal joints and sealed bearings. Stainless steel 18 gauge x 1-1/2" long needle. Equipped with standard grease fitting and protective plastic holder. For hand operated grease guns only.

05-037 Carded. 10 per master.

05-037CC Same as 05-037 in case-cut box. 6 per master.

Seal-Off Dispenser

Use for lubricating cars with grease plugs. Oil and grease resistant rubber tip. 1/8" female NPT. Use with grease gun extension or hose. For hand operated grease guns only.

05-041 Carded. 10 per master.

Needle Tip Adapter

For chain saws, universal joints, bicycles, etc. For hand operated grease guns only.

05-042 Carded. 10 per master.

Needle Nose Dispenser

Dispenses a fine line of grease through needle nose. 3/4" adapter with 1/8" female NPT. Use with extension or hose. 19/32" needle length .046" tip diameter and .219" body diameter. For hand operated grease guns only.

05-045 Carded. 10 per master.

Professional Narrow Needle Nose Dispenser

Hardened steel tip and 1-1/2" length dispenses a fine line of grease. Ideal for hard-to-reach jobs. .046" tip diameter and .156" body diameter. For hand operated grease guns only. 1/8" NPT female.

05-019 Carded. 10 per master.

4" Needle Nose Adapter

Perfect for use on trucks, vans and RVs. For converting jaw-type lube couplers to steel needle points. Dispenses fine line of grease through the needle nose. Includes both small and large sleeves to fit all standard couplers. Overall length 7-1/8", tip diameter .046", body diameter .250". For hand operated grease guns only.

05-025 Carded. 10 per master.

Grease Gun Accessories

Air Bleeder Valve

Quickly vents air pockets in grease guns. Zinc plated, easy to use. 1/8" NPT male fitting.

05-039 Carded. 10 per master.

Grease Gun Loader Fittings

Use in grease gun heads for bulk loading.

Zinc plated 1/8" NPT male fitting.

05-047 0.596" OD (Plews/LubriMatic). Carded. 10 per master.

Grease Gun Holder

Designed for wall mounting with 2 screws (not included).

Center latch locks. Corrosion-resistant finish.

70-901 Carded. 5 per master.

70-902 Bulk packaged. 25 per master.

Bearing Packers

Deluxe Bearing Packer

For use with either hand operated or power lube equipment.

Threaded center post for positive locking of wheel bearing.

For bearings having a minimum ID of 1/2" to maximum OD of 5", height of 1/4" to 2". Rugged steel construction.

70-025 Carded. 10 per master.

Grease Pump Bearing Packer

Hand operated, portable bearing packer. Ideal for packing several bearings in a short amount of time. For all car, boat, trailer and RV bearings having a minimum ID of 1/2" to a maximum OD of 5". Height of 1/4" to 2". Rugged steel construction. Fits 35 – 50 lb. standard grease containers. Includes follower plate.

55-107 For 5 gallon plastic pails.

Grease Gun Filler Pumps

Includes filler adapter (0.596" ID) for bulk loading grease guns. Equipped with follower plate, pail cover and filler adapter cap to prevent grease contamination.

55-117 Fits 35 – 50 lb./5 gallon plastic pail.

Bottle Pumps

Ideal for adding oil and other fluids to small engines and marine lower units. Flexible hose for hard-to-reach fill plugs. Quart sized.

55-001 4 cc Pump. Clamshell packaged. 12 per master.

55-001CC Same as 55-001. Case-cut box. 5 per master.

* **55-005** 4 cc Pump and 3/8"-16 swivel metal marine filler fitting. Clamshell packaged. 6 per master.

* **55-007** 4 cc Pump and 3/8"-16 plastic marine filler fitting. Bagged. 12 per master.

* Adapter included with pump fits Mercruiser, Mercury, OMC, Evinrude, Johnson, Volvo, Force, Gamefisher, and Honda (70 hp and up) models.

Marine Lower Unit Adapter Fittings (not shown)

Adapts 55-005, 55-007, 55-008 and 55-011 for various lower units.

55-012 For Tohatsu, Nissan and Honda (2 – 50 hp) lower units. 8 mm x 1.25" thread. Carded. 5 per master.

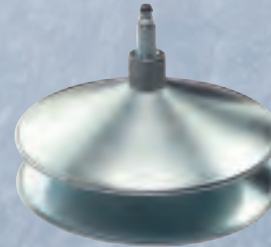
55-013 For Suzuki lower units. 10 mm x 1.25" thread. Carded. 5 per master.



05-039



05-047



70-025



70-901
70-902



55-107



55-117



55-001
55-001CC



55-005



55-007



55-008
55-009
55-010



55-440



55-011



55-441



55-303



55-200



30-108

Lube Tubes

Marine lower unit drain, flush and fill tool. Quick, easy and clean way to change marine lower unit gear lube. For use with all 8 and 10 oz. squeeze tubes. 10 per master.

55-008 For Mercruiser, OMC, Evinrude, Johnson, Force, Gamefisher and Honda (70 hp and up) models. 3/8"-16 thread. Carded.

55-009 For Suzuki models. 10 mm x 1.25" thread. Carded.

55-010 For Yamaha, Nissan, Tohatsu and Honda (2 – 50 hp) models. 8 mm x 1.25" thread. Carded.

Fluid Lubricant Pumps

Lever Action Dispenser

For transfer of transmission, differential and heavier oils. Self priming. Delivers 3 oz. per stroke. Complete with 4 ft. oil-resistant hose and drum pail cover. Fits open head pails/drums.

55-440 For 5 gallon/35 lb. pail.

55-441 For 16 gallon/120 lb. pail.

Marine Lower Unit Pail Pump

For bulk filling of marine lower units and stern drives. Delivers 3 oz. per stroke. Complete with threaded fitting for domestic standard lower units. Fill adapters for other engines available (see 55-012 and 55-013, page 7).

55-011 Fits 5 gallon/35 lb. pail.

Rotary Barrel Pumps

For transferring non-corrosive petroleum-based fluids of light to medium viscosity. For industrial, commercial, automotive and agricultural applications. Single direction 2-vane pump with rugged cast iron housing and 42" steel suction pipe. Individually boxed.

55-303 Transfers approximately 1 gal./18 revolutions with SAE 10 oil.

Replacement Parts (not shown):

99105 Bung adapter with thumb screw for 55-303.

99106 Crank handle for 55-303.

Transfer Pumps

Fuel Transfer Pump

A double-action high volume pump for gasoline, diesel fuel, heating oil and similar petroleum products. 8 ft. fuel-resistant hose with 3/4" fittings. Spark resistant nozzle with steel and aluminum telescoping suction pipe and neoprene seal that permits use from 22" to 39". Delivers approximately one gallon per nine strokes.

55-200 Fits 30 – 55 gallon drum. Individually boxed.

Replacement Parts (not shown):

55-291 Hose assembly, 8 ft. length, 3/4"-14 NPT.

Hand Transfer Pump

Ideal for transfer from one container to another, also for draining oils and other fluids. Hand operated, self priming. Great for farm, home, automotive and factory use. Heavy-duty steel construction with durable VITON® O-rings. 8' vinyl hose (.50" ID x .63" OD) for suction and discharge of fluids up to 90 wt. Double check valve. Delivers approximately 1 gallon per 8 strokes.

30-108 Individually boxed.

Pull-Up Barrel Pumps

Feature die cast head with garden hose threads and 18 gauge steel cylinder. Includes curved metal spout and adapter. Individually boxed.
55-017 Fits 30 – 55 gallon drum.

Lever Operated Barrel Pumps

Heavy Duty Barrel Pump

Two-piece telescoping suction tube fits 30 to 55 gallon drums. Dispenses approximately 10 oz./stroke. Complete with standard bung adapter, tough all-steel foot valve and piston valve.

55-123 With standard garden hose thread discharge spout.

Replacement Parts (not shown):

55-123-03 Bung nut for 55-123.

Professional Barrel Pump

Lever style barrel pump with non-drip spout. Equipped with brass rings and a floating piston design. Self adjusting telescopic suction tube. Designed to pump all lubrication-based fluids, antifreeze, agricultural and industrial non-corrosive fluids. Dispenses approximately 12 oz./stroke. Fits 30 – 55 gallon drum. 5 per master.

55-124 With standard lever handle.

55-125 With multidirectional handle.

Replacement Parts (not shown):

99118 Spout, O-ring, and non-drip end.

99119 Bung, disc, and molded gasket.

99122 Spout, standard.



Pump Application Chart

NOTE: Plews/LubriMatic™ pumps are not recommended for: acetone, ebenezene, cresol acid, ethyl, phenol, methyl ethyl, carbon tetrachloride, caustic soda, or hydrochloric, nitric and sulfuric acids/thinners.

Item No.	Type	Materials to be pumped	Materials not to be pumped
30-108	Hand held transfer pump style Steel construction VITON® O-ring & Vinyl hose	Oil-based fluids	Water-based fluids, Solvents Weak acids, Antifreeze *Gasoline/diesel fuel
55-017	Rod style Steel piston/valves No rubber packing or sleeves	Oil-based fluids Solvents	Water-based fluids Weak acids, Antifreeze *Gasoline/diesel fuel
55-123	Lever style Steel piston /valves	Oil-based fluids	Water-based fluids, Solvents Weak acids, Antifreeze *Gasoline/diesel fuel
55-124 55-125	Lever style Steel piston/brass rings	Oil-based fluids Antifreeze Windshield washer-fluid	Water-based fluids Solvents, Weak acids *Gasoline/diesel fuel
55-200	Diaphragm style Push/pull lever	Oil-based fluids; like heating oil and other petroleum products *Gasoline/diesel fuel	Water-based fluids Solvents, Weak acids
55-303	Rotary style, Cast iron	Oil-based fluids	Water-based fluids, Solvents Weak acids, Antifreeze *Gasoline/diesel fuel

*Gasoline is oil based, however it is explosive and dangerous to pump.

Helpful Hints: Water-based materials attack unplated steel (rust). Solvents attack lubricated parts (breaks down lubricants). Solvents attack rubber parts (dissolves rubber). Acids attack nickel plating and unplated steel (corrosion). Polypropylene and nylon are resistant to some chemicals (see chart above).



Plastic Barrel Pumps

Rotary Barrel Pump

Fits 5 to 55 gallon drums. Ryton® construction with Teflon® seals enable this pump to be used with fuel, water base and acidic solutions. Delivers 7 gallons per 100 revolutions.

55-150 Individually boxed. 1 per master.

Lever Barrel Pumps

Fit 5 to 55 gallon drums. Ideal for fuel, water base and acidic solutions. Individually boxed. 9 oz. per stroke. 1 per master.

55-160 Blue. General purpose.

55-161 Yellow. Standard duty.

55-162 Black. Heavy duty.

Recommended Usage

55-150	Acids, Alkalines, Gas, Diesel, Machine Oil, Water, Alcohol, Thinners & Petroleum-Based Products.
55-160	Water, Alcohol, Gas, Diesel, Kerosene & Petroleum-Based Products.
55-161	Water, Water-Based Chemicals, Alcohol, Kerosene, Gas, Diesel, Petroleum-Based Products, Mild Acid & Mild Alkali Solutions.
55-162	Water, Water-Based Chemicals, Alcohol, Kerosene, Gas, Diesel, Petroleum-Based Products, Strong Acids, Strong Alkali Solutions & Nitric Acid.

Ryton® is a registered trademark of Chevron Phillips Chemical Co.
Teflon® is a registered trademark of DuPont for its brand of fluoropolymer resins.

Pistol Oilers

Epoxy Finish Pistol Oilers

Drawn steel bodies. Rugged epoxy finish resists rust.

Features include:

- 6 oz. size available with or without base holder.
- Rigid spouts have .15" diameter ledge-cone machined tips to lift oil filler dust caps (note: rigid spouts are non-detachable).
- All flex spouts are zinc plated and detachable with a base thread of 1/4"-28.

50-509CC Same as 50-509. Case-cut box. 10 per master.

50-515 6 oz. capacity with base holder and 6" rigid spout. 10 per master.

50-516 6 oz. capacity with base holder and 6" flex spout. 10 per master.

50-573 1 pint capacity with 6" flex spout. 24 per master.

50-583 1 quart capacity with 6" rigid spout. 21 per master.

Plastic Pistol Oiler

50-590 6 oz. capacity with 4-1/2" rigid spout. Case-cut box. 6 per master.

Plastic Oiler

6 oz. capacity with 7-1/2" flexible spout.

50-592 6 per case cut carton.

Economy Pistol Oiler

8 oz. capacity pistol oiler. Easy one-hand operation.

Equipped with 6" flexible spout.

50-595 6 per case cut carton.

Handled Oilers

Epoxy Finish Handled Oilers

Heavy duty, drawn steel bodies. Durable epoxy finish bodies resist rust. Features include:

- Zinc-plated, detachable rigid and flex spouts with 1/2"-20 thread base.
- Rigid spouts have a ledge-cone machined tip to lift oil filler dust caps (note: rigid spouts are non-detachable).
- Flex spout detachable tip threaded 10-32 with closure cap.

50-337 1 pint capacity with 9" flex spout. 5 per master.

50-347 1 quart capacity with 9" flex spout. 24 per master.



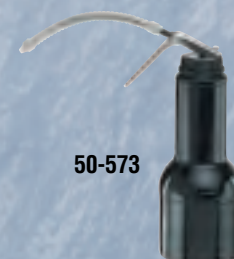
50-509CC



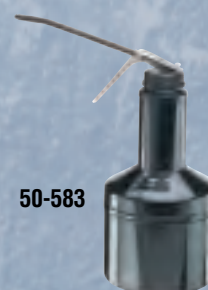
50-515



50-516



50-573



50-583



50-590



50-595



50-592

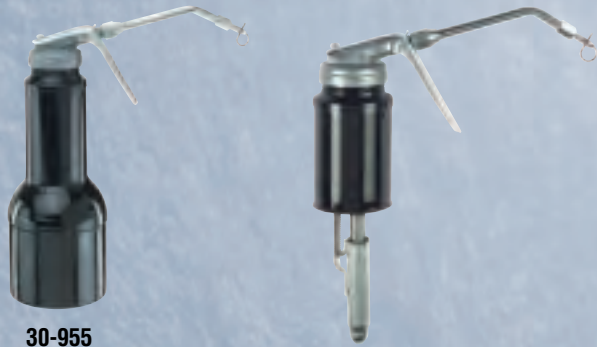


50-337



50-347

Adhesive Guns / Filter Wrenches



30-955

30-960



30-962

70-605
70-607
70-609
70-611



70-521
70-524
70-525
70-527
70-531



70-535
70-536



70-537
70-538
70-539

Adhesive Guns

Features zinc die-cast caps, zinc-plated spouts and heavy duty triggers. Interchangeable, replaceable spouts complete with wire closure tips. Spout tips have 12-32 threads. Spout bases have 3/8"-24 threads. Brush tip available. Durable epoxy finish bodies. Pumps most non-corrosive fluid which will seek its own level. Not recommended for water-based adhesives.

30-955 1 pint with 4" spout. 50 per master.

30-960 1 pint with long adapter. 50 per master.

30-962 6-3/4" pump and adapter. 50 per master.

Replacement Parts (not shown):

98-501 Pump assembly.

99-619 Brush tip.

Handled Filter Wrenches

Pro-Tuff™ Standard Handle Wrenches

Extra heavy duty construction. Features a tough extra wide oil resistant cushioned handle with finger grips for a non-slip grip, and a heavy-duty studded steel band.

70-605 Large, fits 3-1/2" to 3-7/8" (89 – 98 mm) diameter filters. 10 per master.

70-607 Truck, fits 4-1/8" to 4-1/2" (105 – 114 mm) diameter filters. 5 per master.

70-609 Truck/Tractor, fits 4-3/4" to 5-1/8" (120 – 130 mm) diameter filters. 5 per master.

70-611 Tractor, fits 5-3/8" to 5-3/4" (136 – 146 mm) diameter filters. 5 per master.

Economy Cap Style Steel Filter Wrenches

Multi-flute stepped design allows cap wrenches to fit most auto and light truck applications. Use with 3/8" square drive. 4 per master.

70-521 Fits 65 to 67 mm diameter filters with 14 flutes.

70-524 Fits 75 to 77 mm diameter filters with 15 flutes.

70-525 Fits 76 mm diameter filters with 14 flutes.

70-527 Fits 74 to 76 mm diameter filters with 15 flutes.

70-531 Fits 93 mm diameter filters with 15 flutes.

Economy Standard Handled Filter Wrenches

Standard fixed handle with vinyl grip. 6 per master.

70-535 Fits 2-9/16" to 3-1/8" (65 to 79 mm).

70-536 Fits 3-1/2" to 3-7/8" (89 to 98 mm).

Economy Swivel Handled Filter Wrenches

For hard-to-reach jobs. Features a swivel handle with vinyl grip to easily clear obstructions. 6 per master.

70-537 Fits 3-1/2" to 3-7/8" (89 to 98 mm).

70-538 Fits 2-9/16" to 3-1/8" (65 to 79 mm).

70-539 Fits 2-1/4" to 2-1/2" (57 to 63 mm).

Spark Plug Wrench

Swivel design allows quick and easy spark plug placement. Ideal for marine use. 13/16" 6 pt. swivel head and vinyl grip.

70-753 5 per master.

Adjustable Filter Wrenches

Economy Adjustable Filter Wrench

4-way adjustable band fits a wide range of sizes. Wide band prevents crushed filters.

70-805 Fits car and truck, small and large diameter filters from 2-3/4" to 4" (70 – 102 mm). 10 per master.

Swivel Filter Wrenches

Pro-Tuff™ Swivel Handle Wrenches

Extra heavy duty construction with studded steel band. Features a lock nut for setting angles and tightening handle and a tough non-slip grip. These wrenches with their swivel handle design make removing hard-to-reach filters easy.

70-621 Compact, fits 2-1/4" to 2-9/16" (57 – 65 mm) diameter filters. 10 per master.

70-623 Small, fits 2-13/16" to 3-5/32" (71 – 80 mm) diameter filters. 10 per master.

70-625 Large, fits 3-1/2" to 3-7/8" (89 – 98 mm) diameter filters. 10 per master.

70-627 Truck, fits 4-1/8" to 4-1/2" (105 – 114 mm) diameter filters. 5 per master.

Band Filter Wrenches (Ratchet Drive)

Low profile design for easy access to hard-to-reach filters. Heavy duty hardened link and studded steel band. Use with drive extension.

Pro-Tuff™ 3/8" Ratchet Drive

70-635 Small, fits 2-13/16" to 3-5/32" (71 – 80 mm) diameter filters. 10 per master.

70-637 Mid-Size, fits 3" to 3-3/8" (76 – 86 mm) diameter filters. 10 per master.

70-639 Large, fits 3-1/2" to 3-7/8" (89 – 98 mm) diameter filters. 10 per master.

Pro-Tuff™ Heavy Duty Truck 1/2" Ratchet Drive

70-761 Fits 4-1/8" to 4-21/32" (105 – 118 mm) diameter filters. Fits Ford/International 6.9, 7.1 and most Mack engine filters. 5 per master.

70-763 Fits 4-21/32" to 5-5/32" (118 – 131 mm) diameter filters. 5 per master.

70-765 Fits 5-5/32" to 5-21/32" (131 – 143 mm) diameter filters. 1 per master.



70-753



70-805



70-621
70-623
70-625
70-627



70-635
70-637
70-639



70-761
70-763
70-765

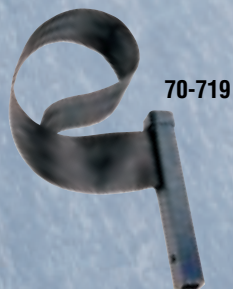
Filter Wrenches / Funnels



70-781
70-783
70-779
70-785



70-746



70-719



70-715



75-001



75-002



75-003



75-004



75-008



75-017

Cap Style Aluminum Filter Wrenches

Multi-flute stepped design allows cap wrenches to fit most auto and light truck applications. High quality cast aluminum construction. Use with 3/8" square drive, 7/8" or 1" open/combination wrench. Compact design fits in places most other wrenches can't. 5 per master.

70-781 Mini, fits 2-27/32" (65 – 68 mm) diameter filters. Two step design fits O.E. and replacement 14 flute oil filters found on Toyota, Chevrolet Nova, Mazda, popular lawn and garden applications, and others.

70-783 Small, fits 3" (74 – 76 mm) diameter filters with 14 or 15 flutes found on many lawn and garden applications.

70-779 Mid-Size, fits most 3-5/32" (80 mm) diameter filters with 15 or 30 flutes.

70-785 Large, fits 3-21/32" (93 mm) diameter filters with 15 or 36 flutes found on many GM, Ford and Chrysler vehicles.

Miscellaneous Filter Wrenches

Pliers-Style Filter Wrench

Comfortable vinyl grips and black oxide finish. Special slip-joint handle. 20° jaw angle and slim pliers design gets into areas other wrenches can't. 5 per master.

70-746 Fits 2-1/2" to 4-5/8" (63 – 116 mm) diameter filters.

Nylon Strap Oil Filter Wrench

Sturdy, non-slip nylon belt with 1/2" square drive.

70-719 Fits filters up to 6". 5 per master.

Bi-Directional Filter Wrenches

Two-way filter wrench removes and installs oil filters. Fits most domestic and imported cars and trucks. Designed to fit where standard wrenches can't. Use with 3/8" square drive or 7/8" open/combination wrench. Patent No. 4,532,835. 5 per master.

70-715 Fits 2-13/16" to 3-5/32" (71 – 80 mm) diameter filters.

Steel Galvanized Funnels

Capacity indicates what the funnels will hold when the outlet is blocked.

75-001 Utility, 1 quart capacity, 7" total height, 7" diameter, 3/4" OD tip. 12 per master.

75-002 Offset, 6 quart capacity, 14" total height, 9" diameter, 1-1/4" OD tip with screen. 6 per master.

75-003 Utility, 2 quart capacity, 8" total height, 8" diameter, 3/4" OD tip. 6 per master.

75-004 Regular tractor, 8 quart capacity, 12" total height, 9-1/2" diameter, 1" OD tip with screen. 6 per master.

75-008 Lock-on tractor, 8 quart capacity, 11-1/2" total height, 10" diameter, 1-1/4" OD tip with screen and tabs. 6 per master.

75-017 7 pint capacity, 8-3/4" total height, 9-3/4" diameter, 3/4" OD tip. 12 per master.

Utility Tin-Coated Funnels

Lightweight, general purpose tin-coated steel funnels. Capacity indicates what the funnel will hold when the outlet is blocked. 12 per master.

75-009 10 oz. capacity, 5-1/2" total height, 4-1/2" diameter, 1/2" OD tip.

75-010 24 oz. capacity, 6-1/2" total height, 5-3/4" diameter, 1/2" OD tip.

75-011 32 oz. capacity, 7-1/2" total height, 6-1/2" diameter, 3/4" OD tip.

75-012 56 oz. capacity, 9" total height, 8" diameter, 1" OD tip.

Funnel Fillers

Transmission Funnel Fillers with Screen

Rugged epoxy finish steel. Offset design, 2 quart capacity. 7" diameter. Includes fine mesh strainer screen. 5 per master.

75-005 With 2" (1" OD) rigid tip.

75-006 With 17" flexible metal extension and 1/2" OD tapered tip to fit transmission tubes, etc., 28" overall length.

Utility Funnel with Screen

The most popular all-purpose fluid dispenser. Ideal for transmission fluid. Galvanized steel. Includes screen and 12" flexible extension with tapered tip.

75-007 1 quart capacity, 5-3/4" funnel diameter, 17-1/2" overall length. 10 per master.

Economy Utility Funnel Filler

Complete with a 13" flexible neoprene hose. 1/2" OD tip.

75-101 1/2 pint capacity, 4-1/2" diameter, 17" overall length. 10 per master.

Plastic Funnels

Economy Utility Funnels

Durable, oil and gasoline resistant plastic. Safe for all petroleum products, complete with handy storage hanging tabs. Capacity indicates what the funnel will hold when the outlet is blocked.

75-060 8 oz. capacity, 5" total height, 4-1/2" diameter, 1/2" OD tip. 20 per master.

75-062 16 oz. capacity, 5-1/2" total height, 6" diameter, 3/4" OD tip. 24 per master.

75-064 48 oz. capacity, 7" total height, 8" diameter, 1" OD tip. 24 per master.

Polyethylene Plastic Funnels

Rugged, corrosion resistant all purpose funnels. Complete with fine mesh straining screen and handy hanging tab. Capacity indicates what the funnel will hold when the outlet is blocked.

75-070 2 quart capacity, 9" total height, 7" diameter, 1" OD tip. 10 per master.

75-072 6 quart capacity, 11" total height, 9" diameter, 1-1/2" OD tip. 5 per master.

Super Funnel

All-purpose utility funnel. Extra long neck to reach out of the way spots.

75-068 2 quart capacity, 18" overall length, 5" diameter, 1/2" OD tip. 12 per master.



Funnels / Measures



75-074



75-075



60-200

Plastic Funnels (cont'd)

Two-Piece Funnel with Flexible Spout

A multi-purpose two-piece funnel with 12" detachable flexible spout. The funnel includes an easy grip handle.

75-074 15" overall length, 6" diameter with 3/4" OD tip. 12 per master.

3-Piece Funnel Set

75-075 Includes 1/2 pint, 1 pint, 2 pint plastic funnels. 12 per master.

Easy-Pour Flex Spout

Multi-purpose flexible funnel spout for automotive, home, farm, marine and more. Two thread sizes to fit most containers. Screws on to motor oil, antifreeze, windshield washer fluid, and similar plastic containers. Tough plastic construction won't mar or scratch. Complete with stopper cap and hang tab.

60-200 9-1/4" length with 3/4" OD tip. 10 per master.

Galvanized Measures

Deluxe measures with spill proof tops. Angled spouts for ease of pouring. Rolled edge, easy grip handles. Calibrated fill line. Available in both rigid spout width 7/8" OD tip and flexible spout with 1/2" OD tip models. 6 per master.

75-441 Flexible spout, 1 quart capacity, 6-1/2" overall height.

75-442 Flexible spout, 2 quart capacity, 9-1/2" overall height.

75-444 Flexible spout, 4 quart capacity, 11" overall height.

Plastic Measures

Marked in quarts and liters. Easy grip handle. Rigid spout is angled for ease of pouring.

75-451 1 quart capacity. 3/4" OD spout. 10 per master.

75-452 2 quart capacity. 1" OD spout. 10 per master.

75-454 4 quart capacity. 1" OD spout. 10 per master.

75-456 6 quart capacity. 1-1/4" OD spout. 10 per master.

Painted Measures

With flexible spouts. Designed for one hand operation. Thumb operated valve controls flow, flip action locks valve open. 14" flexible metal spout with tapered 1/2" OD tip swings into the necessary angle for hard-to-reach jobs. Recessed bottoms drain fully and guard against puncture. Rolled edge top helps prevent oil spillage. 1 per master.

75-661 Flexible spout, 1 quart capacity, 6-1/2" overall height.

75-662 Flexible spout, 2 quart capacity, 8" overall height.

75-664 Flexible spout, 4 quart capacity, 9-1/2" overall height.

75-665 Flexible spout, 5 quart capacity, 9-1/2" overall height.

75-668 Flexible spout, 8 quart capacity, 11-1/2" overall height.



75-441
75-442
75-444



75-451
75-452
75-454
75-456



75-661



75-662



75-664



75-665



75-668

Galvanized Containers

Radiator Drain Pan

Heavy duty galvanized steel. Pouring with anti-splash baffle prevents spilling. Rolled smooth edge and ribbed bottom for heavy duty strength. Includes handles.

75-750 6 gallon capacity, 19" diameter x 6" high. 2 per master.

Utility Drain Pan

Seamless, full drawn galvanized steel. Rolled rim and ribbed bottom for extra strength.

75-751 3-1/2 gallon capacity, 16" diameter x 4" high. 12 per master.

Drip Pan

Rugged galvanized sheet metal construction. Rust resistant. Protects driveways, garage or automotive show-room floors from fluid drippings. Rolled edges for extra strength.

75-755 Large 17-1/2" x 25-3/4" x 1" high. 10 per master.

Water Pail

Made of rust resistant galvanized sheet metal.

75-825 12 quart capacity, 11" diameter x 9-1/2" high. 6 per master.

Plastic Containers

Tire and Tube Test Tank

Rugged high density polyethylene plastic construction. Large enough to handle passenger car and light duty truck tires. Lip doubles as a splash guard and easy carrying handle. Tire punctures are easy to spot against black plastic tank.

75-754 31" x 12" x 12" size. 1 per master.

Plastic Drain Pan

With pouring lip. Will not rust, dent or scratch, easy cleaning.

75-760 6 quart capacity, 13" diameter x 4" high. 10 per master.

Plastic Drain Pan

Tough polyethylene construction that won't rust, dent or scratch. Pouring spout and handle allows for easy, spill-free pouring. Rolled edge cuts down on splash, makes for ease of carrying while full. Handle can also be used to push pan under vehicle. Easy to clean.

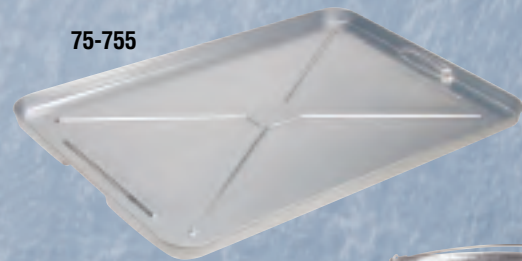
75-762 5 gallon capacity, 18" diameter x 5-1/2" high. 4 per master.



75-750



75-751



75-755



75-825



75-754



75-760



75-762

Lift Drains



Oil Lift Drains

For use with 16 gallon/120 lb. open head drums (**drum not included**). Includes telescopic funnel and tube (adjusts from 40-1/2" to 60"), float assembly, drum cover assembly and heavy duty caster base.

75-835 16 gallon capacity. 1 per master.

Telescopic tube adjusts to desired height from 40-1/2" to 60" with 13-1/2" diameter funnel. Comes complete with heavy duty 5 gallon container, telescopic tube and sturdy funnel.

75-837 5 gallon capacity. 1 per master.

Replacement Parts (not shown):
75-837-02 Upper tube and funnel.

Plastic Oil Lift Drains

Sturdy plastic lift drains equipped with wheels, metal drain tube and drain pan with screen (75-851 includes drain valve). 1 per master.

75-850 8 gallon capacity. Height adjusts from 48" to 63".

75-851 18 gallon capacity. Height adjusts from 55" to 70".

75-853 Replacement tube and funnel assembly.

Oil Lift Drain Accessories (shown on pg. 19)

Lift Drain Dollys

Heavy steel construction with baked enamel finish, ball bearing type swivel casters. All hardware included.

75-834 11-1/2" diameter band type frame fits all standard 5 gallon lubrication drums. 1 per master.

75-835-04 13-1/4" diameter band type frame fits all standard 16 gallon/120 lb. lubrication drums. 1 per master.

75-838 Cross frame style lift drain dolly which fits the Plews/LubriMatic™ 75-837 lift drain. 1 per master.

Transmission Pan Adapter

For lift drains. Heavy duty, high density polyethylene. Small diameter drain holes in bottom of pan prevent loss of pan bolts. Fits all Plews/LubriMatic and other popular lift drains.

75-836 Large 24" diameter size. 6 per master.

Drum Funnel

One piece, 3 quart capacity funnel attaches to 2" bung hole in 15 to 55 gallon drums. Used to fully drain oil bottles, filters, antifreeze or any fluid to be poured and contained in a 15 to 55 gallon drum.

75-849 7-1/2" diameter. 5 per master.

Barrel Funnel Assembly

Handy funnel attaches to 2" bung hole in 15 to 55 gallon drums. Used to fully drain oil bottles, filters, antifreeze or any fluid to be poured and contained in a 15 to 55 gallon drum.

75-839 13-1/2" diameter. 4 per master.

Battery & Radiator Fillers

Plastic Radiator Fillers

Tough polyethylene won't damage automotive finishes. Impervious to oil, gasoline and antifreeze. Will withstand normal temperature extremes. Available in two styles.

75-025 3 gallon capacity. 4 per master.

75-029 2-1/2 gallon capacity. 4 per master.

Professional Battery Filler

Shuts off automatically when battery cell is at proper level, no over filling. Features the double action fast flow valve tip that prevents after-drip. Stops surface discharge caused by a wet battery. Tough, polyethylene. Safe to use with battery acid.

75-030 2 quart capacity. 10 per master.

99-038 Spout tip only. 25 per master.

Syringe Battery Filler

Ideal for all fluids, including battery acid. Rubber bulb remains pliable in cold weather.

75-033 6 oz. capacity with 6" flex spout. 10 per master.

Battery Filler

Includes 16" flexible hose with no-drip hose holder.

75-035 1 gallon capacity. 1 per master.

Siphon Hose

Multi-purpose all rubber siphon hose. Rubber bulb makes it easy to start flow of liquid. Ideal for home, garden, boat, shop or garage. Transfers, drains or pumps all types of liquids including gasoline.

75-847 6 ft. length. 10 per master.



75-838



75-834
75-835-04



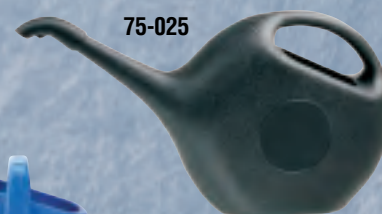
75-836



75-849



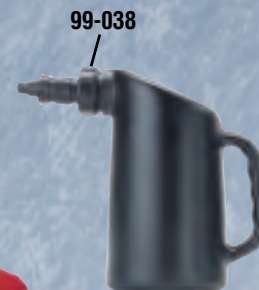
75-839



75-025



75-029



99-038

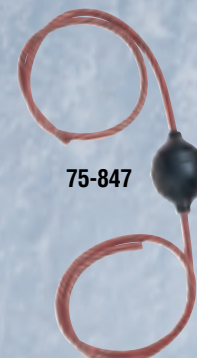
75-030



75-033



75-035



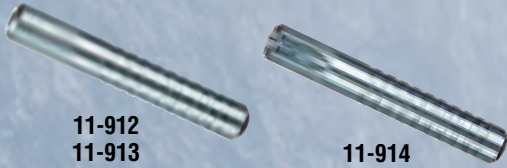
75-847

Grease Fittings



11-902

11-903
11-904



11-912
11-913

11-914
11-915



11-955



11-957



11-960

11-954

11-953

11-951

Grease Fitting Tools

Large 4-Way Grease Fitting Tool

Designed for 1/8" NPT fittings. Tap repairs 1/8" NPT threads. Wrench removes 7/16" and 3/8" hex fittings and plugs. Wrench installs new fittings. 1/8" NPT "Easy-out" removes broken fittings.

11-902 Bulk packaged. 25 per master.

Small 4-Way Grease Fitting Tool

Designed for 1/4"-28 and 6 mm fittings. Tap repairs 1/4"-28 threads. Wrench removes 5/16" and 3/8" hex fittings and plugs. Wrench installs new fittings. 1/4"-28. "Easy-out" removes broken fittings.

11-903 Carded. 10 per master.

11-904 Bulk packaged. 25 per master.

Straight Drive Grease Fitting Tool

For straight drive-in fittings; 4-1/2" long, 11/16" diameter.

11-912 Carded. 5 per master.

11-913 Bulk packaged. 25 per master.

Angled Drive Grease Fitting Tool

For angled drive-in fittings; 4-1/2" long, 11/16" diameter.

11-914 Carded. 5 per master.

11-915 Bulk packaged. 25 per master.

Grease Fitting Assortments

Metric Grease Fitting Assortment - 8 Piece

6 mm x 1 metric fittings on blister card. Includes 4 straight, 2 @ 45° angle and 2 @ 90° angle.

11-957 Carded. 10 per master.

Metric Grease Fitting Assortment - 50 Piece

6 mm x 1 metric fittings packed in transparent box. Includes 30 straight, 10 @ 45° angle and 10 @ 90° angle.

11-960 1 per master.

Standard Grease Fitting Assortment - 8 Piece

1/4" - 28 standard fittings on blister card. Includes 4 straight, 2 @ 45° angle and 2 @ 90° angle.

11-955 Carded. 10 per master.

Pipe Thread Fitting Assortment - 50 Piece

1/8" grease fittings packed in transparent box. Includes 30 straight, 10 @ 45° angle and 10 @ 90° angle.

11-954 1 per master.

Deluxe Fitting Assortment - 100 Piece

1/8" and 1/4" grease fittings packed in transparent box. 1/8" fittings include 30 straight, 2 @ 30° angle, 5 @ 45° angle, 5 @ 65° angle and 3 @ 90° angle. 1/4" fittings include 40 straight, 10 @ 45° angle and 5 @ 90° angle.

11-953 1 per master.

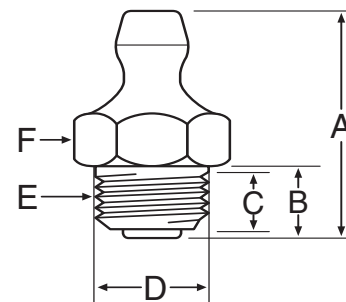
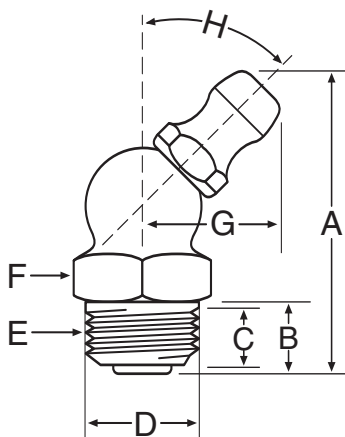
Deluxe Fitting Assortment - 50 Piece

1/4" - 28 grease fittings packed in transparent box. Includes 30 straight, 10 @ 45° angle and 10 @ 90° angle.

11-951 1 per master.

5-Pack	10-Pack	Box 50	Box 100	Box 1000	Description	A	B	C	D	E	F	G	H
SAE FITTINGS													
-	11-151	-	11-150	-	1/8" NPT Straight, Short	11/16	9/32	3/16	13/32	1/8 PT	7/16		
11-159	-	-	11-218	-	1/8" NPT 45° Angle	7/8	19/64	7/32	13/32	1/8 PT	7/16	27/64	45°
11-167	-	11-166	-	-	1/8" NPT 90° Angle	27/32	19/64	7/32	13/32	1/8 PT	7/16	1/2	90°
11-201	-	-	11-226	-	1/4" NPT Straight	7/8	13/32	9/32	17/32	1/4 PT	9/16		
-	11-101	-	11-100	11-103	1/4"-28 Straight, Short	35/64	13/64	7/64	1/4	1/4-28	5/16		
-	11-105	-	11-104	-	1/4"-28 45° Angle	53/64	13/64	5/32	1/4	1/4-28	3/8	13/32	45°
-	-	-	-	11-126	1/4"-28 65° Angle	3/4	5/16	13/64	17/64	1/4-28	3/8	23/32	65°
-	11-113	11-112	-	-	1/4"-28 90° Angle	49/64	13/64	5/32	1/4	1/4-28	3/8	1/2	90°
METRIC FITTINGS													
11-301	-	-	-	-	6 mm - 1.0 Metric Straight	19/32	1/4	3/32	15/64	6mm-1P	7 mm		
11-303	-	-	-	-	6 mm - 1.0 Metric 45° Angle	13/16	7/32	1/8	15/64	6mm-1P	10 mm	27/64	45°
11-305	-	-	-	-	6 mm - 1.0 Metric 90° Angle	3/4	7/32	1/8	15/64	6mm-1P	10 mm	1/2	90°
11-311	-	-	-	-	8 mm - 1.0 Metric Straight	5/8	1/4	3/32	5/16	8mm-1P	9 mm		
11-313	-	-	-	-	8 mm - 1.0 Metric 45° Angle	13/16	7/32	1/8	5/16	8mm-1P	10 mm	25/64	45°
11-315F	-	-	-	-	8 mm - 1.0 Metric 90° Angle	3/4	7/32	1/8	5/16	8mm-1P	10 mm	1/2	90°
11-321	-	-	-	-	10 mm - 1.0 Metric Straight	5/8	1/4	3/32	25/64	10mm-1P	11 mm		
11-323	-	-	-	-	10 mm - 1.0 Metric 45° Angle	13/16	7/32	1/8	25/64	10mm-1P	11 mm	7/16	45°
11-325	-	-	-	-	10 mm - 1.0 Metric 90° Angle	3/4	7/32	1/8	25/64	10mm-1P	11 mm	1/2	90°
THREAD FORMING FITTINGS													
-	-	-	-	11-427	1/8" Pipe Spec. Taper Drive Thread	5/8	15/64	5/32	13/32	1/8 PT	7/16		
-	-	-	-	11-432	1/4-28 Spec. Taper Drive Thread	17/32	13/64	1/8	1/4	1/4-28	5/16		
-	-	-	-	11-435	1/4-28 Pipe Spec. Taper Drive Thread 45°	13/16	13/64	11/64	1/4	1/4-28	3/8	13/32	45°
DRIVE FITTINGS													
-	-	-	-	11-448	1/4" Straight Drive	9/16	1/4	-	1/4	-	11/32		
-	-	-	-	11-445	3/16" Straight Drive, NBC	31/64	7/32	-	3/16	-	9/32		

(NBC= No Ball Check)





11315
11315CC

11300

11316

11302



11380
11380CC

11382

11465



11751

11750

11752

11749



11357

11358
11358CC

11363

11350
11350CC

11354

Multi-Purpose Lithium Grease

Long lasting, hard working formula delivers high performance in wide range of heavy-duty applications. Recommended for chassis, universal joints and other general purpose applications around the home, farm or shop. Works best for lubricating rolling parts. NLGI #1-1/2, drop point 350°F.

- 11302 2-pack of 3 oz. cartridges. 12 per master.
- 11300 4-pack of 3 oz. refills. 12 per master.
- 11315 14 oz. cartridge. 10 per master.
- 11315CC Same as 11315. Case-cut box. 10 per master.
- 11316 16 oz. (1 lb.) can. 12 per master.
- 11328 (not shown) 35 lb. drum.
- 11330 (not shown) 120 lb. drum.
- 11332 (not shown) 400 lb. drum.

Disc/Drum Brake Wheel Bearing Grease

Meets high temperature requirements of all disc and drum brakes and similar applications. Meets Ford specification MIC 198-A. Polyurea base. Rated GC-LB by NLGI. NLGI #2, drop point 520°F.

- 11465 14 oz. cartridge. 10 per master.
- 11380 16 oz. (1 lb.) can. 12 per master.
- 11380CC Same as 11380. Case-cut box. 12 per master.
- 11382 4 lb. tub w/ easy-to-carry handle. 6 per master.
- 11384 (not shown) 35 lb. drum.
- 11385 (not shown) 120 lb. drum.
- 11386 (not shown) 400 lb. drum.

Synthetic Brake Caliper Grease

Our Synthetic Brake Caliper Grease is a 100% synthetic lithium complex lubricant. It delivers excellent performance in both high and low temperature applications. It meets or exceeds Ford ESA-M1c75B and GM 9985254. Rated GC-LB by NLGI. NLGI #2, drop point 500°F.

- 11749 2-pack of 4.75g packets. 5 per master.
- 11750 8 oz. tube. 12 per master.
- 11751 14 oz. cartridge. 10 per master.
- 11752 16 oz. (1 lb.) can. 12 per master.

White Lithium Grease

Includes zinc additive for a clean, white color. Ideal for general home, shop, automotive, agricultural and industrial applications. Contains no silicons and can be used on plastic components. NLGI #2, drop point 393°F.

- 11358 2-pack of 3 oz. cartridges. 12 per master.
- 11358CC Same as 11358. Case-cut box. 12 per master.
- 11357 4-pack of 3 oz. cartridges. 12 per master.
- 11363 12 oz. spray can with Teflon® additive. 12 per master.
- 11354 14 oz. cartridge. 10 per master.
- 11350 16 oz. (1 lb.) can. 12 per master.
- 11350CC Same as 11350. Case-cut box. 12 per master.
- 11355 (not shown) 35 lb. drum.
- 11356 (not shown) 120 lb. drum.

Moly EP Grease

Addition of molybdenum disulfide to lithium-based grease makes this lubricant especially effective for sliding motions, such as sleeve-journal rotating shafts and ball joints. Contains extreme pressure (EP) additives to reduce scuffing, scoring and seizure with high loads. NLGI #1-1/2, drop point 360°F.

- 11335** 14 oz. cartridge. 10 per master.
- 11336** 16 oz. (1 lb.) can. 12 per master.
- 11337** 2-pack of 3 oz. cartridges. 12 per master.
- 11338** 4 lb. tub with easy-to-carry handle. 6 per master.
- 11340** (not shown) 35 lb. drum.
- 11342** (not shown) 120 lb. drum.
- 11345** (not shown) 400 lb. drum.

Marine Trailer Wheel Bearing Grease

Special calcium sulfonate complex, water insoluble formula ideal for marine applications. Provides excellent corrosion protection under severe conditions caused by salt water and air. Use on wheel bearings (including disc brake wheel bearings), swivel hinges, pins, winches and anchor chain reels. Rated GC-LB by NLGI. NLGI #2, drop point 550°F.

- 11399** 2-pack of 3 oz. cartridges. 12 per master.
- 11400** 4-pack of 3 oz. cartridges. 12 per master.
- 11405** 10 oz. tube. Use with Jiffy Luber® 30-195 or Pistol Luber® 30-197. 12 per master.
- 11401** Corrosion Pro 11 oz. spray can. 12 per master.
- 11402** 14 oz. cartridge. 10 per master.
- 11402CC** Same as 11402. Case-cut box. 10 per master.
- 11404** 16 oz. (1 lb.) can. 12 per master.
- 11407** (not shown) 35 lb. drum.
- 11408** (not shown) 120 lb. drum.
- 11409** (not shown) 400 lb. drum.

LMX® The "Red" Grease

Industrial and agricultural lithium complex formula. Ideal under temperature and pressure extremes, shock loads and high wear situations. Superior adhesion to bearing and moving parts. Highly water insoluble. Rated GC-LB by NLGI. NLGI #2, drop point 510°F.

- 11389** 16 oz. (1 lb.) can. 12 per master.
- 11390** 14 oz. cartridge. 10 per master.
- 11391** (not shown) 35 lb. drum.
- 11392** (not shown) 120 lb. drum.
- 11393** (not shown) 400 lb. drum.

Lawn & Garden Grease

Our complete lawn and garden lubricant line will work to keep mowers, trimmers, tillers, chain saws, pruners, weed eaters and other yard equipment in top condition through years of hard use.

Heavy-Duty Multi-Purpose Lithium (NLGI #1-1/2, drop point 350°F)

- 11306** 2-pack of 3 oz. cartridges. 12 per master.

White Lithium (NLGI #2, drop point 393°F)

- 11359** 2-pack of 3 oz. cartridges. 12 per master.
- 11487** 8 oz. tube. Use with Jiffy Luber 30-195 or Pistol Luber 30-197. 12 per master.
- 11487CC** Same as 11487. Case-cut box. 12 per master.
- 11360** 16 oz. (1 lb.) can. 12 per master.





11745

5th Wheel Trailer Grease

Our 5th Wheel Trailer Grease is designed for fifth wheel and other extreme load applications. It's formulated for anti-wear and severe shock load protection. This trailer grease resists water washout and stays in lubrication contact points. NLGI #2, drop point 360°F.

11745 100 - 2 oz. bags shipped in pop-up display.

11746 14 oz. cartridge. 10 per master.

Red Lithium Complex Power Equipment Grease

Our Red Lithium Complex Power Equipment Grease ensures maximum retention at high temperatures. It has special additives for high film strength, extreme pressure and antiwear, as well as excellent oxidation and corrosion inhibitors. Rated GC-LB by NLGI. NLGI #2, drop point 500°F.

11740 14 oz. cartridge. 10 per master.

11741 (not shown) 35 lb. drum.

Hi-Temp Food Machinery Grease

Our Hi-Temp Food Machinery Grease is a USDA H-1 authorized aluminum complex thickened lubricator. It provides excellent extreme pressure and antiwear protection, and can be used over a wide range of operating temperatures. NLGI #2, drop point 500°F.

11730 14 oz. cartridge. 10 per master.

11731 (not shown) 35 lb. drum.

11732 (not shown) 120 lb. drum.

11733 (not shown) 400 lb. drum.

Synthetic Food Machinery Grease

Our Synthetic Food Machinery Grease is formulated with the highest quality synthetic USDA H-1 authorized materials. It delivers excellent performance in both high and low temperature applications. NLGI #2, drop point 650°F.

11735 14 oz. cartridge. 10 per master.

11736 (not shown) 35 lb. drum.

11737 (not shown) 120 lb. drum.

11738 (not shown) 400 lb. drum.

Specialty Greases

Electrical Contact Grease

Protects electrical connections from corrosion. Water-resistant formulation sheds moisture and doesn't wash away.

NLGI #2, drop point 550°F.

11755 2 oz. tube. 12 per master.

Trailer Hitch Grease

For use on trailer hitch ball and coupling. Contains rust and oxidation inhibitors and PTFE for added friction reduction. Water washout resistant. Tubes can stand alone or be pegged.

11748 2 oz. tube. Case-cut box. 12 per master.



11746



11740



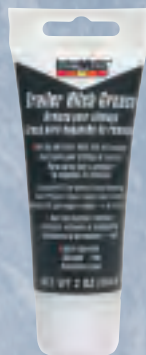
11730



11735



11755



11748

Specialty Greases (cont'd)

UltraLube® Multi-Purpose Lithium Grease

Special economy blend for general purpose use. NLGI #1-1/2, drop point 325°F.

11310 14 oz. cartridge. 10 per master.

11309 16 oz. (1 lb) can. 12 per master.

Motor Assembly White Grease

A quality white lithium grease with exceptional consistency. Perfect for all engine rebuilding, metal-to-metal and electrical connection applications. NLGI #1, drop point 393°F.

11395 10 oz. tube. 12 per master.

CV Joint Grease

Lithium based grease with 3% Moly for extra protection. For use when repairing and replacing joints and/or protective boots. NLGI #1-1/2, drop point 400° F.

11396 3 oz. tube. 12 per master.

Snowmobile Grease

This low temperature lithium grease is the ideal lubricant for all snowmobile and cold weather equipment applications. It performs and remains pumpable down to -40°F. NLGI #1, drop point 365°F.

11461 14 oz. cartridge. 10 per master.

Open Gear & Wire Rope Spray Lube

Reduces wear, withstands extreme pressure. Will not wash or weather away.

11473 11-1/4 oz. spray can. 12 per master.

Chain & Cable Lubricant

Graphite molybdenum formula reduces wear and increases chain life.

11474 12 oz. spray can. 12 per master.

Household Grease

Garage Door Lubricant

White lithium base protects and clings to rollers and rails.

11472 12-3/4 oz. spray can. 12 per master.

Garage Door Opener Grease

White lithium grease clings to rollers, rails and screw-type mechanisms.

11484 8 oz. tube. 12 per master.



11309



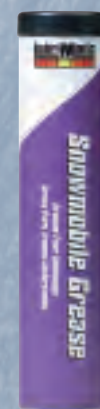
11310



11395



11396



11461



11473



11474



11472



11484



11593

11591

11592
11592MP

11590
11590MP



11601

11566



11463

11462



11785

11784

11788

11787

TC-W3® 2-Cycle Oil

TC-W3 meets the specified requirements of all foreign and domestic 2-cycle outboard manufacturers. Our ashless TC-W3 is formulated from ultra-clean base stock oil to provide superior protection against piston scuffing, bearing wear, spark plug fouling, pre-ignition and rust. This formulation has outstanding lubricity and miscibility for better mixing of fuel and oil, resulting in a cleaner running engine. Contains no phosphorus. Will not void manufacturers' warranties!

TC-W3 Outboard Motor Oil

- 11590** 16 oz. bottle. 12 per master.
- 11590MP** Mini-pallet. 192 pints.
- 11591** Quart bottle. 12 per master.
- 11592** Gallon container. 6 per master.
- 11592MP** Mini-pallet. 24 gallons.
- 11593** 2-1/2 gallon container. 2 per master.
- 11594** (not shown) 55 gallon drum. 1 per master.

100% Synthetic TC-W3 Motor Oil

Exceeds all NMMA TC-W3 standards. 100% synthetic formulation helps improve engine performance, reducing friction and wear and smoke emissions. Ideal for fuel injected and high HP engines.

- 11601** Gallon container. 6 per master.

Personal Watercraft Oil

An ashless TC-W3 oil, which has been packaged specifically to appeal to this rapidly growing market. Packaging directed to the personal watercraft owner is important because a higher percent of personal watercraft (PWC) owners do not own boats, but cross over directly from motorcycle and snowmobile enthusiast markets. For all PWC applications requiring a TC-W3 oil.

- 11566** Gallon container. 6 per master.

Snowmobile Oil

Formulated for use in snowmobiles and other oil-injection cold-weather equipment requiring ashless TC-W3 oil. Exceeds Category IV low temperature performance requirements (-40°F).

- 11462** 2-Cycle quart bottle. 12 per master.
- 11463** 2-Cycle gallon container. 6 per master.

4-Stroke Heavy Duty Diesel Marine Oil

LubriMatic® 15w/40 and HD40 Heavy Duty Marine Diesel Engine Oils are premium quality oils for hard working marine engines. Specially formulated for today's high performance, fuel efficient, low emission diesel engines, these oils neutralize corrosive acids, providing maximum protection under severe conditions created by high sulfur fuels. Suitable for use in Chrysler, Ford, GM, Detroit Diesel and Daimler-Benz engines, Heavy Duty Marine Diesel Oils meet or exceed all performance requirements. Also meets or exceeds API-SJ/CH-4/CG-4/CF-4/CF-2/CF/CE specifications.

- 11784** 15w/40 quart bottle. 12 per master.
- 11785** 15w/40 gallon container. 6 per master.
- 11786** (not shown) 15w/40 55 gallon drum. 1 per master.
- 11787** HD40 quart bottle. 12 per master.
- 11788** HD40 gallon container. 6 per master.
- 11789** (not shown) HD40 55 gallon drum. 1 per master.

4-Stroke Marine Oil

Specially blended to meet the specific requirements of 4-stroke marine engines. Fortified with tough, high performance detergents and antiwear additives to keep your engine clean for more efficient, longer lasting performance. Meets or exceeds quality performance of API-SJ specifications and will not void manufacturers' warranties.

- 11790** 10w/30 quart bottle. 12 per master.
- 11792** 10w/30 gallon container. 6 per master.
- 11793** (not shown) 10w/30 55 gallon drum. 1 per master.
- 11791** HD30 quart bottle. 12 per master.
- 11794** HD30 gallon container. 6 per master.
- 11795** (not shown) HD30 55 gallon drum. 1 per master.

4-Stroke Outboard Motor Oil

Specially blended to meet the requirements of today's 4-stroke outboard engines. Excellent engine wear protection, from extended trolling to extended wide-open throttle operation. Meets or exceeds quality performance JASO 4T and API SJ specifications.

- 11797** Quart bottle. 12 per master.

4-Stroke Motorcycle Oil

Specially blended to meet the specific requirements of 4-stroke motorcycle engines. Designed to protect the engine, transmission and wet clutch, our 10w/40 oil is recommended for all standard engines, while our 20w/50 oil is recommended for all high performance and racing engines. Meets or exceeds quality performance of JASO-MA and API-SG specifications and will not void manufacturers' warranties.

- 11770** 10w/40 quart bottle. 12 per master.
- 11771** 10w/40 gallon container. 6 per master.
- 11772** (not shown) 10w/40 55 gallon drum. 1 per master.
- 11774** 20w/50 quart bottle. 12 per master.
- 11775** 20w/50 gallon container. 6 per master.
- 11776** (not shown) 20w/50 55 gallon drum. 1 per master.

4-Stroke ATV Engine Oil

Specially blended to meet the specific requirements of 4-stroke ATV engines. Fortified with tough, high performance detergents and antiwear additives, this hard working oil provides superior lubrication and protection designed to protect the engine, transmission and wet clutch. Recommended for all recreational and racing 4-stroke engines. Meets or exceeds quality performance of JASO-MA and API-SG specifications and will not void manufacturers' warranties.

- 11780** 10w/40 quart bottle. 12 per master.
- 11781** 10w/40 gallon container. 6 per master.
- 11782** (not shown) 10w/40 55 gallon drum. 1 per master.



11792

11794

11790

11791



11797



11771

11775

11770

11774



11781

11780



11524

11525

11527



11488

11531



11532

11555



11555CC



11558

2-Cycle Oil

E-Z 2-Cycle Oil

No guessing with this handy oil. One bottle treats one gallon of gas, works in any ratio from 16:1 to 50:1.

11524 3.2 oz. bottle. 48 per master.

2-Cycle Engine Oil

Formulated to improve performance, extend engine life and reduce plug fouling. Provides excellent wear protection and high temperature performance. Recommended for chain saws, trimmers, motorcycles, snow blowers, mowers and other air cooled 2-cycle engines. Meets performance level of API-TC specifications.

11525 8 oz. bottle. 24 per master.

11527 Quart bottle. 12 per master.

Lawn & Garden Oil

Fogging Oil

Protects internal components of 2- and 4-cycle engines from rust, corrosion or seizing during seasonal storage.

11488 9-3/4 oz. spray can. 12 per master.

Power Lawn Mower 4-Cycle Oil

Perfect for any 4-cycle air cooled engine such as those in lawn mowers, tillers, garden tractors and snow throwers. SAE30.

11531 20 oz. bottle. 12 per master.

Chain Saw Bar and Chain Oil

Formulated to extend chain, bar and sprocket life. Protects against rust and corrosion with minimum "throw off" at high chain speeds. Resists thinning and freezing caused by temperature extremes.

11532 Quart bottle. 12 per master.

E-Z 2-Cycle Oil

No guessing with this handy oil. One bottle treats one gallon of gas, works in any ratio from 16:1 to 50:1.

11555 3.2 oz. bottle. 48 per master.

11555CC Same as 11555. Case-cut box. 24 bottles per display.

2-Cycle Engine Oil

Formulated to improve performance, extend engine life and reduce plug fouling. Provides excellent wear protection and high temperature performance. Recommended for chain saws, trimmers, motorcycles, snow blowers, mowers and other air cooled 2-cycle engines. Meets performance level of API-TC specifications.

11558 8 oz. bottle. 24 per master.

Marine Lower Unit Gear Lube

Power Pro 80w/90 Gear Lube

A synthetic blend gear lube that protects high-performance lower units in extreme operating conditions. Highly recommended for all engines over 100 hp. Meets or exceeds API MT-1 and GL-5 ratings. Will not void manufacturers' warranties.

- 11563** 10 oz. tube. 12 per master.
- 11564** Quart bottle. 12 per master.
- 11565** (not shown) 5 gallon drum.
- 11567** (not shown) 55 gallon drum.

High-Viscosity 80w/90 Gear Lube

Ideal for modern outboard and stern drive lower units. Meets or exceeds API-MT-1 and GL-5 ratings. Will not void manufacturers' warranties.

- 11540** 10 oz. tube. 12 per master.
- 11552** Quart bottle. 12 per master.
- 11546** (not shown) 5 gallon drum.
- 11547** (not shown) 120 lb. drum.
- 11562** (not shown) 55 gallon drum.

Premium Type C Lube

Particularly recommended for electric shift gear cases used on Johnson and Evinrude outboards from 1962 – 1972, OMC stern drives 1977 and earlier, and other Type C applications. Will not void manufacturers' warranties.

- 11542** 10 oz. tube. 12 per master.
- 11554** Quart bottle. 12 per master.
- 11548** (not shown) 5 gallon drum.
- 11549** (not shown) 120 lb. drum.

Hypoid 90 Gear Lube

For mechanical shift outboards and stern drives. Meets U.S. Military Spec MIL-L-2105D and API MT-1 and GL-5 ratings. Will not void manufacturers' warranties.

- 11544** 10 oz. tube. 12 per master.
- 11556** Quart bottle. 12 per master.
- 11550** (not shown) 5 gallon drum.
- 11557** (not shown) 120 lb. drum.

Power Trim and Tilt Fluid

Formulated to provide viscosity and lubricity necessary to ensure proper pump performance and seal life. Combats high operating pressures and resists rust. Anti-foam and extreme pressure additives ensure excellent stability and shear resistance.

- 11578** 10 oz. tube. 12 per master.
- 11560** (not shown) 55 gallon drum.

Lower Unit Lube Kit

Includes 1 quart of High-Viscosity Lower Unit Gear Lube (11552), Lower Unit Quart Pump (55-007), with 3/8"-16 Filler Fitting for Mercury, Mercruiser, OMC, Evinrude, Johnson, Volvo, Force, Gamefisher, and Honda (70 hp and up) outboard engines.

- 11246** Clamshell. 6 per master.

Marine Lower Unit Fill Kit

Kit includes two 10 oz. tubes of 11540 High-Viscosity Lower Unit Gear Lube and filler tube for Mercruiser, OMC, Evinrude, Johnson, Volvo, Force and Gamefisher models. Fill adapters for other engines available (see 55-012 and 55-013, page 7).

- 11101** 6 per master.



11563 11564



11540 11552



11542 11554



11544 11556



11578



11246



11101



11278



11279



11507



11505



11509



11505



11492



11491



11494



11493

Marine Engine Prep Kits

Spring Prep Kit

Everything a boater needs to get the boat in the water after winter storage. Includes 6 quart Plastic Drain Pan (75-760), Lower Unit Quart Pump with Fitting (55-007), 1 quart Hi-Viscosity Lower Unit Gear Lube (11552), two 3 oz. cartridges Marine Trailer Bearing Grease (11399), 1 pint LubriMatic® TC-W3® (11590), and 8 oz. Funnel (75-060).
11278 Shrink wrapped. 5 per master.

Fall Prep Kit

Everything a boater needs to prepare a boat for winter storage. Includes 6 quart Plastic Drain Pan (75-760), Lower Unit Quart Pump with Fitting (55-007), 1 quart Hi-Viscosity Lower Unit Gear Lube (11552), two 3 oz. cartridges Marine Trailer Bearing Grease (11399), 4 oz. Gas Stabilizer (11630), Fogging Oil 12 oz. Spray (11412), and Corrosion Pro 11 oz. Spray (11401).
11279 Shrink wrapped. 5 per master.

Gear Lube

SAE 80w/90 EP

Premium blend contains extreme pressure additives to provide heavy-duty protection. Outstanding for use in garden tillers and other equipment. Recommended for automotive, tractor, truck and industrial applications such as manual transmissions, differentials or other gear boxes which require heavy-duty multi-purpose lubricant. Meets API MT-1, GL-5, MIL-L-2105E, and Mack GO-G/H/I specifications.

11500 Quart bottle with spout cap. 12 per master.

11507 Gallon container. 6 per master.

11510 (not shown) 5 gallon drum.

11517 (not shown) 120 lb. drum

11521 (not shown) 400 lb. drum

SAE 85w/140 EP

Formulated with EP additives to exceed most extreme performance requirements. Withstands severe shock, high torque loads and wide temperature variations. Meets API MT-1, GL-5, MIL-L-2105E, and Mack GO-G/H/I specifications.

11505 Quart bottle with spout cap. 12 per master.

11509 Gallon container. 6 per master.

11515 (not shown) 5 gallon drum.

11519 (not shown) 120 lb. drum.

11522 (not shown) 400 lb. drum.

GL4 Gear Lube

Designed to meet the requirements of API Service GL4 for gears in non-critical automotive type equipment operated under high speed/low torque and low speed/high torque conditions.

11491 Quart bottle. 12 per master. SAE 140 EP.

11492 Gallon container. 6 per master. SAE 140 EP.

11493 Quart bottle. 12 per master. SAE 85w/90 EP.

11494 Gallon container. 6 per master. SAE 85w/90 EP.

GL5 Limited Slip Gear Lube

Meets the requirements of API Service GL5/MT-1. Provides excellent extreme pressure and anti-wear properties. Protects against oxidation, rust, corrosion and foaming.

- 11501** Quart bottle. 12 per master. SAE 85w/140 HP.
- 11502** Gallon container. 6 per master. SAE 85w/140 HP.
- 11503** Quart bottle. 12 per master. SAE 75w/90 HP.
- 11495** Quart bottle. 12 per master. SAE 80w/90 HP.
- 11496** Gallon container. 6 per master. SAE 80w/90 HP.

Limited Slip Additive

Designed for use in positraction and limited slip differentials. Eliminates and prevents chatter, jerking and excessive wheel spinning.

- 11536** 4 oz. bottle. 48 per master.

Synthetic Gear Lube

Formulated to provide maximum durability and thermal protection in differentials, manual transmissions and transfer cases. Protects against oxidation, rust, corrosion and foaming.

- 11497** Quart bottle. 12 per master. SAE 75w/90.
- 11498** Quart bottle. 12 per master. SAE 75w/140.
- 11499** 2 Quart bottle. 12 per master. SAE 75w/140, OEM Grade.

Specialty Oils

Bar & Chain Oil

Formulated to extend chain, bar and sprocket life. Protects against rust and corrosion with minimum "throw off" at high chain speeds. Resists thinning and freezing caused by temperature extremes.

- 11535** Gallon container. 6 per master.

Silicone Lubricant

- 11470** 9-3/4 oz. spray can.

Belt Dressing

- 11471** 11 oz. spray can. 12 per master.

Fogging Oil

Protects internal components of 2- and 4-cycle engines from rust, corrosion or seizing during seasonal storage.

- 11412** 12 oz. spray can. 12 per master.



11501 11502 11503 11495 11496



11497 11498 11499



11536 11535



11470 11471 11412



11715

11716



11718



11610



11621



11723

Air Tool Oil

Our Air Tool Oil is specifically formulated to keep pneumatic tools and equipment operating longer with greater power and less downtime. It provides protection from rust, oxidation, extreme pressure and moisture.

11715 4 oz. bottle. 12 per master.

11716 8 oz. bottle. 12 per master.

11718 1 gallon container. 6 per master.

Hydraulic Oils

Hydraulic Jack Oil

For all standard and bottle jacks. ISO 22.

11610 16 oz. bottle. 12 per master.

11621 5 gallon container.

Hydraulic Oil

Specially formulated to handle high pressure, heavily loaded systems. Fully inhibited with anti-oxidation, anti-rust and anti-foam additives. Meets Denison, Vickers, Cincinnati Milacron and other pump standards.

Specifications	ISO 32	ISO 46	ISO 68
API gravity	32	31.5	31.5
Flash, COC	400°F	415°F	430°F
Pour point	-25°F	-20°F	-20°F

11723 ISO 32. 5 gallon container.

11725 ISO 46 (not shown). 5 gallon container.

11727 ISO 68 (not shown). 5 gallon container.

Cutting Oil

CT-250-NC Cutting Oil is a chlorine-free, water emulsifiable cutting and grinding fluid particularly suited to difficult machining and grinding. Extreme pressure additives provide extended tool life and finishes comparable to straight cutting oils. Specific gravity (60°F) 0.930; flash point 350°F; pour point -10°F.

11720 ISO 46 Cutting Oil. 5 gallon container.

Gas Stabilizer

Before off-season storage, pour Gas Stabilizer in any 2- or 4-cycle engine. Keeps fuel fresh up to 12 months. Container design makes measuring easy. One ounce treats 2.5 gallons.

11630 4 oz. bottle. Treats 10 gallons. 12 per master.

11631 8 oz. bottle. Treats 20 gallons. 12 per master.

11632 16 oz. bottle. Treats 40 gallons. 12 per master.

Compressor Oil

Provides anti-wear and rust protection. Reduces deposits and inhibits oxidation.

11700 Quart bottle. 12 per master.

11701 Gallon container. 6 per master.



11720



11630



11631



11632



11701



11700

Quick Reference Grease Chart

This chart indicates general specifications and applications of all greases available from Plews/LubriMatic™. Please contact our customer service department or representative for further details.

LubriMatic Grease	Grade	Drop Point	Water Washout	4 Ball Weld (kgf)	4 Ball Scar (mm)	Timken OK Load	Base (Soap/Thickener)	Texture	Color
CV Joint Grease	2	570° F	Excellent	250	0.53	40	Polyurea	Smooth	Aqua Blue
Disc/Drum Wheel Bearing Grease	2	520° F	Excellent	500	0.51	60	Polyurea	Smooth	Aqua
Electrical Contact Grease	2	550° F	Outstanding	500	0.39	65	Calcium Sulfonate	Smooth	Tan
5th Wheel Trailer Grease	2	360° F	Excellent	N/A	N/A	N/A	Lithium/Calcium	Smooth	Black
Hi-Temp Food Machinery Grease	2	500° F	Excellent	N/A	0.60	40	Aluminum Complex	Smooth	White
LMX® "Red" Grease	2	510° F	Excellent	315	0.50	45	Lithium Complex	Tacky	Red
Marine Trailer Bearing Grease	2	550° F	Outstanding	620	0.45	55	Calcium Sul. Complex	Smooth	Aqua Green
Moly EP Grease	1.5	360° F	Excellent	250	0.41	30	Lithium 12-Hyd. Stearate	Smooth	Gray
Motor Assembly White Grease	1	393° F	Good	250	0.53	N/A	Lithium 12-Hyd. Stearate	Smooth	Off White
Multi-Purpose Lithium Grease	1.5	350° F	Very Good	N/A	N/A	N/A	Lithium 12-Hyd. Stearate	Smooth	Gray-Black
Red Power Equipment Grease	2	500° F	Excellent	250	0.60	50	Lithium Complex	Tacky	Red
Snowmobile Grease	1	365° F	Very Good	250	0.50	40	Lithium 12-Hyd. Stearate	Smooth	Dark Amber
Synthetic Brake Caliper Grease	2	500° F	Excellent	315	0.60	55	Lithium Complex	Smooth	Light Blue
Synthetic Food Machinery Grease	2	650° F	Excellent	N/A	0.50	N/A	Silica	Smooth	Clear
White Lithium Grease	2	393° F	Very Good	N/A	N/A	N/A	Lithium 12-Hyd. Stearate	Smooth	Ivory

Grease Compatibility Chart

It is important to determine compatibility prior to mixing greases of different base types. Incompatible greases can cause adverse chemical reactions, resulting in rust, pitting, scoring of metal, and breakdown of the grease's ability to lubricate.

Thickener or Soap Type	Aluminum Complex	Barium Complex	Calcium Stearate	Calcium 12-Hydroxy	Calcium Complex	Calcium Sulfonate Complex	Clay (non-soap)	Lithium Stearate	Lithium 12-Hydroxy	Lithium Complex	Polyurea (conven. 1st gen.)	Polyurea (LUB - L/M type)
Aluminum Complex	-	I	I	C	I	N	I	I	I	C	I	C
Barium Complex	I	-	I	C	I	C	I	I	I	I	I	N
Calcium Stearate	I	I	-	C	I	C	C	C	N	C	I	C
Calcium 12-Hydroxy	C	C	C	-	N	N	C	C	C	C	I	C
Calcium Complex	I	I	I	N	-	I	I	I	I	C	C	C
Calcium Sulfonate Complex	N	C	C	N	I	-	I	N	N	C	I	C
Clay (non-soap)	I	I	C	C	I	I	-	I	I	I	I	N
Lithium Stearate	I	I	C	C	I	N	I	-	C	C	I	C
Lithium 12-Hydroxy	I	I	N	C	I	N	I	C	-	C	I	C
Lithium Complex	C	I	C	C	C	C	I	C	C	-	I	C
Polyurea (conven. 1st gen.)	I	I	I	I	C	I	I	I	I	I	-	C
Polyurea (LUB - L/M type)	C	N	C	C	C	C	N	C	C	C	C	-

Relative Compatibility Rating

- C** = Compatible
- N** = Not Recommended
- I** = Incompatible

Tomkins

Industrial and Automotive

Amflo®

 **Camel**®

EDELMANN®

IDEAL™

PLEWS™
lubriMatic


SCHRADERBRIDGEPORT®

Stant®

TRICO®

TRIDON▶®

TRU-FLATE®

Amflo:

Air Line Accessories
Pneumatic Hoses

Camel:

Tire Hardware
Tire Repair
Tire Gauges

Edelmann:

Power Steering Hose Assemblies
Automotive Fittings
Brake Lines
Transmission Oil Cooler Lines & Fittings

Ideal:

Hose Clamps

Plews/LubriMatic:

Oils, Greases & Spray Lubricants
Lubrication Equipment

Schrader:

Tire Valves (Passenger & Truck)

Stant:

Fuel, Radiator & Oil Filler Caps
Thermostats
Heater Cores & Heater Parts
Cooling & Fuel Cap Testers

Trico:

Windshield Wiper Products

Tridon:

Windshield Wiper Products
Hose Clamps
Flashers

Tru-Flate:

Air Line Accessories
Tire Gauges & Hardware



Telephone(800) 770-4639

Fax.....(815) 288-3388

Website URL.....www.plews-edelmann.com

Route 38, Airport Industrial Park
Dixon, IL 61021